



COUNTY OF LOS ANGELES

REGISTRAR-RECORDER/COUNTY CLERK

12400 IMPERIAL HWY. – P.O. BOX 1024, NORWALK, CALIFORNIA 90651-1024/(562) 462-2716

August 6, 2004

TO: EACH SUPERVISOR

FROM: Conny B. McCormack, Registrar-Recorder/County Clerk

TOUCHSCREEN EARLY VOTING LOCATIONS FINALIZED FOR NOVEMBER 2, 2004 ELECTION

Working in partnership with your offices, the seventeen (17) Early Voting Sites for Touchscreen voting have been selected for the 2004 November Presidential Election. The early voting period will begin on Wednesday, October 20, and continue through Friday, October 29, 2004. Providing Touchscreen Early Voting for the past four years has been popular with thousands of voters who have enjoyed the benefits of voting early in the language of their choice, and by those who are visually impaired.

With these seventeen sites we are providing more uniform coverage of the county as can be seen on the attached map. Each district has a minimum of three early voting locations. Each facility is large enough to serve the maximum number of voters on the busiest day during the October 2003 Statewide Special Election, our high turnout benchmark for success. All information about the sites will be printed in all sample ballot booklets and also posted to our Web page.

We placed eight of the early voting sites in County owned facilities, which are the most cost effective locations. Another eight locations are in partnership with the cities of Beverly Hills, Calabasas, Culver City, Los Angeles, Monterey Park, Pasadena, and Redondo Beach. The one privately owned location is the Braille Institute in Los Angeles which has served visually impaired voters for the last three statewide elections. Four new sites have been selected to provide better geographic coverage, higher visibility, and better access for voters than the four previously used sites they replaced. All of these locations have sufficient parking, disabled access, and are enthusiastically supported by our county partners and community organizations.

I want to thank our Community Voter Outreach Committee (CVOC) partners who brought to our attention some excellent facilities. I also want to thank your deputies for their knowledgeable assistance and valuable contact information, without which such a comprehensive location search in each district would not have been possible.

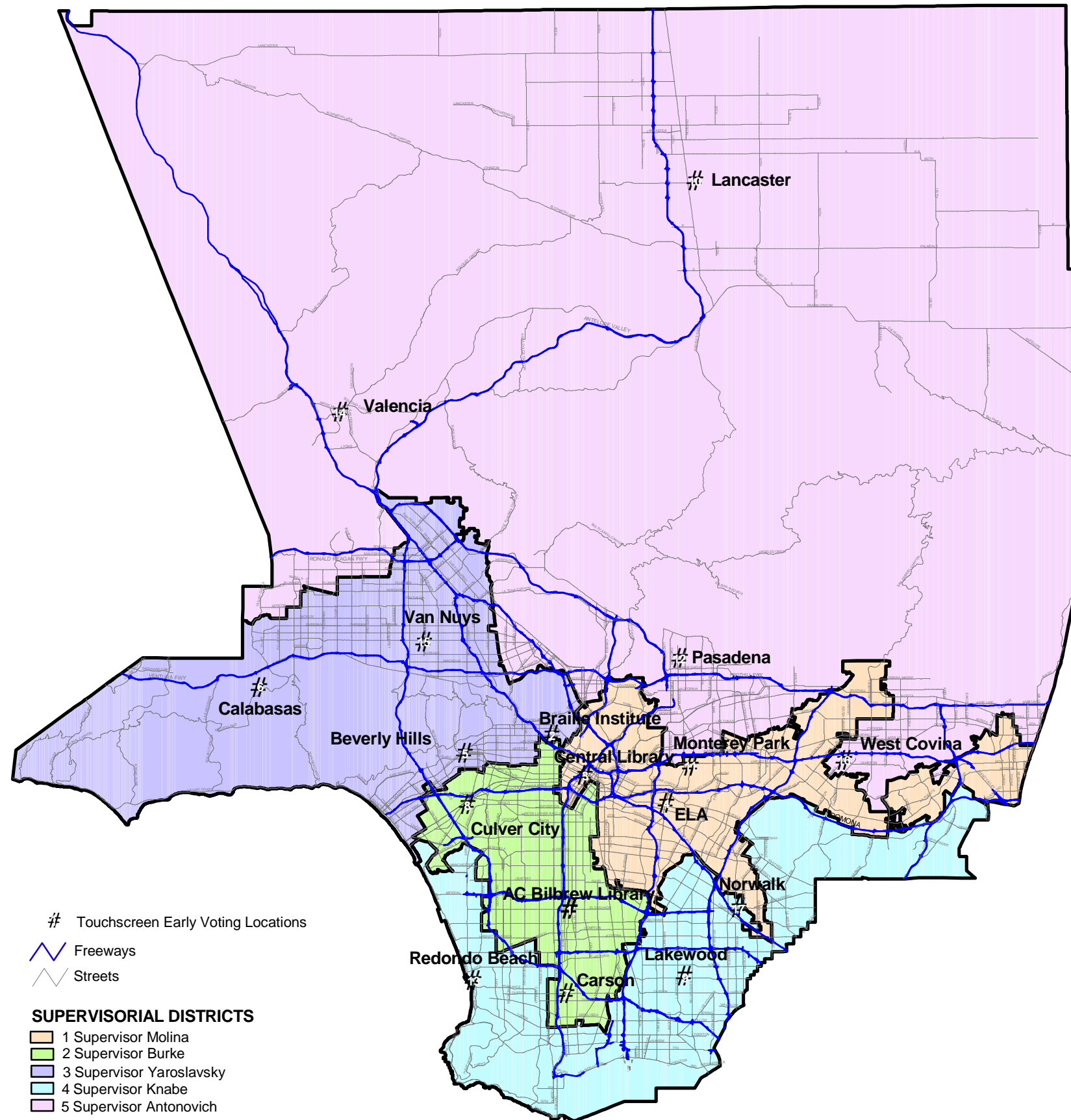
Attachment
CMC: vj

c: CAO
CVOC members

2004 PRESIDENTIAL ELECTION TOUCHSCREEN EARLY VOTING LOCATIONS October, 20 - 29, 2004

LOS ANGELES

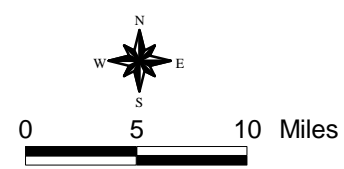
- | | |
|--|--|
| <p>1. AC BILBREW LIBRARY
150 East El Segundo Bl
Los Angeles Ca. 90061
Mon - Thurs 11am - 7pm
Fri & Sat 10am - 5pm
Sun 1pm - 4:30pm</p> <p>2. BRAILLE INSTITUTE
Weingart North
741 North Vermont Avenue
Entrance off New Hampshire
Daily 8:30am - 4:30pm</p> <p>3. CENTRAL LIBRARY
630 West 5th Street
Meeting Room A
Mon - Thurs 11am - 7pm
Fri & Sat 10am - 5pm
Sun 1pm - 4:30pm</p> <p>4. EAST LOS ANGELES
County Regional Library
4837 East 3rd Street
Mon - Thurs 11am - 7pm
Fri & Sat 10am - 5pm
Sun 1pm - 4:30pm</p> <p>5. BEVERLY HILLS
City Hall Room G30C
455 North Rexford Drive
City Parking lot across Rexford
Daily 8:30am - 4:30pm</p> <p>6. CALABASAS
Calabasas Public Library
23975 Park Sorrento
Exit 101 at Pkwy Calabasas
Mon - Thurs 11am - 7pm
Fri & Sat 10am - 5pm
Sun 1pm - 4:30pm</p> <p>7. CARSON
County Regional Library
151 East Carson
Mon - Thurs 11am - 7pm
Fri & Sat 10am - 5pm
Sun 1pm - 4:30pm</p> <p>8. CULVER CITY
City Hall
Overflow Room
9770 Culver Bl
Daily 8:30am - 4:30pm</p> | <p>9. LAKEWOOD
Angelo T. Iacoboni Library
4990 Clark Avenue
Mon - Thurs 11am - 7pm
Fri & Sat 10am - 5pm
Sun 1pm - 4:30pm</p> <p>10. LANCASTER
North County
Fire Training Center
Room 67
42110 6th Street West
Exit Hwy 14 at Av. M
Daily 8:30am - 4:30pm</p> <p>11. MONTEREY PARK
City Hall, Community Room
320 W Newmark Avenue
Daily 8:30am - 4:30pm</p> <p>12. PASADENA
Jackie Robinson Center
1020 North Fair Oaks Avenue
Daily 8:30am - 4:30pm</p> <p>13. REDONDO BEACH
Public Library
2nd Floor Conference Room
303 N. Pacific Coast Hwy
Mon - Thurs 11am - 7pm
Fri & Sat 10am - 5pm
Sun 1pm - 4:30pm</p> <p>14. VALENCIA
County Regional Library
23743 W. Valencia Blvd
Mon - Thurs 11am - 7pm
Fri & Sat 10am - 5pm
Sun 1pm - 4:30pm</p> <p>15. VAN NUYS
Marvin Braude Constituent Center
Main Floor, Meeting Room B
6262 Van Nuys Bl
Daily 8:30am - 4:30pm</p> <p>16. WEST COVINA
County Regional Library
1601 West Covina Pkwy
Mon - Thurs 11am - 7pm
Fri & Sat 10am - 5pm
Sun 1pm - 4:30pm</p> |
|--|--|
- 17. NORWALK REGISTRAR/ RECORDER-COUNTY CLERK**
3rd Floor - Room 3002
12400 Imperial Highway
October 4 through November 1
Mon - Fri 8am - 5pm
Sat & Sun 8am - 4pm
Tuesday, Nov 2nd - Election Day 7am - 8pm



Touchscreen Early Voting Locations
 Freeways
 Streets

SUPERVISORIAL DISTRICTS

- 1 Supervisor Molina
- 2 Supervisor Burke
- 3 Supervisor Yaroslavsky
- 4 Supervisor Knabe
- 5 Supervisor Antonovich



Data contained in this map is reproduced in whole or part from the Thomas Brothers Maps Digital Database. This map is copyrighted and reproduced with permission granted by Thomas Brothers Maps. All rights Reserved.