



COUNTY OF LOS ANGELES

**REGISTRAR-RECORDER/COUNTY CLERK**

12400 IMPERIAL HWY. – P.O. BOX 1024, NORWALK, CALIFORNIA 90651-1024 (562) 462-2716

**CONNOR B. McCORMACK**  
Registrar-Recorder/County Clerk

September 11, 2006

TO: EACH SUPERVISOR

FROM: Conny B. McCormack, Registrar-Recorder/County Clerk

**UPDATE ON DELIVERY OF NEW VOTING EQUIPMENT & TOUR INVITATION**

We are pleased to advise you that the delivery and acceptance testing of the new InkaVote Plus voting equipment is progressing very well. We are currently somewhat ahead of the delivery schedule established in the contract to purchase this new voting equipment.<sup>1</sup> Currently, we have received delivery and completed acceptance testing of 3,187 InkaVote Plus Precinct Ballot Readers (PBRs) and 3,074 accompanying Audio Ballot Booths (ABBs). This represents completion of delivery and acceptance testing of approximately 63% of the new voting equipment purchased to comply with the federal Help America Vote Act (HAVA). Delivery of all 4,900 PBRs and 4,900 ABBs is required, by contract, to be completed no later than September 26, 2006.

I would like to invite each of you, and your key staff, to observe the myriad steps in the acceptance testing process occurring at the new warehouse/operations center facility located less than two miles from our Norwalk headquarters. Last week Supervisor Don Knabe and members of his staff toured the facility and observed first hand the rigorous acceptance testing processes, including a demonstration of the enhanced capabilities of the new equipment. Additionally, we are in the process of compiling a ten-minute video to showcase all the processes that our staff is currently undertaking to enable the County to deploy this new equipment for the first time in every voting location during the November 7<sup>th</sup> General Election.

Voter Outreach and Education on Use of New System

Voter outreach materials have been developed to introduce the user-friendly features of InkaVote Plus to voters. Enclosed is a copy of our new brochure "*InkaVote Plus is Here to Protect Your Vote.*" We will be sending copies of this brochure to your district offices and seeking your staffs' assistance in displaying the brochures alongside the voter registration forms currently in your offices. These brochures, along with other materials including colorful posters, are also being distributed to the 100+ participant organizations that partner with us on the Community Voter Outreach Committee. We are finalizing preparations to launch a new voter education segment on our website, with pictures/video, to describe the multiple benefits of the enhanced voting system including

---

<sup>1</sup>On April 18, 2006 your Board authorized signing a contract to purchase InkaVote Plus equipment following system certification by California's Secretary of State. InkaVote Plus was certified for use in California by the Secretary of State on April 21, 2006. The contract between the County and Election Systems and Software was subsequently executed on April 25, 2006.

why the plus in InkaVote Plus, how to use the new equipment on election day, etc. The website will also include frequently asked questions (FAQs), a copy of which is enclosed with this memo.

A key benefit of InkaVote Plus is the feature that provides a “second chance” for all voters to correct an error(s) before casting the ballot. This feature alerts voters if they overvote (i.e. make more selections in a contest than allowed) and ensures each person’s votes are recorded as intended. Additionally, blind and otherwise disabled voters will have the opportunity to vote without assistance using the audio ballot with headphones at their neighborhood voting locations (both of these features fulfill HAVA requirements). For some voters, this audio component will allow the first opportunity to cast a ballot privately and independently, or to hear the ballot in their choice of language (the audio ballot will be available in Spanish, Chinese, Japanese, Korean, Tagalog and Vietnamese in addition to English).

### Pollworker Education and Training on New System

A vital component of successfully introducing new voting equipment is pollworker training. In advance of the November 7<sup>th</sup> election, 490 training classes will be conducted by our staff. Each class will include the opportunity for “hands on” experience operating the new equipment.

Prior to training, every recruited pollworker will receive a copy of the latest edition of *The Poll Cat* newsletter (copy enclosed). This tenth anniversary edition of *The Poll Cat* newsletter for pollworkers contains several articles focusing on implementing InkaVote Plus. One of these articles describes the first-person account of a husband and wife pollworker team who participated in the successful pilot program using the new equipment in 15 of the County’s precincts for the June 6, 2006 Primary Election.

We are in the final eight-week countdown to General Election Day. More information will be forthcoming as the date gets closer. In the meantime, if you or your key staff have questions or need additional information regarding the new voting equipment, please let me know.

### Attachments

c: Board of Supervisors  
Chiefs of Staff, Chief Deputies  
CAO  
County Counsel  
Secretary of State

## What is InkaVote Plus?

InkaVote Plus is an enhancement to the InkaVote paper ballot voting system used by Los Angeles County voters since 2003. It consists of three parts:

1. The **voting device** and the attached special ink marker. Each voter inserts the ballot into the device, securing the ballot over the red pins and then “inks” the ballot card.
2. The **precinct ballot reader (PBR)** sits on top of the ballot box. The PBR checks ballots for overvotes (making more selection for a contest than allowed) and for completely blank ballots (undervotes) and notifies the voter. This provides a second chance for the voter to correct his/her ballot.
3. An **audio ballot booth** is available to assist voters with special needs. Voters who are disabled, including those who are blind or visually impaired, may vote privately and independently using an audio headset and simple up/down arrow keypad. Also, voters whose main language is not English may choose to vote using the audio headset in Chinese (Cantonese or Mandarin), Japanese, Korean, Spanish/ Tagalog/Filipino or Vietnamese. Other voters may also prefer to vote using the audio equipment. Once the voter has made selections, the audio ballot booth produces a paper ballot which the voter then inserts into the PBR.

## How does InkaVote Plus protect the vote?

InkaVote Plus alerts voters to overvotes (making more selection for a contest than allowed) or completely blank ballots. This allows for a second chance to make corrections. This protects the vote by insuring each voter’s choices are reflected properly.

## How does the PBR work?

The InkaVote Plus precinct ballot reader (PBR) contains sensors in the ballot slot. When the sensors read an overvoted contest or a completely blank ballot, the ballot returns with a printed notification explaining the error. Ballots without such errors simply pass through the PBR and drop into the ballot box.

## Is my vote still private?

Yes! The InkaVote ballot may be inserted into the PBR in any direction including upside down. The PBR returns the ballot to a voter only if he/she has overvoted a contest or cast a completely blank ballot. If so alerted, the voter then returns to the ballot booth to make the correction.

## Can voters with disabilities use InkaVote Plus?

Yes! InkaVote Plus includes an **audio ballot booth** to provide an independent and private voting experience for voters who are blind, visually impaired or otherwise disabled. Using a private audio headset, voters with visual or other disabilities indicate voting choices using a simple keypad. Once voting is complete, a paper ballot is printed. That ballot is then inserted into the InkaVote Plus PBR like any other ballot. (Note: voting with the audio ballot does take more time due to “reading” the ballot prior to making selections.)

## How does InkaVote Plus help voters with limited-English skills?

The audio ballot provides service in six languages in addition to English. Voters may choose an audio ballot in any of the languages mandated by the Federal Voting Rights Act: Chinese (Cantonese or Mandarin), Korean, Japanese, Spanish, Tagalog/Filipino, or Vietnamese.

*For more information call the Registrar-Recorder/ County Clerk at (562) 462-2716*

# Other Voting Options Before Election Day...

## 1) ...by Absentee/Mail Ballot



### MAKE YOUR MARK!

Use a blue or black ink pen to fill inside the ballot bubbles.

### CHECK YOUR BALLOT!

**DO NOT** mark outside the bubbles or make any other markings on the ballot card.



### RETURN THE BALLOT.

Enclose voted ballot inside secrecy sleeve and place in lavender return envelope. **Be sure to sign, seal and place a stamp on the return envelope.**

## 2) ...by Touchscreen Early Voting

Available to all voters approximately two weeks before each major election. Check your sample ballot booklet for dates, times, and locations.



### LOS ANGELES COUNTY BOARD OF SUPERVISORS

**Gloria Molina**  
First District

**Zev Yaroslavsky**  
Third District

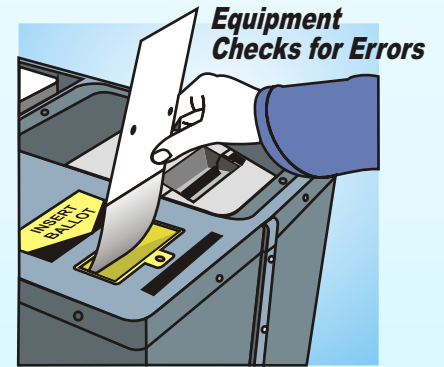
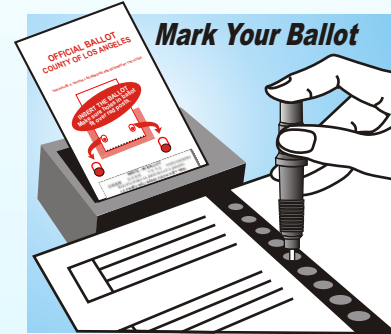
**Yvonne B. Burke**  
Second District

**Don Knabe**  
Fourth District

**Michael D. Antonovich**  
Fifth District

**Conny B. McCormack**  
Registrar-Recorder/County Clerk

# plus InkaVote is here To protect your vote



Also available: **AudioBallot**



# VOTE

Los Angeles County Registrar-Recorder/County Clerk

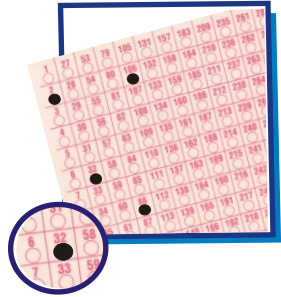
12400 Imperial Highway, Norwalk, CA 90650

(562)466-1323

[www.lavote.net](http://www.lavote.net)

# InkaVote *Plus*...

## What Is InkaVote?



InkaVote is an optical scan voting system.

Voters use an ink marking device to fill in bubbles on the ballot that correspond with vote selections.

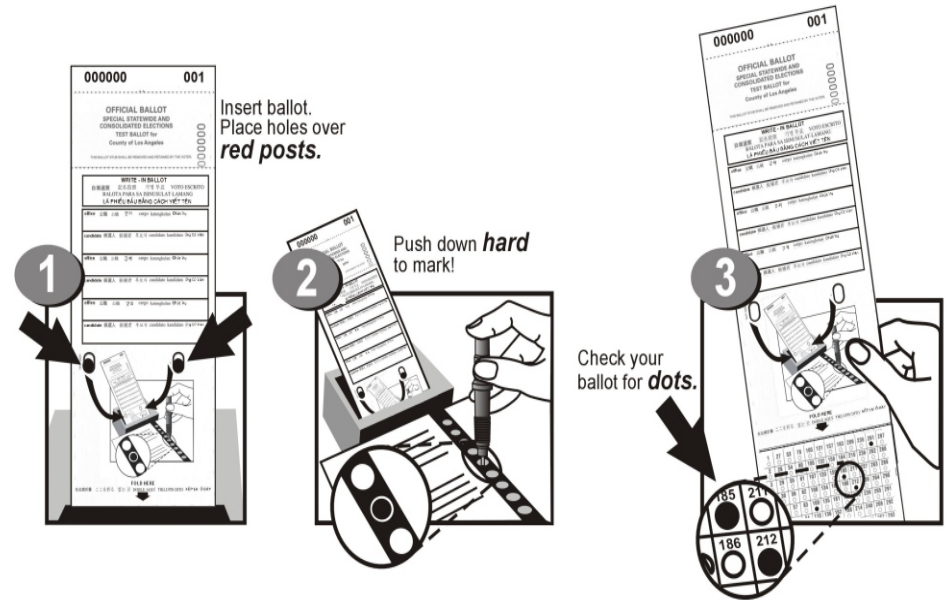
## Why The *Plus*?

InkaVote *Plus* is an enhancement to the InkaVote paper ballot voting system used in Los Angeles County elections since November 2003. It consists of three parts:

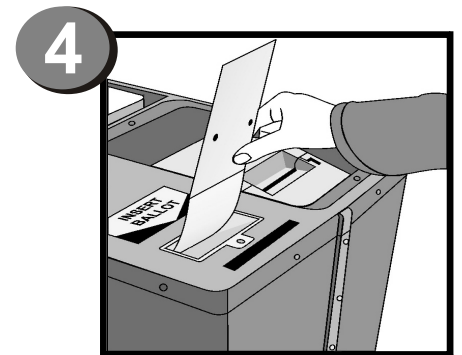
1. The **voting device** and special ink marker attached. Each voter inserts the ballot into the device securing the ballot over the red pins and then “inks” the ballot card.
2. The **precinct ballot reader (PBR)** sits on top of the ballot box. The PBR checks ballots for overvotes (more selections than a contest allows) and for completely blank ballots and notifies the voter. This provides a second chance to correct errors.
3. An **audio ballot booth** is available to assist voters with special needs. Voters who are disabled, including those who are blind or visually impaired, may vote privately and independently using an audio headset and a simple keypad. Also, voters whose main language is not English may choose to vote an audio ballot in Chinese (Mandarin or Cantonese), Japanese, Korean, Spanish, Tagalog/Filipino or Vietnamese.

## How to use

# InkaVote *Plus* on Election Day



Insert ballot into **InkaVote Plus**. It checks for Errors!



**Audio equipment also available to assist voters with disabilities or those with alternative language needs!**

## THE TIMES.....

### THEY ARE A CHANGING

Ten years ago it began to become apparent that the traditional source of pollworkers was diminishing. Women were entering the work force in large numbers and others were delaying their retirement. As the largest election jurisdiction in the U.S., L.A. County requires a vast number of volunteers to staff 5,000 polling places. The reducing numbers of available volunteers called for expanding recruitment efforts.

The State legislature helped by passing a law in 1996 making high school students eligible to serve as pollworkers. Also, the Los Angeles County Board of Supervisors recognized the need and encouraged County employees to serve on Election Day. Many corporations and service clubs joined in swelling the ranks of pollworkers. Community colleges and four year universities have included volunteering as a pollworker as part of their Political Science curriculum.

Even with these additional programs we continue to need more pollworkers. Which brings us to our greatest ally in the search for volunteers to work a very long day for a small stipend – YOU! We rely on you to help us make sure all polling places are sufficiently staffed to serve Los Angeles County's 4 million registered voters. You traditionally call on your relatives, friends and neighbors to assist you and help preserve our most precious right – the vote.

We are again asking you to put yourself in the fray and help us meet the goal of recruiting 25,000 pollworkers for November 7<sup>th</sup>, 2006. (see page 3)

## Conny's Corner



Do you remember that member for the June 6, 2006 Primary Election all 5,065 voting precincts displayed a large, color poster of the new InkaVote Plus voting equipment? The poster contained a teaser headline: "Coming for the November 7, 2006 Election" and pictured a voter inserting her ballot into the new, InkaVote Plus voting equipment. After much preparation and anticipation, it's finally here! We are excited to introduce InkaVote Plus, a key new tool for helping your voters on Election Day. Articles throughout this "Poll Cat" tell you about the many features and value of this new, easy-to-use voting equipment that will enhance the voting process.

Of course, change is always a challenge. Adding something new to polling place operations highlights the importance of all pollworkers attending a training class before election day. The training class schedule is included in this packet, along with your appointment notice. Please thumb through it right away and mark your calendar for a class near you. At the classes you will have the opportunity to touch, feel and see the new voting equipment and have your questions answered. Want to take a peek before you attend a class? Log on to our website at [www.lavote.net](http://www.lavote.net) and click on the 15-second video displaying the new InkaVote Plus voting equipment.

Thank you for serving on our election-day team. We anticipate that you and your 25,000 colleagues throughout Los Angeles County will assist millions of voters to cast ballots on November 7<sup>th</sup>! Please write or email us your stories after election day so that we can share with others in a future Poll Cat newsletter.

Have a great Election Day!

*Conny*



# POLL CAT

LOS ANGELES COUNTY NEWSLETTER FOR POLLWORKERS

Volume X Issue 2



Check Ballot

## INTRODUCING "INKAVOTE PLUS"

**Key Reasons Los Angeles County is Moving to The Future with InkaVote Plus**

- It's familiar to voters - "ink" instead of "punch!"
- Protects voters choices by notifying voters of mistakes (over votes or blank ballots)
- Blind and other disabled voters can vote without assistance using the audio ballot booth.
- Limited English proficient voters can hear the ballot in any of six other languages using the audio ballot booth.

## "VOTER GETS A SECOND CHANCE—TWICE!" A True Story

Marge, who votes at her polling place every Election Day, returned to the ballot box clerk with her InkaVote ballot. Marge inserted her ballot into the new InkaVote Plus Precinct Ballot Reader (PBR) -- but it came back out.

### Why did it do that?

The PBR printed a notification "BALLOT ALERT- No Selection." Pollworkers explained to Marge that her choices weren't marked on her ballot -- she had mistakenly cast a completely blank ballot! Marge went back into the voting booth where a pollworker helped her make sure her ballot was inserted properly into the voting device by securing the ballot over the two red pins. Then Marge used the inking device to clearly mark her voting choices.

Marge is a voter in Independence, Missouri who used the new InkaVote Plus equipment for the first time at their August 8, 2006 primary election. We are

sharing her story to illustrate the value of the new InkaVote Plus equipment in detecting voters' mistakes and allowing voters to make corrections on the spot. For the upcoming November 7<sup>th</sup> election, InkaVote Plus will be available at all 5,028 voting precincts in Los Angeles County helping voters to cast their ballots accurately.

Continued on page 2

### INSIDE THIS EDITION

Introducing InkaVote.....	Page 1
Voter gets 2nd Chance	Page 1
Training	Page 2
Meet Tim	Page 3
Pollworker Pride	Page 3
Happy Anniversary	Page 3
ISPU	Page 4
Young at Heart	Page 5
Teamwork	Page 5
We Love the Plus	Page 6
Dean's World	Page 6
FAQs InkaVote Plus	Page 7
Times They are a Changing	Page 8
Conny's Corner	Page 8

**Continued from page 1**

**What was observed?**

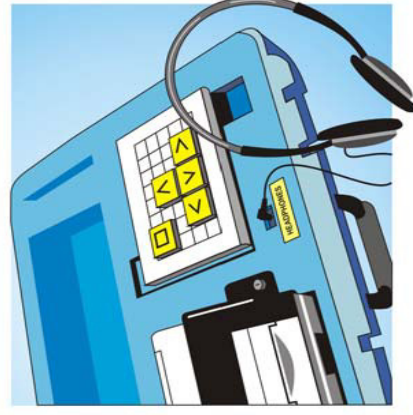
Several key managers at our Registrar's office traveled to Jackson County, Missouri to observe the first use of InkaVote Plus equipment in the U.S. on August 8. Our new Chief Deputy, Dean Logan, explained the added value of the new equipment by telling the rest of Marge's story. After getting her 'second chance,' Marge did get votes marked on her ballot. She proudly returned to the ballot box clerk and said, "Look! There's ink on my ballot now!"

However, when Marge inserted her voted ballot into the InkaVote Plus PBR, once again her ballot was ejected but with a different printed notification. Marge had accidentally overvoted her ballot by selecting two candidates in the same contest. Once again Marge returned to the booth to re-vote. "The InkaVote Plus PBR saved her vote," Logan explained. "That error would not have been discovered without the new PBR equipment. We witnessed InkaVote Plus truly protecting this woman's vote," he added.

**"Hearing" the ballot!**

In that same polling place where pollworkers teamed up with InkaVote Plus to make sure Marge's choices were captured on her ballot, our team also observed the other key feature of the new equipment in action. A blind voter came into that same polling place. Pollworkers explained to her that

InkaVote Plus enables independent voting using the audio headset to "hear" the ballot and make choices using the simple keypad.



After making all choices, the audio equipment produced a paper ballot with the voter's choices marked on it. "This voter was so happy to have the opportunity to vote privately without assistance for the first time in her life thanks to the new equipment," Logan said.

**What does Marge do now?**

Meanwhile, Marge finished voting her second replacement ballot. When she inserted her ballot into the PBR, she exclaimed: "Go in! Let it go in this time!" The third time was the charm! Marge's ballot slid smoothly through the PBR and dropped into the ballot box below. Marge took her "I Voted" sticker with pride, and left the polling place beaming. The Missouri pollworkers were pleased that with the help of the new equipment, they were assured that every vote counted.

With you, our dedicated pollworker corps in Los Angeles County partnering with the new InkaVote Plus equipment, we can all be confident that we will have many satisfied voters on Election Day, November 7, 2006!

\*\*\*

The article on page 6 of this Poll Cat describes how voters and pollworkers in LA County responded to InkaVote Plus at pilot precincts for the June Primary Election.

**TRAINING FOR INKAVOTE PLUS**

- Everyone needs to be familiar with the new equipment.
- The training schedule is in this appointment packet—attend a class near you.
- Please, don't wait until the end of the schedule when the classes will be full.
- Training class will include a "hands on" opportunity with the new equipment.

**You'll love it!**

**FREQUENTLY ASKED QUESTIONS ABOUT INKAVOTE PLUS**

**What is InkaVote Plus?**

InkaVote Plus is an enhancement to the InkaVote paper ballot voting system used in Los Angeles County elections since November 2003. It consists of three parts:

1. The **voting device** and the attached special ink marker. Each voter inserts the ballot into the device securing the ballot over the red pins and then "inks" the ballot card.
2. The **precinct ballot reader (PBR)** sits on top of the ballot box. The PBR checks ballots for overvotes (more selections for a contest than allowed) and for completely blank ballots (undervotes) and notifies the voter. This provides a second chance for the voter to correct his/her ballot.
3. An **audio ballot booth** is available to assist voters with special needs. Voters who are disabled, including those who are blind or visually impaired, may vote privately and independently using an audio headset and simple up/down arrow keypad. Also, voters whose main language is not English, may choose to vote using the audio headset in the choice of six foreign languages including Chinese, Japanese, Korean, Spanish, Taglog/Filipino or Vietnamese. Other voters may also prefer to vote using the audio equipment. Once the voter has made selections, the audio ballot booth produces a paper ballot which the voter then inserts into the PBR.

**How does InkaVote Plus protect the vote?**

InkaVote Plus alerts voters to overvotes (making more selections for a contest than allowed) or completely blank ballots. This allows for a second chance to make corrections. This protects the vote by insuring each voter's choices are reflected properly.

**How does the PBR work?**

The InkaVote Plus precinct ballot reader (PBR) contains sensors in the ballot slot. When the sensors read an overvoted contest or a completely blank ballot, the ballot returns with a printed notification explaining the error. Ballots without such errors simply pass through the PBR and drop into the ballot box.

**Is my vote still private?**

Yes! The InkaVote ballot may be inserted into the PBR in any direction including upside down. The PBR returns the ballot to a voter only if he/she has overvoted a contest or cast a completely blank ballot. If so alerted, the voter then returns to the ballot booth to make the correction.

**Can voters with disabilities use InkaVote Plus?**

Yes! InkaVote Plus includes an **audio ballot booth** to provide for independent and private voting experience for voters who are blind, visually impaired or otherwise disabled. Using a private audio headset, voters indicate voting choices using a simple keypad. Once voting is complete, a paper ballot is printed. That ballot is then inserted into the InkaVote Plus PBR like any other ballot. (Note: voting with the audio ballot does take more time due to "reading" the ballot prior to making selections).

**How does InkaVote Plus help voters with limited-English skills?**

The audio ballot provides service in six languages in addition to English. Voters may choose an audio ballot in any of the languages mandated by the Federal Voting Rights Act: Spanish, Chinese, Vietnamese, Korean, Japanese or Tagalog/Filipino.

## We love the PLUS in InkaVote Plus!

My husband Dick and I have been volunteering as pollworkers for L.A. County elections for ten years. We were excited to be one of the 15 precincts participating in the InkaVote Plus pilot program for the June 6, 2006 election.

What could be more important than voters knowing that their ballots will be counted as they intended? With the ballot checking feature of the InkaVote Plus equipment, we saw with our own eyes voters who were so appreciative when the new equipment notified them when they made a mistake. Some voters "overvoted" by marking too many choices in a contest, while others mistakenly made no selections due to inserting either the ballot or inking device improperly. When this happened, the InkaVote Plus precinct ballot reader (PBR) returned the ballot to these voters with a notification of the error. Each voter gladly accepted a replacement ballot and said "thank you" for giving me a second chance!

We know all of you will want to attend one of the 490 pollworker training classes in an area near you beginning October 4th. At class you will be able to touch, feel and see the new InkaVote Plus equipment for yourself.

Dick and I are looking forward to serving as pollworkers once again on the 7th of November.

*Susan Turner*

## Dean's World

Dean brings 18 years of experience in elections administration and recording of public documents to his new position as Chief Deputy Registrar-Recorder/County Clerk for Los Angeles County.

He previously served as Director of Elections, Records and Licensing in King County (Seattle), Washington. Prior to that he was the Director of Elections for the State of Washington.

Dean is strongly committed to working with you, our 25,000 pollworkers, to protect and improve the voting process.

The Logans, Dean and his wife Winnie, have two children. Their daughter is attending Loyola University in Chicago and their fifteen year old son is beginning his freshman year in high school. The Logan family resides in Whittier, CA.



Meet Dean Logan.

Greetings,

My name is Tim McNamara. In mid-July I joined the team as the new Assistant Registrar-Recorder/County Clerk over the Election Services Bureau.

Before coming to Los Angeles County, I worked for the San Diego County Registrar of Voters for 15 years, most recently as Chief Deputy.

It will be my pleasure to work with you – the 25,000 pollworkers in Los Angeles County – who support the largest election jurisdiction in the United States. I want to express my admiration for your service on the front lines of democracy!



## HAPPY ANNIVERSARY TO THE POLL CAT!

*The SS Poll Cat is setting forth on its TENTH YEAR ANNIVERSARY voyage bringing information and tips to help you, our great pollworkers, happily sail calm election seas.*

Together we have sailed smooth waters and avoided a Perfect Storm. As we cast off for this tenth year, our goal is to maintain a steady helm and keep the horizon in sight as we head for safe harbor—a successful election in November!

Our first Poll Cat voyage launched in 1996 with the punch card voting system in the hold and First Mates receiving \$55 plus \$5 for attending a training class. The punch card's hanging chad walked the plank in favor of InkaVote and "dots" now mark the spot.

*The true gold in our treasure chest is YOU, our long serving dedicated pollworkers. We're all on the lookout for new recruits. Our buccaneers are currently seeking new hands to join the crew so that we can haul anchor with a full complement aboard for November 7th. As we hoist the sails and meet the tide, together we will continue to serve the County's voters with integrity, confidence and the wind at our backs. Thank You!*

## Spread Your Pollworker Pride

Please help us recruit

**NEW pollworkers**

by asking friends, neighbors and co-workers to call us **TOLL FREE**

**1-800 - 815- 2666 "Option 7"**

**to join the Pollworker Team**

Remember, pollworkers got a "pay" raise earlier this year. Inspectors receive \$100 and Clerks \$80 AND also get \$25 for attending a training class.



## WHAT YOU NEED TO KNOW ABOUT INSPECTOR SUPPLY PICKUP

### Q. When is Inspector Supply Pick-Up (ISPU) Weekend?

A. Half the Inspectors have ISPU scheduled on Saturday, **October 21st** and the other half are scheduled on Sunday, **October 22nd**. Inspector's will receive a packet with the appointed pick up date, time and place. Usually your ISPU site and Election Night Check in Center (CIC) site are the same location. There will be a few exceptions so please check your CIC map in your supplies!

### Q. What will I be picking up?

A. Inspectors will pick up the following supplies and will now receive **\$50** for ISPU (it used to be \$25).

Black Supply Tub

Precinct Ballot Reader (new)

Suitcase with Vote Recorders

Audio Ballot Booth (new)

Voting Booths

### Q. How on earth am I going to get all those election supplies in to my car?



A. Tip to ensure the supplies will fit into your car: make sure your car is **EMPTY** when you come to ISPU. The photos show how easily the election supplies fit into a small, 2 door car.

### Q. What if I cannot make the ISPU date assigned to me?

- Ask a member of your precinct board to pick up the supplies.
- Ask a family member or friend to pick up the supplies.
- Call our Service Center and make arrangements to pick up the supplies in Montebello.

**INSPECTORS:** ISPU notifications will be mailed starting **October 7th**. If you have not received your packet by **Wednesday, October 11th**,

Please call the Service Center at

# 1-877-728-0235

## MEET A POLLWORKER TRULY YOUNG AT HEART

We now turn our spotlight on one of your most dedicated colleagues, Lucille Vining of La Mirada. Lucille is small in stature (4 ft 2 in) but she has been a giant of a pollworker for 20 years. Lucille often visits the Registrar's office in Norwalk and is known as "the Flower Lady".



Lucille also provided her home as a polling place for many years. When her precinct was moved into a Neighborhood Voting Center (NVC), Lucille went right along with that change.

Congratulations to Lucille on the occasion of her 92nd birthday! She is excited about working in the upcoming Election. When asked about picking up the new voting equipment, she replied proudly, "I have a truck and more than enough room for any supplies." Way to go Lucille!



Pictured standing are Leslie Foster, and Gilbert Medrano of our Polls Staff, seated is the star **Lucille Vining**.

The Flower Lady

## TEAMWORK MAKES IT HAPPEN

For those of you serving in a Neighborhood Voting Center (NVC), you realize the truth in the saying: "There is no "I" in TEAMWORK. An NVC is a voting location that houses two or more precincts in the same room. NVCs often get very busy on Election Day and "traffic control" (directing voters to their correct precinct table) is a key responsibility for the assigned NVC Director.

On Election Day NVC Directors will be key players in making sure the new InkaVote Plus equipment is up and running. No wonder NVC Directors are an Inspector's best friend! NVC Directors also help the Inspectors with closing procedures to make sure all precincts in the NVC have a smooth process after voting ends. Note: Of our 5,028 precincts 2,280 (45%) are located in 1,011 NVCs for the November 7<sup>th</sup> election!



**NEIGHBORHOOD VOTING CENTERS**