



Media Kit

PRESIDENTIAL GENERAL ELECTION
NOVEMBER 4, 2008

REGISTRAR-RECORDER/COUNTY CLERK DEAN C. LOGAN
12400 IMPERIAL HIGHWAY - NORWALK, CA 90650
www.lavote.net





COUNTY OF LOS ANGELES
REGISTRAR-RECORDER/COUNTY CLERK

12400 IMPERIAL HWY. – P.O. BOX 1024, NORWALK, CALIFORNIA 90651-1024 - www.lavote.net

DEAN C. LOGAN

Registrar-Recorder/County Clerk

October 10, 2008

Dear Members of the Media, Election Observers and Other Interested Individuals:

2008 PRESIDENTIAL GENERAL ELECTION MEDIA KIT

I am pleased to provide you with the November 4, 2008 “Presidential General Election Media Kit”. This kit contains most of what you need to know about the upcoming General including: candidate information, voter turnout and registration totals, historical statistics and vote by mail trends and comparisons. The information is presented in a user friendly style for easy access and clear reporting. For your convenience we have also posted the entire Kit in our electronic press room online at www.lavote.net.

Los Angeles County is the largest county elections jurisdiction in the United States. We have more than 4 million registered voters, 4,394 polling places and we recruit, train and place more than 25,000 pollworkers in each major election.

We have some exciting information to share regarding services provided for this election:

- **InkaVote Plus Provides Voter Protection and Accessibility:** We are proud to continue our history of providing voters of Los Angeles County with transparent and efficient elections. Our state-certified InkaVote Plus voting equipment not only provides a paper-audit trail, it also allows voters the chance to double check their ballot and those with specific needs to cast ballots independently without pollworker assistance.

The Precinct Ballot Reader (PBR) alerts a voter that she/he has “over voted” or when the ballot appears to be blank. An over vote is when a voter votes for more than the selections in a contest. A “blank ballot” is when a voter has not made any readable marks on a ballot. After the ballot kicks back, the voter is provided the opportunity to correct the ballot before it is secured in the ballot box.

The Audio Ballot Booth (ABB) is a voting assistance device equipped with headphones that allows voters with disabilities to move through the ballot by listening to instructions and voting by pressing a series of buttons on a key pad.

- **Vote By Mail Program Follows National Trend:** Jurisdictions all over the country are seeing their vote by mail programs expand and Los Angeles County is no exception.
- **Web Site Changes Make Information Easy to Access:** We have new features on our web site at www.lavote.com that make it easier to find your polling place, learn how to register to vote or track your vote by mail ballot.

One recent upgrade allows voters to track their vote by mail ballot applications and confirms when the voted ballot has been received by our office. This way, voters can be sure we received their application, that their ballot has been issued and that the voted ballot was returned and is ready to be counted after the polls close on Election Day.

Another feature helps registered voters identify their polling place. Voters can log onto our web site and click on the "Locate Your Polling Place" icon at the top of the page. When they get to the program they enter their street number and street name and the system provides the name and address of their polling location. Voters may also download their sample ballot from this section of the website.

An instructional video is also available on our web site link. Anyone can log into the site and watch an instructional video on Los Angeles County's InkaVote Plus voting system. The video shows the voter how to vote and how each piece of equipment operates.

- **New Operations Center Streamlines Operations:** In August 2007, our voting equipment and supplies section moved into our new Elections Operations Center in Santa Fe Springs. The new facility is a 100,000 square foot Operations Center and is more than twice the space of our former facility. The new facility boasts a state-of-the-art security system, a computerized equipment tracking and scanning system and adequate room for all of our election equipment.

I hope this information is useful to you. Please call us at (562) 462-2726 or (562) 462-2648 if you have any questions or if we can provide any further information. Remember – we're here to help.

Sincerely,

A handwritten signature in cursive script that reads "Dean C. Logan". The signature is written in black ink and is positioned above the typed name.

DEAN C. LOGAN
Registrar-Recorder/County Clerk

TABLE OF CONTENTS

PAGE

Important Phone Numbers	1
--------------------------------------	---

Key Services

• Vote You Count!.....	3
• InkaVote Plus.....	4
• Facts About InkaVote Plus.....	4
• Absentee Voting Now Called Vote By Mail	5
• Voting Options	5
• Pollworker Recruiting and Training Enhancements	5
• Poll Worker Training	6
• Line Monitor Clerks	6
• Election Operation Center (EOC).....	6
• Looking Ahead – Online Registration.....	6
• Sample Ballot Viewing Choices	7
• Streamlined Website.....	7
• Deputy Registrar Training Program	7
• Neighborhood Voting Centers (NVCs).....	8
• “Ballot Express” Will Call Service For Vote By Mail Ballot Pick Up....	8
• Campaign Financial Disclosure Statements.....	8
• Poll Location Available By Automated Phone.....	8
• Multilingual Voter Services.....	9
• Voters With Disabilities.....	9

About Our Department and Programs

• General Information.....	10
• A Statistical Overview.....	10
• Vote By Mail Information (How To, Trends, Counting).....	11
• Departmental Organization Charts.....	12
• Organization Chart Public Relations – Election Night.....	13
• Democracy In Action Programs.....	14
• Check Out Our Website!.....	18

Election Statistics

• A Statistical Overview.....	19
• Voter Registration Statistics.....	19
• Historical Voter Registration and Voter Turnout Information.....	20
• Historical Vote By Mail Voter Requests.....	21
• Historical Vote By Mail Ballots Cast Information.....	22
• Vote By Mail Ballot Counting - Times When Counted.....	23
• Speed of Ballot Counting Election Night – Historical Trends.....	23
• Provisional Ballots.....	24
• Election Costs.....	24

Preparing For The Election

• Precinct Officers and Polling Places.....	25
• Sample Ballot Booklet.....	26
• New Citizen Voting Procedures.....	26

What's On The Ballot?

- Qualifications and Terms of Office27
- Votes Required to Elect Candidates.....28
- Summary of Measures, Candidates and Offices on the Ballot.....29
- Summary of Partisan Candidates on Ballot..... 29
- Candidates, Voting Precincts, and Registration
By Partisan Office..... 30
- Placement and Rotation of Candidates' Names on Ballot..... 35
- Measures Appearing on Ballot.....37

Election Day/Night

- Speed of Ballot Counting Election Night – Historical Trends.....51
- Vote by Mail Ballot Counting – Times When Counted51
- How do the Ballots Get to Norwalk?52
- Voting and Ballot Processing Flow Chart53
- Incomplete Ballot Counting Election Night54
- How to Read Election Results Bulletin57

Wrapping Up The Election/Canvass

- What is the Vote Canvass?58
- Canvass Schedule59
- Requesting a Recount60

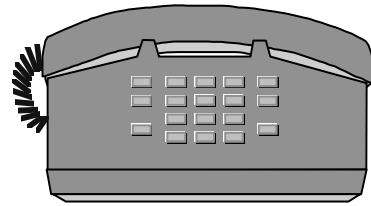
Most Commonly Asked Questions

- What is a Provisional Ballot and Why Do They
Take so Long to Process After Each Election? 64
- Why are the Phones so Busy at the Registrar's
Office on Election Day? 64
- Why Has My Voting Location Changed?.....65
- Are There Any Safeguards in the Vote Tally System
to Guard Against Fraud? 65
- What Provisions are Made for Voters with Disabilities?65
- What Provisions are Made for Multilingual Voters?.....66
- What is InkaVote Plus?67
- Common Questions About Vote by Mail Ballots, Registration
and Voting.....69

Future Elections

- 2009 Scheduled Elections.....76

IMPORTANT PHONE NUMBERS



You may obtain information about specific election services by calling the following telephone numbers.

Hourly Voter Turnout Information

Projected turnout reports (based on phone calls to sample precincts) will be issued each hour on the half-hour from 8:30 a.m. to 8:30 p.m. on election day.

**(562) 462-2726 or
(562) 462-2648
(for media use)**

Semi-Official Election Results

Preliminary Vote by Mail voting results will be available at approximately 8:30 p.m. election night. As ballots arrive from the precincts and are tabulated, results will be available approximately every 20 minutes until all 4,394 voting precincts have reported (also, see section on expected speed of ballot counting). ***** Election results will also be continuously updated and displayed on the Internet election night at www.lavote.net.**

(562) 466-1323

Election Results Information on Wednesday, November 5

From 8:00 a.m. to 5:00 p.m.

(562) 466-1310

Voter Registration/Sample Ballot Inquiries

To verify registration status or inquire about a sample ballot.

**(562) 466-1310 or
(562) 466-1323**

Vote-by-Mail Ballot Inquiries

(562) 466-1323

Election Information

General information on election, registration and voter services.

(562) 466-1310

Sample Ballot Translation

To receive a Sample Ballot booklet translated into Chinese, Japanese, Korean, Spanish, Tagalog/Filipino or Vietnamese.

(800) 481-8683

TDD (Telephone Device for the Deaf)

(562) 462-2259

Precinct Officers (Poll Worker)

To become a precinct officer

(800) 815-2666

Option #7

Polls

To offer a facility as a polling place or report problems at a polling place on Election Day.

(800) 815-2666

Option #7

Registering to Vote

To register to vote during regular office hours of 8 a.m. to 5 p.m. After hours, call (562) 462-2260 to leave a recorded message to request a voter registration form be mailed. (Note: The registration deadline for the November 4, 2008 Presidential General Election was October 20, 2008.)

(562) 466-1310

Candidate Nomination Procedures

Information regarding election dates, offices to be filled, qualifications for office, nomination filing dates and procedures.

(562) 462-2317

Campaign Financial Disclosure

Campaign financial statement filing requirements for candidates, committees and office holders.

(562) 462-2339

Voter Fraud Hot Line

To report factual information on illegal voter registration and/or voting activities.

(800) 815-2666

Option #3

KEY SERVICES

VOTER EDUCATION AND OUTREACH CAMPAIGN



In August of 2008, the Los Angeles County Registrar-Recorder/County Clerk launched a “Vote, You Count!” voter education and outreach campaign, and teamed with partners such as the Los Angeles Dodgers, UCLA Bruins and KCBS/KCAL to offer voter registration and education information to eligible voters of Los Angeles County in time for the upcoming November 4 Presidential General Election. The partnerships included a comprehensive media campaign, public service announcements and voter education and outreach events at venues such as the LA Dodger’s Stadium and UCLA Bruin football games in the months leading up to the November 4, 2008 Presidential General Election.



Registrar-Recorder/County Clerk (RR/CC) Dean Logan (right) is joined by Secretary of State Debra Bowen as the RR/CC is recognized as an official partner with the Los Angeles Dodgers on Friday, September 19, 2008.

INKAVOTE PLUS IS HERE TO PROTECT YOUR VOTE!

The *InkaVote Plus* voting equipment is an enhancement to the InkaVote optical scan paper-based voting system used in Los Angeles County since November 2003. Introduced in 2006, the *Plus* includes two key features at every voting location: a ballot reader and an audio ballot booth.

After voting the InkaVote ballot using the ink marker provided, each voter inserts his/her ballot into the InkaVote Plus reader. The reader checks the ballot for inadvertent errors. The reader alerts any voter who makes more selections in a contest than allowed – i.e. an “overvote” - or who mistakenly fails to ink the ballot at all – i.e. a blank ballot. Pollworkers will advise any voter who has overvoted or submitted a blank ballot of the opportunity to make a correction before casting his/her ballot (InkaVote Plus gives voters a second chance to ensure their votes are cast as intended). If no such errors were made, the voted ballot is accepted by the reader and automatically drops into a secure ballot box.

The second component is an audio ballot booth. This equipment is available in each precinct to assist voters who are blind or have specific needs to enable private and independent voting using an audio headset to create a paper InkaVote ballot. Audio voting may also be popular with voters whose primary language is other than English. The audio ballot is available in Chinese, Japanese, Korean, Spanish, Tagalog/Filipino and Vietnamese. The second chance voting feature provided by the ballot reader, together with the audio ballot booth, assures Los Angeles County is compliant with the Help America Vote Act and the Voting Rights Act.

FACTS ABOUT INKAVOTE PLUS

Facts about

InkaVote Plus Voting System

- Tested and approved by Federal Election Authorities (March 2006)
- Tested and certified by California Secretary of State (April 2006, January 2008)
- Used successfully for all Los Angeles County elections since November 2006

InkaVote Plus Voter Advantages:

- √ Prevents voters from casting blank ballots
- √ Prevents overvotes (more selections than a contest allows)
- √ Provides an audio option for:
 - Voters with visual impairments
 - Voters who prefer translation assistance

INKAVOTE PLUS VIDEO AND INFORMATION AVAILABLE ON WEBSITE

Located on the main page of www.lavote.net, the featured link can be accessed by selecting "InkaVote Plus Information" under the "November 4, 2008 General Election" header. Once the link has been selected, users will have the option of 1) viewing the 90 second InkaVote Plus video that describes how the equipment works, 2) perusing the "InkaVote Plus" brochure for information on the what, why and how of InkaVote Plus, or 3) browsing the Frequently Asked Questions page to find answers on how InkaVote Plus protects the vote, how voters with disabilities can use InkaVote Plus and how InkaVote Plus can help voters with limited-English skills.

ABSENTEE VOTING NOW CALLED VOTE BY MAIL

As of January 1, 2008, with the passage of Assembly Bill 1243, California's absentee voting program was redesignated as "Vote by Mail". The new name is intended to better reflect voters' rights with respect to voting by mail. In California, all registered voters have the option to vote by mail, regardless of whether they are going to be 'absent' on Election Day.

For the November 4, 2008 Presidential General Election, we anticipate that between 900,000 to 1,100,000 voters will take advantage of this vote by mail process in Los Angeles County.

VOTING OPTIONS: "Three Choices, No Excuses"

The range of voting options available to Los Angeles County voters to cast a ballot in the November 4, 2008 Presidential General Election includes: 1) voting by mail; 2) in person early voting at the Registrar-Recorder/County Clerk's Headquarters; or 3) voting at the designated neighborhood polling place on Election Day (location listed on back cover of sample ballot).

POLLWORKER RECRUITING AND TRAINING ENHANCEMENTS

- **"County Pollworker" Program.** This program permits Los Angeles County employees to be reassigned (with permission of their supervisors) to the Registrar's Office to serve as pollworkers on Election Day. Since the program's inception in 1998, more than 33,000 County employees have served as pollworkers. We anticipate more than 4,400 County employees will serve for the November 4, 2008 Presidential General Election.
- **Pollworker Training Classes.** In advance of the November 4, 2008 Presidential General Election, more than 500 pollworker training classes were held. Designated classes include language assistance for bilingual pollworkers.
- **Student Pollworkers.** As noted in the "Democracy in Action" section of this Media Kit, California law allows the recruitment of high school students 16 years or older to serve as pollworkers. Since the program's inception in 1998, over 19,900 students throughout Los Angeles County have participated in the Student Pollworker Program. We anticipate more than 4,000 high school students will serve for the November 4, 2008 Presidential General Election.

WHAT'S NEW

POLLWORKER TRAINING

Our Training Section offers over 500 interactive training classes throughout the County in the four weeks preceding each major election. Classes for the November 4, 2008 Presidential General Election feature the video "Perfect Polling Place" which focuses on the basics of Election Day including setting up the polls, processing voters, using the InkaVote system and closing the polls. Thanks to the partnership with all County and City libraries, DVDs are available at each reference desk for interested pollworkers. The June 2008 Primary was the first time in Los Angeles County that pollworkers were also provided Online Training. The Online Training allows pollworkers the opportunity to preview or review election procedures in the convenience of their own homes or anywhere else where the Internet is available. This training is also being used for the November 4 Presidential General Election and includes a new module covering Provisional ballots.

LINE MONITOR CLERKS

Historically, Presidential General Elections have had the largest voter turnouts. In an effort to expedite the voting process at the polling place for the upcoming November 4th election, a new Line Monitor Clerk position was created to assist waiting voters and prepare them for the voting process prior to the voter arriving at the Official Table to sign the roster. The Line Monitor Clerk position goes into effect when a substantial line of voters who are waiting to vote has formed at the polling place and when most of the voting booths are currently occupied. The specific duties of the Line Monitor Clerk are performed by either the Inspector or another Clerk and include instructing voters to review their sample ballot before going into the voting booth, providing a sample ballot to voters who do not have a copy, offering a demonstration on the use of the vote recorder device and requesting voters to try to limit their time to ten minutes in the voting booth.

ELECTION OPERATION CENTER (EOC)

An Open House is planned to unveil original artwork by Rebeca Mendez that will be displayed permanently at the Election Operations Center. The piece is a depiction of the diversity of the County represented by trees which are now considered indigenous to Los Angeles County. In what was once a desert there is now a diversity of land, people, time and trees. The trees were brought to the County from different areas and countries, much like its people. The artist's goal was to evoke the calm and comfort that the trees portray to the employees when they look at the art.

LOOKING AHEAD - ONLINE REGISTRATION

California residents will soon have the option to register to vote online. A new law enabling this procedure will take effect in 2010 when the state's new voter database, VoteCal, is completed. Registrants will enter their driver's license numbers along with other identifying information, and their signatures will be added as digital images pulled from the California Department of Motor Vehicles database. California will be the third state to allow online registration.

SAMPLE BALLOT VIEWING CHOICES

Voters may now choose to view or download their full sample ballot for the November 4, 2008 Presidential General Election from our website, www.lavote.net. The website feature includes official ballot pages (also available in Chinese, Japanese, Korean, Spanish, Tagalog/Filipino and Vietnamese), candidate statements, ballot measures, analysis and arguments for or against, as applicable to the voter's ballot. There are 706 different ballot groups for this election with different local contests depending on the voter's districts. Sample ballots may be viewed by selecting "Sample Ballot Lookup" from the Online Services menu on the Department's website.

STREAMLINED WEBSITE

The Department's website was modernized and streamlined to conform to the standard format for Los Angeles County government sites. The streamlined look offers a number of user-friendly features to assist with locating the information needed. Some of these features include:

- Online services providing instant access to the most commonly accessed information.
- Interactive capabilities that enable users to download forms, complete and file forms online, access related featured links, and find polling place and sample ballot information.
- A new online service, the '*Voter Registration Status*' function allows voters to confirm that their voter registration application has been received by the Registrar-Recorder/County Clerk's Office. This service may be accessed by selecting the "Voter Registration Status" option in the Online Services menu on the RR/CC's Home Page.
- The online "Press Room", which provides members of the public and news media with timely and clear information regarding the RR/CC, including press releases, statistical information, media kits, fact sheets, photographic images, public service announcements, a calendar of events and election information.

DEPUTY REGISTRAR TRAINING PROGRAM

The Los Angeles Registrar-Recorder/County Clerk has a Deputy Voter Registrar Training program for those organizations and individuals involved in registering voters and conducting petition drives. Topics will includes proper methods and techniques for registering voters, assisting electors with the completion of voter registration forms, and important California Election Codes related to registration requirements. Participants will receive a copy of "The Guide To Registering Voters" and a Deputy Registrar of Voters Certificate upon the successful completion of the hour and a half training program.

If you or your organization is interested in attending this free training program, please contact the Voter Records Administrative Unit.

Patt Sanders psanders@rrcc.lacounty.gov 562-462-2881

Abigail Chavez achavez@rrcc.lacounty.gov 562-462-2937

Carlos Madrigal cmadrigal@rrcc.lacounty.gov 562 462-2843

NEIGHBORHOOD VOTING CENTERS (NVCs)

In an effort to recruit and retain voting locations that are visible, stable, sizeable, accessible for voters with disabilities and with adequate parking, the County must select voting locations that are larger. NVCs fit this description and accommodate more than one precinct.

Between major elections, traditionally between 10-15 percent of Los Angeles County's polling places must be replaced because previously used locations are no longer available. The transition to NVCs involves identifying and securing long-term partnerships with polling place hosts, which will achieve desired stability and minimize voter confusion. Examples include government buildings, schools, recreation centers and community centers.

Our Department provides a variety of services to assist in directing voters to their correct polling locations including listing the poll address on the back cover of all sample ballot booklets, posting poll addresses on our website and an automated phone system which can be accessed 24 hours a day to determine where to vote. Partners, including city clerks and representatives of many community based organizations all assist in responding to thousands of voter inquiries and help direct voters to correct polling locations using the Department's interactive website and toll free numbers.

“BALLOT EXPRESS” WILL-CALL SERVICE FOR VOTE BY MAIL BALLOT PICK-UP

Since the 2004 General Election, the Registrar has offered a convenient service entitled Ballot Express, a “will-call” service for vote by mail voters. Traditionally, thousands of voters walk into our Norwalk office to apply for and pick up a vote by mail ballot. The volume is especially high during the week prior to a major election, which previously resulted in voters waiting for up to 30 minutes for service. The Ballot Express service allows voters to call (562) 466-1323 in advance and arrange to have a vote by mail ballot ready when they arrive at the office. Any registered voter is eligible to use the Ballot Express service.

CAMPAIGN FINANCIAL DISCLOSURE STATEMENTS

Interested persons may view campaign finance reports for County offices on the Registrar-Recorder/County Clerk's website, www.lavote.net. To access the online reports, click on “View Campaign Reports” under the Campaign Finance Disclosure section in the “Voter & Election Information” section of the website. This will take viewers directly to the Campaign Finance Reports page where search indexes can be found by Election, Candidate name, Committee and Measure. The reports are provided as PDF files. To view these files requires a free Adobe Acrobat Reader. A link to download this application is available on the Campaign Finance Reports page.

POLL LOCATION AVAILABLE BY AUTOMATED PHONE

Determining poll locations for voters calling us prior to and on Election Day is facilitated through two Interactive Voice Response (IVR) servers containing 192 lines, as well as a live phone bank with more than 100 operators. When calling 1-800-815-2666, each caller is prompted to enter his/her zip code, the digits corresponding to the voter's house number and numeric birth date. The IVRs will instantly interact with the voter registration database seeking a match for this data. When the polling location is found, the system will automatically read the location to the voter. This phone system allows up to 192 callers to call in at the same time, 24 hours a day available through Election Day. Operators are also available to assist callers who want to speak with a “live” operator.

MULTILINGUAL VOTER SERVICES

In accordance with federal law and in a continuous effort to assist voters whose primary language is other than English, the Registrar-Recorder/County Clerk provides voter registration information, election materials and oral assistance in six languages other than English (Chinese, Japanese, Korean, Spanish, Tagalog and Vietnamese). Voters who request election materials in one of these languages will be mailed a translated sample ballot for all Los Angeles County conducted elections.

Additionally, the RR/CC website provides online election information for voters in Spanish, Chinese, Japanese, Korean, Vietnamese and Tagalog/Filipino, in addition to English. Voters may view a sample ballot and other election materials in any of these six languages by visiting our website at www.lavote.net. For additional information on multilingual services or to request multilingual materials prior to an election visit our website or call our Multilingual Assistance Hotline at (800) 481-8683.

VOTERS WITH DISABILITIES

What is our goal? 100% participation of eligible voters in all elections, 100% polling place accessibility, and options for all voters who seek independent voting. In compliance with federal law and state law, we provide services to voters with disabilities including:

- InkaVote Plus audio ballot booth at every polling place
- Accessible polling places wherever possible (Currently, 98% of polls are accessible)
- Wheelchair accessible voting booths
- Large type voting instructions and magnifying devices at polling places
- Audio cassette tapes with state and county ballot measures
- Vote by mail and permanent vote by mail voting options
- Pollworker assistance at any step

What does the law say? Four federal laws are of special importance to voters with disabilities and the elderly:

- *Voting Rights Act of 1965* – Any voter requiring assistance may receive it from a person of the voter's choice, other than the voter's employer or agent of that employer or officer or agent of the voter's union.
- *Voting Accessibility for the Elderly and Handicapped Act, 1984* – Promotes the fundamental right to vote by requiring "access for elderly and handicapped individuals to registration facilities and polling places in federal elections."
- *Americans with Disabilities Act of 1990 (ADA)* – Requires public entities to provide auxiliary aids and services where necessary to afford an individual with a disability an equal opportunity to participate in, and enjoy, the benefits of service, program or activity conducted by a public entity.
- *Help America Vote Act of 2002 (HAVA)* – At least one direct recording electronic voting system or other voting system available at each polling location to enable individuals with disabilities including blind voters to vote independently.

ABOUT OUR DEPARTMENT AND PROGRAMS

GENERAL INFORMATION

The Registrar-Recorder/County Clerk is responsible for registration of voters; maintenance of registration files; conducting federal, state, local and special district elections; checking initiatives, referenda and recall petitions; filing campaign reports; recording real estate documents and other records; maintaining birth, death and marriage records; issuing marriage licenses, and filing business documents. The fiscal year 2008-2009 budget of the Registrar-Recorder/County Clerk is approximately \$178 million and annually the Department collects over \$220 million in revenue for the County General Fund and its 88 cities. The Department's permanent budgeted staff is 1,130.

Los Angeles County has a population of roughly 10 million residents, which accounts for approximately 30% of the total population of the State of California. Los Angeles County has more residents than any other County in the nation. Los Angeles County, with more than 500 political districts and more than 4 million registered voters, is the largest and most complex election jurisdiction in the country. More ballots were cast in Los Angeles County for the November 2004 General Election (3,085,582) than were cast statewide in 41 of 50 states. That election also broke virtually every previous County record and statistic ever compiled. A sample of the staggering statistics includes: record number of voters casting ballots (79% voter turnout), and the largest number of pollworkers (30,381). In addition to presidential and gubernatorial primary and general elections, the Department provides support services for approximately 200 city, school and special district elections each year.

The administration of a countywide election is akin to a major military deployment. For example, the November 4, 2008 Presidential General Election requires processing candidates, recruiting and training 25,000+ precinct workers and mailing sample ballot information pamphlets to 4 million+ registered voters. We anticipate issuing more than 900,000 vote by mail ballots and expect to count more than 3 million ballots for this election.

A STATISTICAL OVERVIEW

- Number of Registered Voters 4,093,488*
- Number of Elective Contests Involved in Election..... 131
- Number of Ballot Measures 60
 - Statewide (Props 1A-12) 12
 - Local Districts 48
- Number of Poll Locations..... 4,394
- Number of Precinct Officers..... 25,000+
- Number of Ballot Groups 706

*Figure as of October 10, 2008.

VOTE BY MAIL BALLOT INFORMATION (HOW TO, TRENDS, COUNTING)

An Interesting History.....Absentee voting goes back a long way. In fact it all began during the Civil War when the first absentee ballots were allowed by the North for soldiers and sailors. California first allowed absentee voting in 1920. Universal absentee voting began in 1978. Prior to 1978, absentee ballots were available only to the ill and disabled, those who lived too far from the polls and in other special circumstances. As a result of the change in legislation allowing any person to vote absentee, it has become a very popular means to cast a ballot. For the November 2, 2004 General Election 816,637 absentee ballots were requested and 701,693 absentee ballots were cast. As of January 1, 2008, with the passage of Assembly Bill 1243, California's absentee voting program was redesignated as "Vote by Mail".

The first day to apply for a vote by mail ballot for the 2008 Presidential General Election was October 6. Vote by mail requests must be received no later than October 28. Vote by mail ballots may be requested in one of the following ways:

- Completing the Vote by Mail application on the back cover of the official sample ballot booklet sent by the RR/CC to each registered voter;
- Sending a letter addressed to the Registrar-Recorder/County Clerk Office, Vote by Mail Section, P.O. Box 30450, Los Angeles 90030-0450;
- By Fax to the Registrar-Recorder/County Clerk Office, Vote by Mail Section at (562) 462-2354;
- Accessing the Registrar-Recorder/County Clerk website at www.lavote.net and completing a Vote by Mail application online; and
- In person at the Registrar-Recorder/County Clerk Headquarters, 12400 Imperial Highway, Norwalk, 3rd Floor, Room 3002.

Vote by mail ballots cannot be requested over the telephone.

The following provides a list of remedies if you applied for a vote by mail ballot and have not received it within a week after mailing your application.

- Call the Registrar-Recorder/County Clerk's office to request a replacement vote by mail ballot;
- Vote at the Registrar's Office during the vote by mail period (from 29 days prior to the election through election day); or
- Vote at your designated neighborhood polling location.

To be counted, all voted vote by mail ballots must be mailed in time to be received by the Registrar's Office by 8:00 p.m. on November 4, or dropped off at any polling place in the County no later than 8:00 p.m. on Election Day.

The voter may authorize a designated family member to return their voted ballot to any polling place in the County or to the Registrar's Office. Under special circumstances a voter may request an emergency vote by mail ballot beginning October 29 through Election Day, November 4. For additional information regarding this service or any questions regarding voting by mail, call the Vote by Mail Section at (562) 466-1323 between the hours of 8 a.m. and 5 p.m., Monday through Friday or go online to www.lavote.net.



REGISTRAR-RECORDER/COUNTY CLERK ORGANIZATION CHART 2008

REGISTRAR-RECORDER/COUNTY CLERK
DEAN C. LOGAN
(562) 462-2883

EXECUTIVE ASSISTANT
PAUL M. BRIGAN
462-2877

EXECUTIVE LIAISON
VACANT
462-2721

COMMUNITY SERVICES & VOTING SYSTEMS EDUCATION & OUTREACH
JULIA KEH
462-2754

MULTILINGUAL SERVICES SECTION
LETTY CAMBERIA
462-2832

STUDENT PROFESSIONAL WORKERS (INTERNS)

MEDIA INFORMATION
MARCA VENTURA
462-2726

CHIEF DEPUTY
VACANT
462-2883

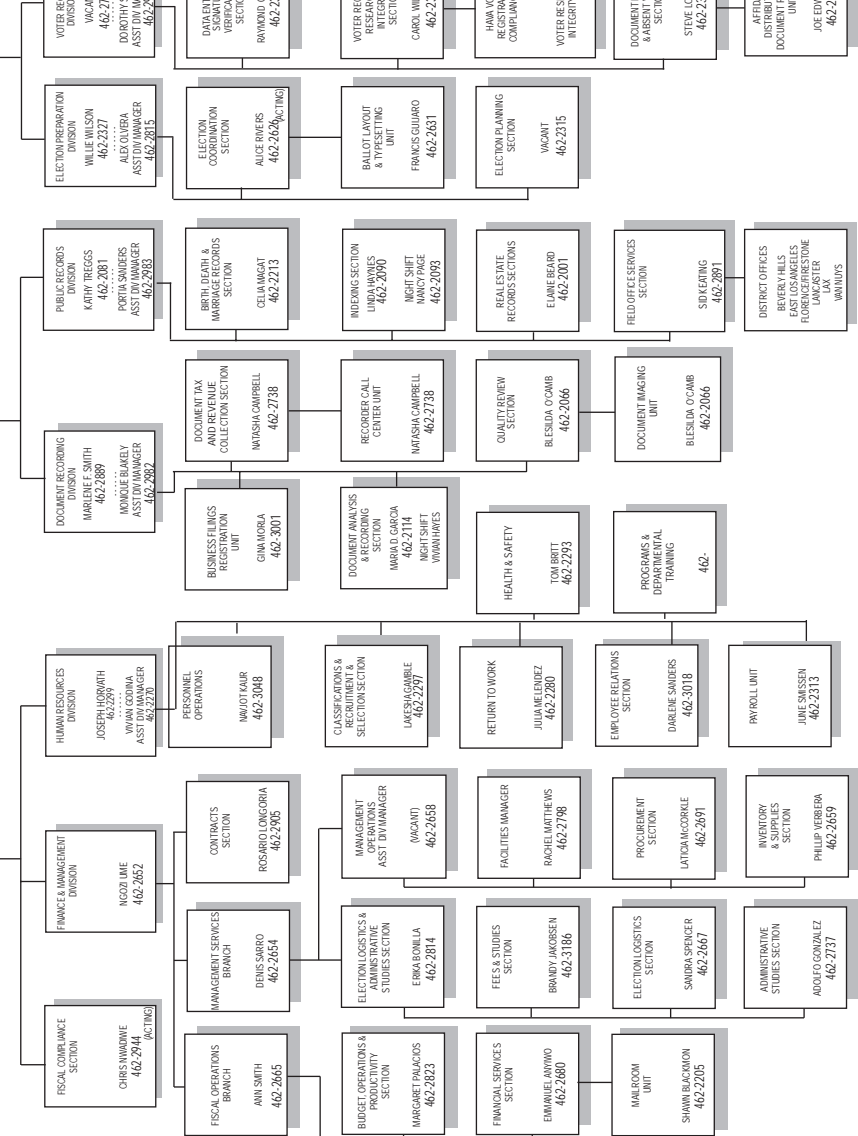
ASSISTANT REGISTRAR-RECORDER/COUNTY CLERK
ADMINISTRATION BUREAU
KATHLEEN CONNORS
462-2638

ASSISTANT REGISTRAR-RECORDER/COUNTY CLERK
RECORDING BUREAU
SHARON A. GONTERMAN
462-2073

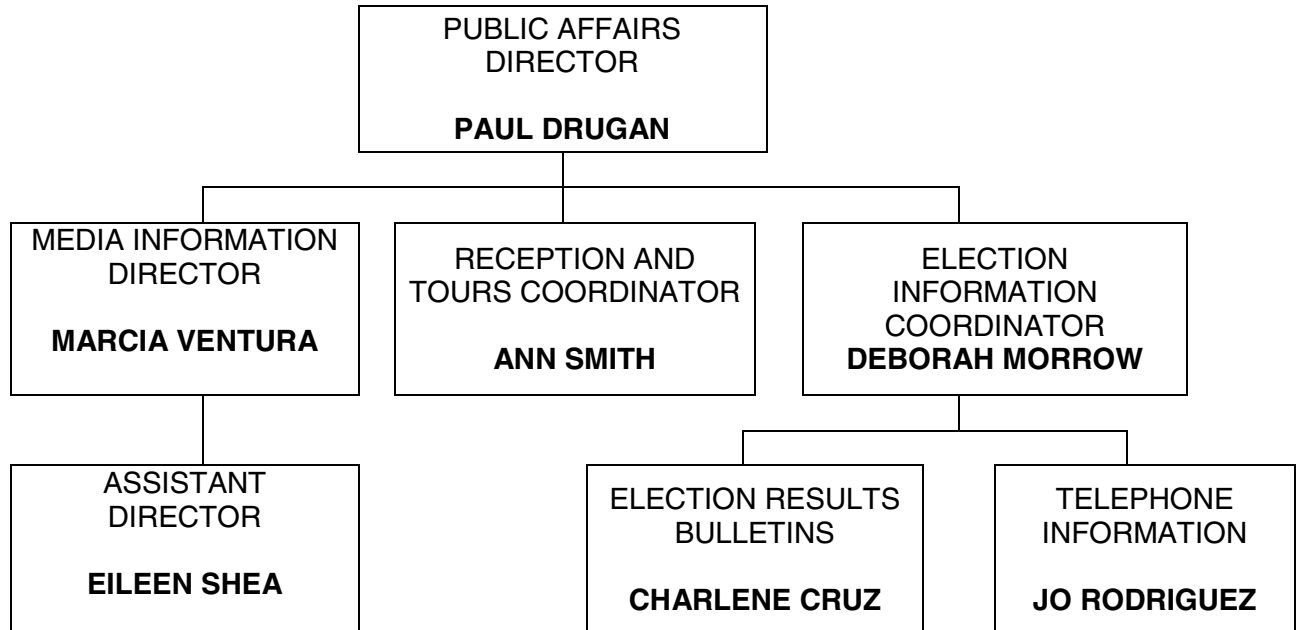
ASSISTANT REGISTRAR-RECORDER/COUNTY CLERK
ELECTION PREPARATION BUREAU
DARLENE BONIS
462-2696

ASSISTANT REGISTRAR-RECORDER/COUNTY CLERK
ELECTION SERVICES BUREAU
TRISH HAMMER
462-2722

ASSISTANT REGISTRAR-RECORDER/COUNTY CLERK
TECHNICAL SERVICES BUREAU
MICHAEL PEREPELO
462-2712



ORGANIZATION CHART PUBLIC RELATIONS - ELECTION NIGHT



DEMOCRACY IN ACTION PROGRAMS

HIGH SCHOOL (H.S.) STUDENT POLLWORKER PROGRAM

What Is the H.S. Student Pollworker Program?

The H.S. Student Pollworker Program (SPP) provides high school students with an exciting opportunity to serve as pollworkers on Election Day. It is a great way to introduce young people to Democracy in Action and at the same time provides students a valuable community service opportunity.

What are the Program Qualifications?

- 16 years or older
- U.S. Citizen
- Good academic standing
- Grade point average of 2.5 or greater
- Must have teacher and parental consent

What Are The Program Benefits?

For Students

- Earn extra credit in class or fulfill their service learning credit
- Get paid \$80 for working on Election Day plus an additional \$25 if they attend training
- Hands on introduction to Democracy in Action
- Looks great on college/scholarship applications and resumes

For Teachers

- Complements the students' in-class civics curriculum requirements
- Their students express their appreciation for the voting process and use their new knowledge in class
- Teacher Coordinators are paid \$100 for coordinating the program at their school plus an additional \$25 bonus if they attend a training class

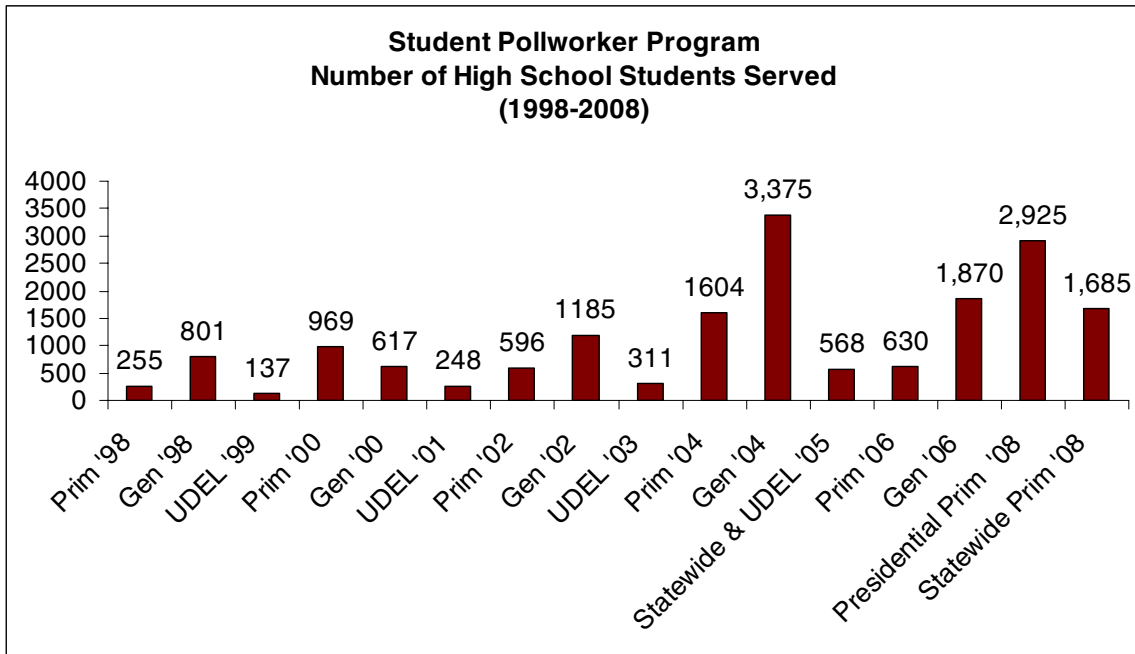
For Veteran Pollworkers

- Students bring new energy and enthusiasm
- Students can assist with carrying and setting up heavy election supplies

For Election Officials

- An additional pool of pollworkers from which to recruit
- Students are more likely to show up on election day because they have made a commitment to their teachers
- Students are in "learning mode" so they quickly absorb complex election procedures covered in training
- Many students are bilingual

STUDENT POLLWORKER PARTICIPATION HISTORY



LA County High School students prepare to work the polls on Election Day.

COUNTY POLLWORKER PROGRAM

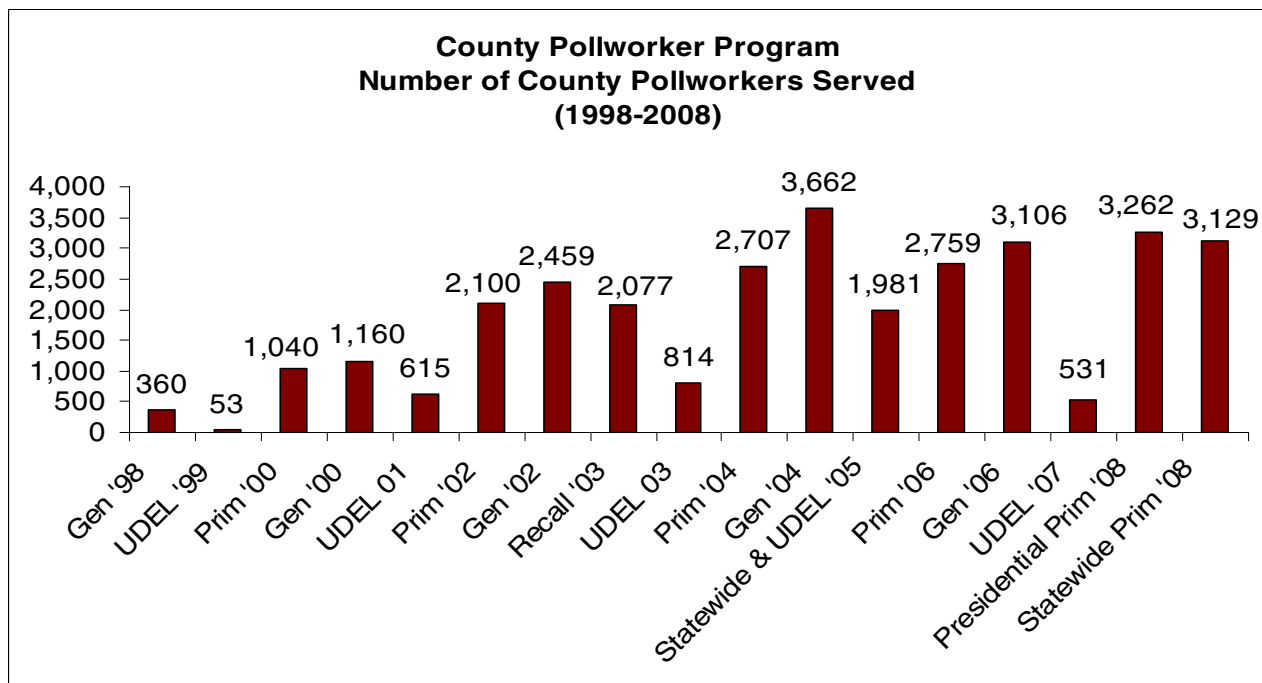


Overview

Critical pollworker recruiting problems and Election Day "no shows" forced election officials nationwide to turn to increasingly creative ways to supplement the traditional force of dedicated pollworkers. A pilot "County Employee Voluntary Pollworker Program" was created and has been in effect since November 1998. The Board of Supervisors endorsed this pilot program permitting voluntary "reassignment" of County employees (with their supervisor approval) to the Department of Registrar-Recorder/County Clerk on Election Day. Based on the great success of the pilot program, the Board of Supervisors approved the transition of the pilot "County Employee Voluntary Pollworker Program", to a permanent County Program on July 31, 2001.

For the November 1998 Gubernatorial Election, 360 County employees served as "County Pollworkers." The program has since expanded to a record number of 3,662 who served in the November 2004 Presidential Election. Participation from county employees continues to be successful. For the February 2008 Presidential Primary Election 3,262 County Employees served. The program is popular with County employees, providing participants with a community service opportunity while helping alleviate critical pollworker shortages.

PARTICIPATION HISTORY



ELECTION NIGHT VOLUNTEER PROGRAM

We are continuing an innovative program to utilize volunteers to replace paid workers in the processing of ballots on election night. The **“Election Night Volunteer Program”** was implemented to reduce expenditures and simultaneously promote community involvement in the election process. Since the inception of the program in the 1996 General Election, **approximately 3,100 students from various local high schools have volunteered** to work in the Tally Center - Election Headquarters. Teachers are given a stipend when accompanying a group of volunteers to work in the Tally Center Election Headquarters. Teacher involvement has been a major component of the success of this program. Student volunteers benefit by receiving a first hand view of democracy at work, creating an understanding of the election process through community service and school extra credit from their teachers. For the November 4, 2008 Presidential General Election, approximately 150 students have been recruited to perform a variety of assignments including ballot receipt, unpacking and inspection.

COMMUNITY PARTNERSHIPS

In 1998, we established the Community Voter Outreach Committee (CVOC) to maximize the County’s voter outreach to the community. We forged strong partnerships with over 100 community organizations including the Los Angeles County League of Women Voters (LWV), the National Association of Latino Elected Officials (NALEO), Center for Asian Americans United for Self Empowerment (CAUSE), Korean Resource Center, Independent Living Center, Braille Institute, NAACP - Los Angeles, Southern California Rehabilitation Services, United Cerebral Palsy - Los Angeles, the Asian Pacific American Legal Center and many more.

PARTNERSHIP WITH DMV

In our continued commitment to increase voter participation, extend community outreach and improve customer service, procedures were developed and programs implemented to enhance the voter outreach programs and our partnership with the Department of Motor Vehicles (DMV) to improve the federally mandated DMV “motor voter” registration program. This proactive, enhanced program which started in 1993 includes on-site visits to DMV staff meetings at local DMV offices and regular communication between the Registrar-Recorder/County Clerk and DMV staff; conducting on-site voter registration drives at designated DMV office locations prior to major elections. The program’s goal is to reduce the number of persons attempting to register at their local DMV office who encounter a problem. This program has been commended by the Secretary of State.



CHECK OUT OUR WEBSITE!

www.lavote.net

Web Site of the Los Angeles County Registrar-Recorder/County Clerk (RR/CC)

HERE'S WHAT YOU CAN LOOK UP:

Election Information



- ★ "[Voter Registration](#)" – Want to register to vote? Find out if you are eligible, where to obtain a registration form, and how to register by mail.
- ★ "[Where Do I Vote?](#)" - Look up your neighborhood polling place (if 18 and registered to vote).
- ★ "[What Are My Districts?](#)" - Did you know you might be eligible to vote in a Mosquito Abatement District? Find out all the districts in which you are eligible to vote.
- ★ "[Who Are My Elected Officials?](#)" – Find out who represents you in such districts as the Board of Supervisors, assembly, senate, congressional, etc.
- ★ "[Vote by Mail Voting](#)" – Receive information regarding vote by mail ballots by downloading a vote by mail ballot application.
- ★ "[Vote by Mail](#)" Status – Confirm that a Vote by Mail Ballot has been received by the Registrar-Recorder/County Clerk's Office.
- ★ "[Election Results](#)" – Get up to the minute "live" results on Election Night and check whether your favored candidates or measures are winning.
- ★ "[Election Calendar/District Elections](#)" – Find out the deadlines for candidates to file nomination documents for upcoming elections. Find out what elections will take place and their scheduled dates.
- ★ "[News Releases](#)" – Find out about important events, elections, and deadlines affecting Los Angeles County elections.
- ★ "[Political Party Information](#)" – Find out information, events, candidates, etc. about the political party that interests you.
- ★ "[Candidate Registration](#)" – Registration information is provided on-line. You may find what offices will be on the ballot and the qualifications needed to become a candidate.
- ★ "[What's On My Sample Ballot?](#)" – View your actual ballot, including candidates and ballot measures applicable to your geographic area (congressional, state, assembly, etc.).
- ★ "[County Initiative Procedures](#)" – You may view the procedures that must be followed in order to place a county initiative on the ballot.
- ★ "[Multilingual Voter Services](#)" – Find out about services for voters who require assistance in Chinese, Japanese, Korean, Spanish, Tagalong/Filipino and Vietnamese.
- ★ "[Who Is My City Clerk?](#)" – Don't forget about local elections where your vote can really make a difference. Call your City Clerk and find out about your next local election.

ELECTION STATISTICS

A STATISTICAL OVERVIEW

- Number of Registered Voters.....4,093,488*
- Number of Elective Contests Involved in Election..... 131
- Number of Ballot Measures..... 60
 - Statewide (Props 1A-12)..... 12
 - Local Districts 48
- Number of Poll Locations..... 4,394
- Number of Precinct Officers25,000+
- Number of Ballot Groups 706

VOTER REGISTRATION STATISTICS

In Los Angeles County, current voter registration for the November 4, 2008 Presidential General Election is:

	REGISTRATION*	PERCENTAGE
Democratic	2,126,433	51.95
Republican	1,021,716	24.96
American Independent	74,313	1.82
Green	21,369	.52
Libertarian	17,364	.42
Peace and Freedom	20,118	.49
Non-Partisan	34,090	.83
Decline to State	802,300	19.6
TOTAL REGISTRATION	4,093,488	100%

Voter registration for the five Supervisorial districts within Los Angeles County is provided below:

	REGISTRATION*
First Supervisorial District Gloria Molina	611,491
Second Supervisorial District Yvonne Brathwaite Burke	727,306
Third Supervisorial District Zev Yaroslavsky	887,756
Fourth Supervisorial District Don Knabe	893,095
Fifth Supervisorial District Michael D. Antonovich	973,840
TOTAL	4,093,488

*Figure as of October 10, 2008.

HISTORICAL VOTER REGISTRATION AND VOTER TURNOUT INFORMATION PRESIDENTIAL AND GUBERNATORIAL PRIMARY AND GENERAL ELECTIONS

ELECTION	YEAR	REG	DEMOCRATIC	REPUBLICAN	AMERICAN INDEPENDENT	GREEN	LIBERTARIAN	NATURAL LAW	PEACE & FREEDOM	REFORM	MISC.	DECLINE TO STATE	TURNOUT	TURNOUT %
Statel Primary - 06/08		4,027,819	408,523 (57.46%)	212,499 (29.89%)	6,550 (92%)	2,947 (41%)	2,168 (30%)	N/A	1,001 (14%)	N/A	N/A	N/A	710,959	17.65%
Presidential Primary - 02/08		3,951,957	1,363,845 (69.06%)	551,722 (53.77%)	24,385 (35.46%)	8,035 (32%)	6,155 (33%)	N/A	3,776 (16%)	N/A	N/A	226,081 (27.98%)	2,183,998	55.26%
Gubernatorial General-11/06		3,899,397	1,944,597 (49.87%)	1,048,792 (26.90%)	64,736 (1.66%)	25,350 (65%)	18,207 (47%)	7,817 (20%)	23,579 (60%)	N/A	24,260 (62%)	742,059 (19.03%)	2,033,119	52.14%
Gubernatorial Primary-6/06		3,826,979	1,923,656 (32.56%)	1,023,910 (29.64%)	63,671 (13.45%)	25,349 (20%)	17,917 (20%)	7,957 (09%)	23,689 (08%)	N/A	N/A	100,194 (13.42%)	1,050,076	27.44%
Presidential General-11/04		3,972,738	2,016,280 (50.75%)	1,071,615 (26.97%)	67,091 (1.69%)	27,858 (70%)	18,952 (48%)	10,136 (26%)	28,654 (72%)	N/A	26,103 (66%)	706,049 (18.8%)	3,085,582	79.1%
Presidential Primary-3/04		3,670,157	1,872,335 (51.02%)	1,022,449 (27.86%)	60,131 (1.64%)	27,371 (75%)	18,307 (50%)	10,930 (30%)	30,744 (84%)	13,397 (34%)	25,492 (69%)	602,398 (16.41%)	1,379,747	37.59%
Gubernatorial General-11/02		3,962,831	2,071,424 (52.27%)	1,092,369 (27.57%)	68,461 (1.73%)	27,113 (68%)	20,584 (52%)	18,543 (47%)	N/A	16,087 (39%)	49,601 (1.23%)	602,319 (15.19%)	1,784,320	45.03%
Gubernatorial Primary-3/02		4,142,514	2,184,349 (62.75%)	1,135,585 (27.41%)	73,798 (1.78%)	26,947 (65%)	21,933 (53%)	22,424 (54%)	N/A	17,429 (43%)	47,231 (1.14%)	614,160 (14.88%)	1,070,651	25.85%
Presidential General-11/00		4,075,037	2,168,085 (53.20%)	1,132,380 (27.79%)	71,567 (7.76%)	24,014 (59%)	20,829 (51%)	23,796 (58%)	N/A	18,871 (50%)	38,415 (94%)	578,522 (14.20%)	2,769,927	67.97%
Presidential Primary-3/00		3,808,488	2,022,316 (53.10%)	1,070,759 (28.11%)	66,924 (1.76%)	20,767 (54%)	19,036 (50%)	25,775 (66%)	N/A	17,979 (47%)	38,651 (1.01%)	525,389 (13.80%)	1,836,153	48.21%
Gubernatorial General-11/98		3,854,826	2,079,930 (53.96%)	1,118,725 (29.02%)	64,088 (1.66%)	15,358 (40%)	17,680 (46%)	24,155 (63%)	23,168 (60%)	18,893 (50%)	14,368 (37%)	479,375 (12.44%)	2,058,862	53.41%
Gubernatorial Primary - 6/98		3,772,593	2,035,586 (53.96%)	1,106,879 (29.34%)	61,980 (1.64%)	14,623 (39%)	16,842 (44%)	25,427 (67%)	22,743 (60%)	21,635 (56%)	13,775 (37%)	456,045 (12.09%)	1,450,126	38.44%
Presidential General-11/96		3,857,805	2,084,994 (54.05%)	1,174,039 (30.43%)	59,759 (1.55%)	13,608 (35%)	15,848 (41%)	30,676 (80%)	22,389 (58%)	24,205 (67%)	13,855 (36%)	421,002 (10.91%)	2,505,790	64.95%
Presidential Primary-3/96		3,620,877	1,945,759 (53.74%)	1,130,664 (31.23%)	53,004 (1.46%)	12,108 (33%)	14,739 (41%)	35,921 (99%)	20,795 (57%)	N/A	11,815 (33%)	371,667 (10.27%)	1,346,358	37.18%
Gubernatorial General-11/94		3,665,868	2,037,899 (55.59%)	1,162,889 (31.72%)	49,158 (1.34%)	11,641 (32%)	14,854 (41%)	N/A	18,833 (51%)	N/A	11,942 (33%)	358,652 (9.78%)	2,147,678	58.58%
Gubernatorial Primary - 6/94		3,550,877	1,952,955 (55.00%)	1,135,792 (31.99%)	49,832 (1.40%)	12,180 (34%)	14,898 (42%)	19,791 (56%)	16,245 (48%)	16,555 (47%)	11,746 (33%)	353,682 (9.86%)	1,128,308	31.77%
Presidential General-11/92		3,744,096	2,061,025 (55.05%)	1,211,010 (32.34%)	50,511 (1.35%)	11,782 (31%)	15,468 (41%)	20,681 (55%)	16,555 (47%)	16,555 (47%)	12,483 (33%)	361,136 (9.65%)	2,881,077	75.61%
Presidential Primary-6/92		3,338,914	1,801,052 (53.94%)	1,152,096 (34.51%)	37,215 (1.11%)	11,346 (34%)	13,368 (40%)	19,763 (59%)	16,245 (48%)	16,245 (48%)	8,189 (25%)	295,885 (8.86%)	1,612,673	48.29%
Gubernatorial General-11/90		3,487,180	1,902,797 (54.57%)	1,233,739 (35.38%)	33,728 (9.7%)	33,078 (9.7%)	12,664 (36%)	N/A	15,162 (40%)	N/A	7,092 (19%)	279,133 (8.00%)	1,925,811	55.22%
Gubernatorial Primary - 6/90		3,402,509	1,867,425 (54.88%)	1,195,247 (35.13%)	33,078 (9.7%)	33,078 (9.7%)	12,086 (36%)	16,245 (48%)	16,245 (48%)	16,245 (48%)	7,439 (22%)	270,989 (7.96%)	1,283,079	37.70%
Presidential General-11/88		3,767,094	2,090,442 (55.49%)	1,314,490 (34.89%)	36,480 (9.7%)	13,042 (35%)	13,042 (35%)	15,162 (40%)	15,162 (40%)	15,162 (40%)	7,092 (19%)	290,366 (7.71%)	2,733,229	72.55%
Presidential Primary - 6/88		3,416,191	1,901,392 (55.66%)	1,186,728 (34.74%)	33,244 (9.7%)	33,244 (9.7%)	12,719 (37%)	14,951 (44%)	14,951 (44%)	14,951 (44%)	5,397 (16%)	261,760 (7.66%)	1,585,837	46.42%
Gubernatorial General-11/86		3,543,382	1,985,052 (55.46%)	1,249,160 (35.25%)	33,780 (9.5%)	33,780 (9.5%)	14,806 (42%)	13,880 (39%)	13,880 (39%)	13,880 (39%)	6,137 (17%)	260,567 (7.35%)	2,125,838	59.99%
Gubernatorial Primary - 6/86		3,385,207	1,898,052 (56.07%)	1,175,335 (34.72%)	32,331 (9.6%)	32,331 (9.6%)	14,686 (43%)	13,280 (39%)	13,280 (39%)	13,280 (39%)	6,243 (18%)	245,280 (7.25%)	1,307,146	38.61%
Presidential General-11/84		3,662,766	2,091,169 (57.09%)	1,229,333 (33.56%)	36,414 (9.9%)	36,414 (9.9%)	17,657 (48%)	13,652 (37%)	13,652 (37%)	13,652 (37%)	6,357 (17%)	268,184 (7.32%)	2,705,966	73.87%
Presidential Primary-6/84		3,236,714	1,879,697 (58.07%)	1,050,099 (32.44%)	31,955 (9.9%)	31,955 (9.9%)	17,558 (54%)	12,582 (39%)	12,582 (39%)	12,582 (39%)	6,401 (20%)	238,422 (7.37%)	1,595,801	49.30%
Gubernatorial General-11/82		3,300,239	1,928,193 (58.43%)	1,052,761 (31.90%)	32,578 (9.9%)	32,578 (9.9%)	21,220 (64%)	13,175 (40%)	13,175 (40%)	13,175 (40%)	6,718 (20%)	245,594 (7.44%)	2,301,004	69.72%
Gubernatorial Primary-6/82		3,070,961	1,784,313 (58.10%)	988,370 (32.18%)	29,824 (9.7%)	29,824 (9.7%)	20,553 (67%)	12,152 (40%)	12,152 (40%)	12,152 (40%)	6,664 (22%)	229,085 (7.46%)	1,626,332	52.95%
Presidential General-11/80		3,262,932	1,898,256 (58.18%)	1,053,861 (32.30%)	31,147 (9.5%)	31,147 (9.5%)	24,699 (76%)	12,087 (37%)	12,087 (37%)	12,087 (37%)	7,228 (22%)	235,654 (7.22%)	2,499,064	76.55%
Presidential Primary-6/80		2,986,846	1,757,445 (58.84%)	973,385 (32.59%)	22,465 (7.5%)	22,465 (7.5%)	17,657 (48%)	10,202 (34%)	10,202 (34%)	10,202 (34%)	6,335 (21%)	194,124 (6.50%)	1,916,680	64.17%
Gubernatorial General-11/78		3,090,768	1,869,113 (60.47%)	994,858 (32.19%)	17,167 (5.6%)	17,167 (5.6%)	22,870 (77%)	8,433 (27%)	8,433 (27%)	8,433 (27%)	8,399 (27%)	192,798 (6.24%)	2,122,733	68.67%
Gubernatorial Primary-6/78		2,888,324	1,733,404 (60.01%)	953,016 (33.00%)	14,706 (5.1%)	14,706 (5.1%)	7,274 (25%)	7,274 (25%)	7,274 (25%)	7,274 (25%)	7,178 (25%)	172,746 (5.98%)	2,140,054	74.09%
Presidential General-11/76		3,138,209	1,892,970 (60.32%)	1,029,522 (32.81%)	12,991 (4.1%)	12,991 (4.1%)	8,330 (27%)	8,330 (27%)	8,330 (27%)	8,330 (27%)	8,158 (26%)	186,238 (5.83%)	2,544,733	81.08%
Presidential Primary-6/76		2,787,431	1,666,225 (59.78%)	956,666 (34.42%)	8,553 (3.1%)	8,553 (3.1%)	6,441 (23%)	6,441 (23%)	6,441 (23%)	6,441 (23%)	7,230 (26%)	142,316 (5.10%)	1,985,851	71.24%
Gubernatorial General-11/74		3,286,898	1,925,811 (58.59%)	1,127,428 (34.30%)	13,615 (4.1%)	13,615 (4.1%)	13,970 (43%)	13,970 (43%)	13,970 (43%)	13,970 (43%)	14,266 (43%)	191,808 (5.84%)	2,057,794	62.60%
Gubernatorial Primary-6/74		3,197,078	1,854,824 (58.02%)	1,121,954 (35.09%)	13,645 (4.3%)	13,645 (4.3%)	14,087 (44%)	14,087 (44%)	14,087 (44%)	14,087 (44%)	15,036 (47%)	177,532 (5.55%)	1,652,878	51.89%
Presidential General-11/72		3,613,450	2,075,753 (57.40%)	1,288,728 (35.10%)	17,897 (5.0%)	17,897 (5.0%)	21,799 (60%)	21,799 (60%)	21,799 (60%)	21,799 (60%)	23,758 (70%)	205,515 (5.70%)	2,906,597	80.43%
Presidential Primary - 6/72		3,223,825	1,863,213 (57.80%)	1,145,172 (35.50%)	18,685 (6.0%)	18,685 (6.0%)	22,605 (70%)	22,605 (70%)	22,605 (70%)	22,605 (70%)	19,705 (60%)	154,445 (4.80%)	2,210,152	68.93%
Gubernatorial General-11/70		3,116,095	1,753,229 (56.26%)	1,193,254 (38.29%)	29,256 (9.4%)	29,256 (9.4%)	14,128 (45%)	14,128 (45%)	14,128 (45%)	14,128 (45%)	3,756 (12%)	122,472 (3.83%)	2,362,697	75.52%

**HISTORICAL VOTE BY MAIL (VBM) VOTER REQUESTS
PRESIDENTIAL AND GUBERNATORIAL PRIMARY AND GENERAL ELECTIONS
(1950 – 2008)**

Year	Primary Registration	# VBM Requests	%	General Registration	# VBM Requests	%
1952	2,253,548	24,167	1.07	2,510,666	86,025	3.34
1954	2,831,107	11,759	0.49	2,471,814	20,972	0.85
1956	2,276,763	17,630	0.77	2,683,731	65,227	2.43
1958	2,578,281	16,601	0.64	2,793,997	41,625	1.49
1960	2,548,971	17,802	0.70	3,001,379	92,508	3.08
1962	2,811,130	24,755	0.83	2,979,575	55,406	1.86
1964	2,701,286	36,470	1.35	3,137,194	106,477	3.39
1966	2,969,155	49,619	1.02	3,111,516	68,314	2.20
1968	2,909,410	49,888	1.71	3,130,692	110,972	3.55
1970	2,922,493	29,810	1.02	3,116,095	68,209	2.19
1972	3,223,825	71,846	2.23	3,163,450	128,365	3.55
1974	3,197,078	50,817	1.59	3,286,898	67,436	2.05
1976	2,077,431	75,898	3.65	3,138,209	114,703	3.65
1978	2,888,324	100,197	3.46	3,090,768	92,991	3.00
1980	2,985,492	107,414	3.59	3,262,932	155,901	4.77
1982	3,070,961	94,657	3.08	3,300,239	149,725	4.53
1984	3,236,714	136,286	4.21	3,662,766	298,847	8.16
1986	3,385,207	152,440	4.50	3,543,382	230,085	6.49
1988	3,416,191	193,191	5.65	3,767,094	357,935	9.50
1990	3,402,509	235,640	6.92	3,487,180	363,894	10.43
1992	3,338,914	303,981	9.10	3,744,096	452,825	12.09
1994	3,550,877	260,740	7.34	3,665,868	466,400	12.72
1996	3,620,677	342,657	9.46	3,857,805	486,116	12.60
1998	3,772,593	375,257	9.95	3,854,826	506,114	13.13
2000	3,808,488	414,722	10.89	4,075,037	635,143	15.59
2002	4,142,514	369,653	8.92	3,962,831	464,856	11.73
2004	3,670,157	444,751	12.12	3,972,738	816,637	20.56
2006	3,826,979	552,302	14.43	3,899,397	695,020	17.82
2008	Feb 3,951,957 June 4,027,819	721,352 643,285				

**HISTORICAL VOTE BY MAIL (VBM) BALLOTS CAST INFORMATION
PRESIDENTIAL AND GUBERNATORIAL PRIMARY AND GENERAL ELECTIONS
(1966 – 2008)**

Year	Primary Ballots Cast	VBM Ballots Cast	% VBM Ballots Cast	Year	General Ballots Cast	VBM Ballots Cast	% VBM Ballots Cast
1966	1,904,321	25,868	1.36	1966	2,475,142	59,087	2.39
1968	2,075,661	37,951	1.83	1968	2,700,170	92,878	3.44
1970	1,792,201	25,047	1.40	1970	2,352,697	56,622	2.41
1972	2,210,152	57,428	2.60	1972	2,906,597	110,613	3.81
1974	1,652,878	42,703	2.58	1974	2,057,734	58,357	2.84
1976	1,985,851	68,026	3.43	1976	2,544,733	87,930	3.46
1978	2,140,054	88,227	4.12	1978	2,122,733	76,086	3.58
1980	1,916,660	89,019	4.64	1980	2,498,064	131,776	5.28
1982	1,626,332	70,069	4.31	1982	2,301,004	122,502	5.32
1984	1,595,801	98,682	6.18	1984	2,705,966	230,997	8.54
1986	1,307,146	110,223	8.43	1986	2,125,838	177,251	8.34
1988	1,585,837	141,042	8.89	1988	2,733,229	279,931	10.24
1990	1,283,079	177,295	13.82	1990	1,925,811	270,645	14.05
1992	1,612,673	226,310	14.03	1992	2,831,077	388,795	13.73
1994	1,128,308	197,824	17.53	1994	2,147,678	372,677	17.35
1996	1,346,358	257,359	19.12	1996	2,505,790	396,033	15.80
1998	1,450,126	285,532	19.69	1998	2,058,862	407,776	19.81
2000	1,836,153	316,882	17.26	2000	2,769,927	543,143	19.61
2002	1,070,651	218,976	20.45	2002	1,784,320	359,682	20.16
2004	1,379,747	330,353	23.94	2004	3,085,582	701,693	22.74
2006	1,050,076	314,824	27.44	2006	2,033,119	531,383	26.13
2008	2,183,998	482,921	22.11	2008			

VOTE BY MAIL BALLOT COUNTING - TIMES WHEN COUNTED

The following chart provides the number of vote by mail ballots counted beginning election day and the number processed and updated during the official canvass period.

2002 GENERAL ELECTION		2004 GENERAL ELECTION		2006 GENERAL ELECTION	
DATE	# VOTE BY MAIL BALLOTS COUNTED	DATE	# VOTE BY MAIL BALLOTS COUNTED	DATE	# VOTE BY MAIL BALLOTS COUNTED
11/05	246,063	11/02	564,156	11/07	370,825
11/08	57,144	11/09	95,724	11/10	73,565
11/12	48,271	11/12	20,283	11/14	63,271
11/15	3,947	11/16	9,255	11/17	11,878
11/19	3,054	11/19	6,024	11/21	6,285
11/22	1,125	11/23	4,904	11/27	4,582
11/26	78	11/26	1,347	11/29	397
				12/01	579
	359,682		701,693		531,383

SPEED OF BALLOT COUNTING ELECTION NIGHT – HISTORICAL TRENDS

The following chart provides statistical information on the speed of ballot tabulation from midnight onward.

2002 GENERAL ELECTION			2004 GENERAL ELECTION			2006 GENERAL ELECTION		
TIME	BALLOTS COUNTED	%	TIME	BALLOTS COUNTED	%	TIME	BALLOTS COUNTED	%
Midnight	1,100,541	63.53	Midnight	1,579,853	50.20	Midnight	1,198,021	59.67
12:31 am	1,318,016	79.26	12:40 am	1,971,556	67.51	12:40 am	1,362,916	71.58
12:51 am	1,403,045	85.09	1:00 am	2,180,626	77.12	1:00 am	1,468,861	78.94
1:11 am	1,485,250	90.47	1:20 am	2,393,902	86.38	1:20 am	1,598,003	87.65
1:31 am	1,571,151	95.88	1:40 am	2,541,224	92.68	1:40 am	1,697,173	94.69
1:51 am	1,601,206	97.85	2:00 am	2,629,632	96.46	3:00 am	1,760,232	99.48
2:11 am	1,627,585	99.65	2:20 am	2,672,488	98.37	4:00 am	1,762,547	100.00
2:32 am	1,632,352	99.94	2:40 am	2,704,220	99.72			
4:01 am	1,632,957	100.00	3:06 am	2,708,586	99.91			
			4:13 am	2,701,280	100.00			

PROVISIONAL BALLOTS

The following chart provides the number of provisional ballots received and the number determined eligible and ineligible. Provisional ballots are not opened or counted until the registration information is researched and the voter is determined to be eligible to vote. This research occurs during the days immediately following election day as part of the official vote canvass. Eligible ballots are added to the count during the canvass period.

ELECTION	NUMBER OF PROVISIONALS	NUMBER ELIGIBLE	%	NUMBER INELIGIBLE	%
2000 GENERAL	100,168	61,521	61%	38,647	39%
2002 PRIMARY	21,006	13,327	63%	7,679	37%
2002 GENERAL	46,906	32,441	70%	14,465	30%
2003 STATEWIDE RECALL	121,595	106,085	87%	15,510	13%
*2004 PRIMARY	44,232	40,686	92%	3,546	8%
2004 GENERAL	204,578	166,894	82%	37,684	18%
2005 STATEWIDE SPECIAL	72,726	64,337	88%	8,389	11%
2006 PRIMARY	39,308	36,501	93%	2,807	7%
2006 GENERAL	108,457	92,194	85%	16,263	15%
2008 PRIMARY	Feb 176,479	153,536	87%	22,943	13%
	June 25,333	23,560	93%	1,773	7%

*The law changed in January 2003, requiring counting the contests/measures on the provisional ballots that the requested voter was eligible to vote upon. As a result, the number percentage of provisional ballots counted has increased significantly.

ELECTION COSTS

Listed below are the total costs (including overhead) of conducting major elections in Los Angeles County.

PRIMARY ELECTIONS		GENERAL ELECTIONS	
YEAR	COST	YEAR	COST
1998	\$12,912,363	1998	\$14,250,919
2000	\$15,484,647	2000	\$20,891,000
2002	\$22,692,890	2002	\$25,529,188
2004	\$23,327,337	2004	\$24,080,984
2006	\$27,878,209	2006	\$28,811,229
2008	Feb \$25,958,149	2008	
	June \$25,959,414		

PREPARING FOR THE ELECTION

PRECINCT OFFICERS AND POLLING PLACES

Polling Places	4,394
Precinct Officers	25,000+

Polling places will be open from 7:00 a.m. to 8:00 p.m.

WANTED: 25,000+ DEDICATED, COMMITTED VOTERS TO WORK FROM 6:30 A.M. UNTIL 9 P.M., OR LATER, ON ELECTION DAY PAY \$80.00. CALL (800) 815-2666, Option #7

The Challenge - The November 4, 2008 General Election involves 4,394 polling places which require 25,000+ volunteers to staff them. Although our Polls Section staff swells to 100 at busy election times, the task of recruiting pollworkers and substitutes, and finding poll sites is monumental. Fortunately, we can depend on many experienced pollworkers who have served for decades. However, less than half the pool of experienced pollworkers continues their service from one election to another. The chronic shortage of pollworkers, many of them retirees uncomfortable with new technology, creates an additional training challenge since the department implemented the new InkaVote Plus voting system.

Our Polls Section staff work 10 to 12 hour days during the months leading up to a major countywide election. On Election Day, staff report to work at 5:30 a.m. to begin receiving calls regarding "problem" polls (poll worker cancellations, insufficient supplies, etc.).

Problem Recruitment Areas - Recruitment is especially difficult in the Beverly Hills, Canyon Country, Castaic, Encino, Lomita, Los Angeles (90045), Los Angeles (City), Pacific Palisades, Playa Del Rey, Rancho Palos Verde, Santa Monica, Saugus, Sherman Oaks, Valencia, Venice, Winnetka and Woodland Hills. However, new officers are needed in all parts of the County to replenish the pool of retired officers.

Shortage of Bilingual Pollworkers - To serve Los Angeles County's diverse population there is always a need for more bilingual precinct officers, especially those who speak Japanese, Korean and Vietnamese. Our office partners with organizations including CAUSE, the Korean Resource Center, Asian Pacific American Legal Center, Little Tokyo Service Center and the National Association of Latino Elected Officials (NALEO) who help to identify and recruit bilingual pollworkers.

Training and Appreciation - Our training section conducts approximately 500 interactive training classes throughout the County in the four weeks preceding each major election. Classes for the November 4, 2008 General Election feature the following training videos: "InkaVote Plus", "Ballot Inspection at the Polls", and "Perfect Polling Place" which focuses on the basics of the Election Day hour by hour including setting up the polls, processing voters, using the InkaVote system and closing the polls. These training videos enhance the ability and awareness of pollworkers. Thanks to the partnership with all County libraries, these videos are available at each reference desk for interested pollworkers who cannot attend training. Copies are provided in the elections supplies picked-up by each precinct Inspector the week before the election. Inspectors are encouraged to contact their precinct board members and share the videos. Copies are also available on the Registrar-Recorder/County Clerk website www.lavote.net.

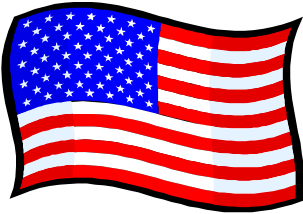
SAMPLE BALLOT BOOKLET

Unlike most states, California voters have been receiving sample ballot booklets in the mail prior to every election since 1962. Sample ballots provide a mirror image of the ballot, polling place address, application for a vote by mail ballot and also include candidate statements and other useful information in preparation for voting.

Voters are encouraged to mark their voting choices in their sample ballots prior to going to their poll to speed the voting process.

The application for a Vote by Mail ballot is included on the back cover of each sample ballot booklet. The back cover is also where the voter can find the polling place address and describes, using the universal graphic, whether or not the polling place is accessible for voters in wheelchairs.

NEW CITIZEN VOTING PROCEDURES



The Registrar-Recorder/County Clerk encourages United States Citizens to register to vote and actively take part in choosing their government representatives by voting for the candidates/issues of their choice.

Persons who became citizens prior to the voter registration deadline and who are at least 18 years old by the next election may complete a registration-by-mail form provided to them after their naturalization swearing-in ceremony and mail or deliver it to the Registrar-Recorder/County Clerk.

Persons who become citizens after the voter registration deadline may register and vote at the Registrar's Office between the 14th and 7th day before the upcoming election. Such new citizen late registrants must present a Certificate of Naturalization and declare they have established residency in the County.

In compliance with federal law, Los Angeles County prints certain election materials in Chinese, Japanese, Korean, Spanish, Tagalog/Filipino, and Vietnamese. Voters may request multilingual materials by contacting the Registrar's Office before an election at (800) 481-VOTE (8683).

WHAT'S ON THE BALLOT?

QUALIFICATIONS AND TERMS OF OFFICE

<u>OFFICE</u>	<u>QUALIFICATIONS</u>	<u>TERM</u>
President	Natural born citizen of the United States at least 35 years of age and a resident of the United States for at least 14 years.	4 years beginning January 20, 2009.
United States Representative	25 years of age or older and a citizen of the United States for at least 7 years and an inhabitant of the state at the time of the general election.	2 years beginning at noon on January 2, 2009.
State Senator	A citizen of the United States, a registered voter and otherwise qualified to vote for that office at the time that nomination papers are issued.	4 years beginning December 1, 2008.
Member of the State Assembly	A citizen of the United States, a registered voter and otherwise qualified to vote for that office at the time that nomination papers are issued.	2 years beginning December 1, 2008.
Judge of the Superior Court	Must have been a member of the State Bar or served as a judge of a court of record in the State 10 years immediately preceding selection to Superior Court.	6 years beginning January 2, 2009.
District Attorney	A registered voter of the jurisdiction at the time nomination documents are issued. Must have been admitted to practice before the California Supreme Court.	4 years beginning at noon on December 1, 2008.
Member, Board of Supervisors	A registered voter of the district for at least 30 days prior to deadline to file nomination documents.	4 years beginning December 1, 2008.
Director-Health Care District	Each director shall be a registered voter of the district at the time nomination documents are issued.	4 years beginning at noon December 5, 2008.
Director-Municipal Water District	Each director shall be a registered voter of the division at the time nomination documents are issued.	4 years beginning at noon on January 5, 2009.
Director-Recreation and Park District	Each director shall be a registered voter of the district at the time nomination documents are issued.	4 years beginning at noon on December 5, 2008.
Director-Water Agency Antelope Valley-East Kern	Each director shall be a registered voter of the division at the time nomination documents are issued.	4 years beginning at noon on January 5, 2009.

QUALIFICATIONS AND TERMS OF OFFICE (Cont'd)

Director-Water Agency Castaic Lake	Each director shall be a registered voter of the division at the time nomination documents are issued. Each director at large shall be a registered voter of the agency.	4 years beginning at noon on January 5, 2009.
Director-Water Replenishment District	Each director shall be a registered voter of the division at the time nomination documents are issued.	4 years beginning at noon on January 5, 2009.
Governing Board Member-School and Community College Districts	A registered voter of the district or trustee area, if applicable, at the time nomination documents are issued.	4 years beginning on December 5, 2008.

VOTES REQUIRED TO ELECT CANDIDATES

Partisan Offices	The candidate from each party receiving the highest number of votes at a primary election is the nominee for the general election. The candidate receiving the highest number of votes in a general election is elected to fill the office. (Elec. Code Sec. 15451)
Non-Partisan Offices (County and Judicial)	A majority of votes cast (50 percent plus one vote) is required to elect a candidate in a primary election. When a candidate is elected in the primary election, the office shall not appear on the ballot for the general election. If no candidate receives a majority of votes cast, the two candidates receiving the highest number of votes are placed on the ballot for a runoff in the general election. (Elec. Code Sec. 8140 & 8141)
County Central Committees, County Council and some Non-Partisan Offices (City and Miscellaneous Districts)	The candidate receiving the highest number of votes is elected to the office. If two or more candidates are to be elected, those candidates equal in number to the number to be elected, receiving the highest number of votes, are elected. (Elec. Code Sec. 8144, 10551 & 10600)
Write-in Candidates For Partisan Office	To appear on the ballot for the general election, a qualified write-in candidate must receive the highest number of votes at the primary election for that office and receive not less than 1% of the votes cast for the office at the last preceding general election in which the office was filled. (Elec. Code Sec. 8605)

SUMMARY OF MEASURES, CANDIDATES AND OFFICES ON THE BALLOT

One hundred twenty eight jurisdictions are participating in the November 4, 2008 Presidential General Election being conducted by the Los Angeles County Registrar-Recorder/County Clerk's Office. Contests include the federal government, state, county, six cities, five judicial districts, two community college districts, two unified school districts, five municipal water districts, seven water agencies, one health care district, one water replenishment district, four community college districts and three school districts.

The following chart summarizes the number of measures, candidates and offices involved in this election:

JURISDICTION	NUMBER OF MEASURES	CANDIDATES FOR ELECTION	NUMBER OF OFFICES
Federal	0	43	19
State	12	75	33
County	2	2	1
Cities	22	55	14
Judicial District	0	10	5
School Districts	15	13	3
Municipal Water Districts	0	24	5
Water Agencies	0	15	7
Health Care District	0	4	1
Sanitation District	1	6	2
Water Replenish District	0	6	2
Community College Districts	4	10	4
High School District	4	0	0
TOTAL	60	257	94

SUMMARY OF PARTISAN CANDIDATES ON BALLOT

NUMBER OF CANDIDATES

OFFICE	DEM	REP	AI	GRN	LIB	N/L	P/F	TOTAL
President	1	1	1	1	1	0	1	6
United States Representatives (Districts 22, 25-39, 42, 46)	17	12	1	1	6	0	0	37
State Senator (Districts 17-29; Odd Numbered Only)	7	7	0	0	3	0	0	17
Member of the Assembly (Districts 36-61)	26	24	0	1	6	0	1	58
Total Number Partisan Candidates	51	44	2	3	16	0	2	118

CANDIDATES, VOTING PRECINCTS, AND REGISTRATION BY PARTISAN OFFICE

<u>OFFICE</u>	<u>CANDIDATES</u>	<u>VOTING PRECINCTS</u>	<u>REGISTRATION*</u>
President	6	4,394	4,093,488
United States Representative	37	4,394	4,093,488
<u>District #</u>			
22**	1	36	34,068
25**	2	278	236,412
26**	3	241	215,758
27	3	279	278,818
28	1	250	227,688
29	3	308	290,236
30	1	422	385,246
31	1	201	177,480
32	1	258	228,400
33	2	288	278,697
34	2	204	185,412
35	3	268	240,249
36	2	353	313,939
37	2	293	256,276
38	2	251	235,282
39	2	285	247,254
42**	2	65	64,504
46**	4	114	105,138
State Senator			
<u>District #</u>			
17**	2	328	291,588
19**	2	42	35,359
21	3	450	409,875
23**	3	430	390,354
25	2	391	346,620
27	2	393	351,946
29**	3	270	250,140

*Figures as of October 10, 2008. Final registration figures are scheduled to be available approximately one week after the October 20, 2008 voter registration deadline.

**Shared District

<u>OFFICE</u>	<u>CANDIDATES</u>	<u>VOTING PRECINCTS</u>	<u>REGISTRATION*</u>
Member of the State Assembly			
<u>District #</u>			
36**	2	151	134,252
37**	2	44	36,373
38**	2	223	201,067
39	3	118	117,125
40	3	164	169,245
41**	2	205	183,750
42	2	276	247,050
43	2	195	186,328
44	3	245	217,150
45	2	148	131,357
46	2	106	97,339
47	2	215	209,516
48	2	138	132,488
49	2	173	148,502
50	1	143	126,608
51	3	193	165,470
52	2	150	132,831
53	2	265	237,699
54	3	236	217,823
55	2	209	171,482
56**	2	157	141,562
57	2	177	161,170
58	2	192	175,622
59**	3	130	121,521
60**	2	95	92,290
61**	3	46	45,237

*Figures as of October 10, 2008. Final registration figures are scheduled to be available approximately one week after the October 20, 2008 voter registration deadline.

**Shared District

SUMMARY OF NON-PARTISAN CANDIDATES ON BALLOT

OFFICE	NUMBER OF CANDIDATES
Judge of the Superior Court	10
Board of Supervisors	2
City Council	44
Mayor	8
Member, Governing Board	15
Member, Board of Education	4
Member, Rent Control Board	3
Member, Board of Trustees	4
Member, Water Board of Directors	45
Member, Health Board of Directors	4
Total	139

CANDIDATES, VOTING PRECINCTS, AND REGISTRATION BY NON-PARTISAN OFFICE

<u>OFFICE</u>	<u>CANDIDATES</u>	<u>VOTING PRECINCTS</u>	<u>REGISTRATION*</u>
Judge of the Superior Court			
<u>Office #</u>			
72	2	4,394	4,093,488
82	2	4,394	4,093,488
84	2	4,394	4,093,488
94	2	4,394	4,093,488
154	2	4,394	4,093,488
Board of Supervisors			
Los Angeles County			
<u>District #</u>			
2	2	787	708,755
City Council			
Alhambra			
<u>District #</u>			
3	1	37	33,000
4	2	37	33,000
City of Commerce Special Recall			
Candidate to succeed Tina Del Rio if recalled	2	7	5,391
Candidate to succeed Robert Fierro if recalled	3	7	5,391
Downey			
<u>District #</u>			
1	1	10	8,181
3	2	13	11,101
5	4	46	44,316

*Figures as of October 10, 2008. Final registration figures are scheduled to be available approximately one week after the October 20, 2008 voter registration deadline.

<u>OFFICE</u>	<u>CANDIDATES</u>	<u>VOTING PRECINCTS</u>	<u>REGISTRATION*</u>
Gardena (Unexpired Term)	4	28	23,721
Pomona <u>District #</u>			
1	4	7	6,461
4	3	8	8,106
6	4	12	10,944
Santa Monica	13	53	56,907
Rent Control Board Santa Monica	3	53	56,907
Board of Education Santa Monica-Malibu Unified	4	70	68,224
Mayor Pomona	8	46	45,166
Governing Board Member North Orange County Community College <u>Trustee#</u>			
1	2	13	10,892
3	1	13	10,892
4	3	13	10,892
Manhattan Beach Unified School District Special Recall Election Candidates if Bill Eisen is recalled	1	27	23,340
Snowline Joint Unified School District	5	**5 **Vote by Mail	97
Lowell Joint School District	4	12	10,712
Board of Trustees Santa Monica Community College District	4	70	68,142
Board of Directors Antelope Valley-East Kern Water Agency <u>Division #</u>			
4	2	21	21,224
6	2	15	13,129
7	2	15	12,461
Beach Cities Health District	4	88	73,296

*Figures as of October 10, 2008. Final registration figures are scheduled to be available approximately one week after the October 20, 2008 voter registration deadline. **Shared District

<u>OFFICE</u>	<u>CANDIDATES</u>	<u>VOTING PRECINCTS</u>	<u>REGISTRATION*</u>
Board of Directors Antelope Valley-East Kern Water Agency			
<u>Division #</u>			
4	2	21	21,224
6	2	15	13,129
7	2	15	12,461
Beach Cities Health District	4	88	73,296
Castaic Lake Water Agency Board of Directors At Large			
<u>Division #</u>			
1	2	41	34,717
2	2	48	40,249
3**	2	52	40,746
Central Basin Municipal Water District			
<u>Division #</u>			
1	2	124	117,266
4	2	114	90,126
5	2	151	128,140
San Gabriel Valley Municipal Water District			
<u>Division #</u>			
3	2	24	20,753
Three Valleys Municipal Water District			
<u>Division #</u>			
6	2	28	26,772
Upper San Gabriel Valley Municipal Water District			
<u>Division #</u>			
2	4	90	74,275
3	3	70	64,119
4	3	79	68,612
Water Replenishment District of Southern California			
<u>Division #</u>			
2	2	407	354,894
5	4	337	296,189
West Basin Municipal Water District			
<u>Division #</u>			
3	2	115	97,960
5	2	79	66,192

*Figures as of October 10, 2008. Final registration figures are scheduled to be available approximately one week after the October 20, 2008 voter registration deadline. **Shared District

ROTATION OF NAMES

As required by state law, names of candidates for certain offices are rotated on the ballot as follows:

OFFICE	ROTATION
President	Candidates' names are arranged in accordance with the alphabetical drawing beginning with the first Assembly District in the state. Thereafter, for each succeeding Assembly District, the candidate's name appearing first is placed last; the order of the other names remains unchanged.
United States Representative	Candidates' names are arranged in accordance with the alphabetical drawing beginning with the lowest numbered Assembly District in the Congressional or Board of Equalization District. Thereafter, for each succeeding Assembly District, the candidates' name appearing first is placed last; the order of the other names remains unchanged.
Superior Court Judge and District Attorney	Candidates' names are arranged in accordance with the alphabetical drawing beginning with the lowest numbered Assembly District in the County. Thereafter, for each succeeding Assembly District, the candidates' name appearing first is placed last; the order of the other names remains unchanged.
Other Offices	No rotation.

PLACEMENT AND ROTATION OF CANDIDATES' NAMES ON BALLOT

Placement of Names

The placement of names on the ballot is determined by a random alphabetical drawing which was held by the Secretary of State and Registrar-Recorder/County Clerk on August 14, 2008.

“WHO’S ON FIRST?” (CANDIDATE ORDER)



The order in which candidates' names appear on the ballot is determined by a random drawing of the 26 letters of the alphabet. This random (“pulled out of a hat”) alphabetical drawing is conducted by the Secretary of State and the Registrar-Recorder/County Clerk prior to each election.

YOUR BALLOT

CANDIDATE S HEA Veterinarian	500
CANDIDATE V ENTURA Museum Curator	501
CANDIDATE D RUGAN Chef	502
CANDIDATE K LERKS Graphic Artist	503

Election law also requires the names of candidates for some offices to change positions, such as federal and statewide offices (i.e., President, State Assembly Member).

The purpose of the rotation is so one candidate's name does not always appear first, or last, on all of the ballots for the races.

YOUR COUSIN'S BALLOT

CANDIDATE V ENTURA Museum Curator	500
CANDIDATE D RUGAN Chef	501
CANDIDATE K LERKS Graphic Artist	502
CANDIDATE S HEA Veterinarian	503

YOUR FRIEND'S BALLOT

CANDIDATE D RUGAN Chef	500
CANDIDATE K LERKS Graphic Artist	501
CANDIDATE S HEA Veterinarian	502
CANDIDATE V ENTURA Museum Curator	503

YOUR CO-WORKER'S BALLOT

CANDIDATE K LERKS Graphic Artist	500
CANDIDATE S HEA Veterinarian	501
CANDIDATE V ENTURA Museum Curator	502
CANDIDATE D RUGAN Chef	503

MEASURES APPEARING ON BALLOT

**VOTES
REQUIRED**

STATE MEASURES (Registration: 4,021,954*)

- 1A Safe, Reliable High-Speed Passenger Train Bond Act. MAJORITY**
To provide Californians a safe, convenient, affordable, and reliable alternative to driving and high gas prices; to provide good-paying jobs and improve California’s economy while reducing air pollution. Global warming greenhouse gases, and our dependence on foreign oil, shall \$9.95 billion in bonds be issued to establish a clean, efficient high-speed train service linking Southern California, the Sacramento/San Joaquin Valley, and the San Francisco Bay Area, with at least 90 percent of bond funds spent for specific projects, with private and public matching funds required, including, but not limited to, federal funds, funds from revenue bonds, and local funds, and all bond funds subject to independent audits? Fiscal Impact: State cost of \$19.4 billion, assuming 30 years to pay both principal and interest costs of the bonds. Payments would average about \$647 million per year. When constructed, unknown operation and maintenance costs, probably over \$1 billion annually; at least partially, and potentially fully, offset by passenger fares.
- 2 Standards for Confining Farm Animals. Initiative Statute. MAJORITY**
Requires that certain farm animals be allowed, for the majority of every day, to fully extend their limbs or wings, lie down, stand up and turn around. Limited exceptions apply. Fiscal Impact: Potential unknown decrease in state and local tax revenues from farm businesses, possibly in the range of several million dollars annually. Potential minor local and state enforcement and prosecution costs, partly offset by increased fine revenue.
- 3 Children’s Hospital Bond Act. Grant Program. Initiative Statute. MAJORITY**
Authorizes \$980,000,000 in general obligation bonds for construction, expansion, remodeling, renovation, furnishings and equipping of eligible children’s hospitals. Fiscal Impact: State cost of about \$2 billion over 30 years to pay off both the principal (\$980 million) and interest (\$933 million) costs of the bonds. Payments of about \$64 million per year.
- 4 Waiting Period And Parental Notification Before Termination Of Minor’s Pregnancy. Initiative Constitutional Amendment. MAJORITY**
Shall the California Constitution be changed to prohibit abortion for an unemancipated minor until 48 hours after physician notifies minor’s parent, legal guardian, or, in limited cases, substitute adult relative?
- 5 Nonviolent Drug Offenses, Sentencing, Parole and Rehabilitation. Initiative Statute. MAJORITY**
Shall \$460,000,000 be allocated annually to improve and expand treatment programs?

*Figure as of October 10, 2008. Final registration figures are scheduled to be available after October 20.

STATE MEASURES	VOTES REQUIRED
<p>6 Police And Law Enforcement Funding. Criminal Penalties and Laws. Initiative Statute. Shall a minimum of \$965,000,000 of state funding be required each year for police and local law enforcement?</p>	MAJORITY
<p>7 Renewable Energy Generation. Initiative Statute. Requires government-owned utilities to generate 20% of their electricity from renewable energy by 2010, a standard currently applicable to private electrical corporations. Raises requirement for all utilities to 40% by 2020 and 50% by 2025. Fiscal Impact: Increased state administrative costs up to \$3.4 million annually, paid by fees. Unknown impact on state and local government costs and revenues due to the measure's uncertain impact on retail electricity rates.</p>	MAJORITY
<p>8 Eliminates Right of Same-Sex Couples to Marry. Initiative Constitutional Amendment. Changes California Constitution to eliminate the right of same-sex couples to marry. Provides that only marriage between a man and a woman is valid or recognized in California. Fiscal Impact: Over next few years, potential revenue loss, mainly sales taxes, totaling in the several tens of millions of dollars, to state and local governments. In the long run, likely little fiscal impact on state and local governments.</p>	MAJORITY
<p>9 Criminal Justice System. Victims' Rights. Parole. Initiative Constitutional Amendment and Statute. Requires notification to victim and opportunity for input during phases of criminal justice process, including bail, pleas, sentencing and parole. Establishes victim safety as consideration for bail or parole. Fiscal Impact: Potential loss of state savings on prison operations and increased county jail costs amounting to hundreds of millions of dollars annually. Potential net savings in the low tens of millions of dollars annually on parole procedures.</p>	MAJORITY
<p>10 Alternative Fuel Vehicles and Renewable Energy. Bonds. Initiative Statute. Authorizes \$5 billion in bonds paid from state's General Fund, to help consumers and others purchase certain vehicles, and to fund research in renewable energy alternative fuel vehicles. Fiscal Impact: State cost of about \$10 billion over 30 years to repay bonds. Increased state and local revenues, potentially totaling several tens of millions of dollars through 2019. Potential state administrative costs up to about \$10 million annually.</p>	MAJORITY

*Figure as of October 10, 2008. Final registration figures are scheduled to be available after October 20.

STATE MEASURES

**VOTES
REQUIRED**

11 Redistricting. Initiative Constitutional Amendment and Statute. Changes authority for establishing state office boundaries from elected representatives to commission. Establishes multilevel process to select commissioners from registered voter pool. Commission comprised of Democrats, Republicans, and representative of neither party. Fiscal Impact: Potential increase in state redistricting costs once every ten years due to two entities performing redistricting. Any increase in costs probably would not be significant.

MAJORITY

12 Veterans' Bond Act of 2008. This act provides for a bond issue of nine hundred million dollars (\$900,000,000) to provide farm and home aid for California veterans. Fiscal Impact: Costs of about \$1.8 billion to pay off both the principal (\$900 million) and interest (\$856 million) on the bonds; costs paid by participating veterans. Average payment for principal and interest of about \$59 million per year for 30 years.

MAJORITY

COUNTY MEASURES

**VOTES
REQUIRED**

LOS ANGELES COUNTY METROPOLITAN TRANSPORTATION

R

Traffic Relief. Rail Extensions. Reduce Foreign Oil Dependence.
To: Synchronize traffic signals; Repair potholes; Extend light rail with airport connections; Improve freeway traffic flow (5, 10, 14, 60, 110, 138, 210, 405, 605, 710); Keep senior/student/disabled fares low; Provide clean-fuel buses; Expand subway/Metrolink/bus service; Dedicate millions for community traffic-relief; Shall Los Angeles County's sales tax increase one-half cent for 30 years with independent audits, public review of expenditures, all locally controlled?

**2/3 OF
VOTES
CAST**

UNINCORPORATED LOS ANGELES COUNTY UTILITY USER TAX

U

The Unincorporated Los Angeles County Utility Users' Tax Continuation Measure.
Shall an ordinance be adopted to validate and reduce Los Angeles County's existing utility users tax from 5 percent to 4.5 percent; to continue funding essential services, including sheriff's deputies, parks, libraries, street repairs, and other general fund services; update definitions to require equal treatment of taxpayers regardless of technology used; provide public review of expenditures and independent audits, and continue the low-income senior exemption?

MAJORITY

*Figure as of October 10, 2008. Final registration figures are scheduled to be available after October 20.

LOCAL MEASURES

**VOTES
REQUIRED**

ACTON-AGUA DULCE UNIFIED SCHOOL DISTRICT (Registration: *7,383)

CF To acquire, construct and improve high school facilities, shall the Acton-Agua Dulce Unified School District be authorized to replace portables with permanent high school classrooms and facilities, construct additional classrooms, including science labs, and qualify for approximately \$9,500,000 in State matching funds by issuing up to \$13,000,000 in bonds at interest rates within legal limits, with annual audits, a citizens' oversight committee, and no money for administrator salaries?

**55% OF
VOTES
CAST**

ALHAMBRA ELEMENTARY SCHOOLS IMPROVEMENT DISTRICT (Registration: *64,231)

MM ALHAMBRA UNIFIED NEIGHBORHOOD ELEMENTARY SCHOOL HEALTH, SAFETY AND REPAIR MEASURE. To improve local elementary education, repair, upgrade outdated classrooms, plumbing, roofing, lighting, electrical systems, libraries, upgrade safety, security, fire systems, remove hazardous materials, replace temporary classrooms with permanent classrooms, earthquake-retrofit classrooms, renovate, acquire, construct, repair, equip classrooms, school, science labs, sites, facilities, shall Alhambra Unified School District Elementary School Improvement District issue \$50,000,000 of bonds at legal rates, citizens' oversight, independent audits?

**55% OF
VOTES
CAST**

BEVERLY HILLS CITY (Registration: *20,883)

H Shall Resolution No. 08-R-12601, entitled "Resolution of the Council of the City of Beverly Hills amending the General Plan to enable the revitalization of the Beverly Hilton Hotel site with a new Luxury Hotel, Condominiums, and Open Space," be adopted?

MAJORITY

BEVERLY HILLS UNIFIED SCHOOL DISTRICT (Registration: *20,909)

E To provide safe and modernized school facilities, make necessary structural seismic safety repairs, upgrade, repair, and reconstruct aging classrooms, infrastructure, multiuse, gyms, libraries, science, technology & labs; roofing, plumbing, heating, ventilation and electrical systems; renovate Beverly Hills Unified School District schools to better protect student/staff from unauthorized entry, security risks, and natural disasters; shall Beverly Hills Unified School District issue \$334 million in bonds with legal interest rates subject to mandatory audits, independent citizens' oversight without an estimated increase in tax rates?

**55% OF
VOTES
CAST**

*Figure as of October 10, 2008. Final registration figures are scheduled to be available after October 20.

LOCAL MEASURES

**VOTES
REQUIRED**

BONITA UNIFIED SCHOOL DISTRICT (Registration: *35,703)

AB BONITA SCHOOLS BUILDING FOR STUDENT SUCCESS IMPROVEMENT MEASURE. To provide a healthy learning environment, improve student health and safety, shall Bonita Unified School District issue \$83,560,000 in bonds at legal rates to construct, improve, equip schools, technology, water and electrical, utilities, HVAC and solar energy systems, multipurpose classrooms, grounds, fields and facilities, including upgrading gyms, equipment, and non-compliant tracks, and completing necessary upgrades to athletic facilities, with mandatory audits, independent citizen oversight, and no money for administrators' salaries?

55% OF
VOTES
CAST

CENTINELA VALLEY UNION HIGH SCHOOL DISTRICT (Registration: *52,764)

CV CENTINELA HIGH SCHOOLS IMPROVEMENT MEASURE. To improve the quality of education/student safety/reduce overcrowding, shall Centinela Valley Union High School District issue \$98,000,000 in bonds, at legal rates, to repair/acquire/construct local schools, sites, facilities, libraries, classrooms, science/computer labs, ensure earthquake safety, remove mold/asbestos, upgrade fire safety/security systems, leaky roofs, restrooms, plumbing/electrical/heating/cooling systems, with citizens' oversight, independent annual audits, no money for administrators' salaries and no increase in current tax rates?

2/3 OF
VOTES
CAST

EL MONTE CITY (Registration: *29,717)

GG ESSENTIAL CITY SERVICES PRESERVATION AND PROTECTION MEASURE. To preserve and maintain funding for essential city services, including fire and other emergency response services, pothole repair, street and storm drain maintenance, graffiti removal, on-duty police staffing, street lighting, park maintenance, emergency reserves maintenance and other general city services, shall an ordinance establishing a temporary transactions (sales) and use tax of one-half of one percent (1/2%) for a period of five years be adopted.

MAJORITY

EL MONTE CITY SCHOOL DISTRICT (Registration: *26,158)

KC EL MONTE ELEMENTARY SCHOOL REPAIR AND UPGRADE MEASURE. To improve the quality of education/ensure safe school campuses, upgrade classroom technology to meet current teaching standards, shall El Monte City School District repair, acquire, construct, equip classrooms, sites/facilities, complete safety/energy-efficiency upgrades, replace aging roofs, heating, electrical, cooling systems, upgrade technology/add new computer labs, by issuing \$75,000,000 in bonds at legal rates, qualifying for state matching funds, with independent oversight, no money for administrators' salaries?

55% OF
VOTES
CAST

*Figure as of October 10, 2008. Final registration figures are scheduled to be available after October 20.

LOCAL MEASURES

**VOTES
REQUIRED**

EL MONTE UNION HIGH SCHOOL DISTRICT (Registration: *51,484)

- D** To ensure safe high school campuses and better prepare local students for college and high demand jobs, shall El Monte Union High School District rehabilitate, acquire, construct, and equip classrooms, sites, and facilities, complete safety/energy-efficiency upgrades, replace aging portables with permanent classrooms, upgrade technology and add new science labs, by issuing \$148,000,000 in bonds at legal rates, qualifying for State matching funds, with independent oversight, no money for staff salaries, and all funds benefiting local high school? 55% OF VOTES CAST

EL SEGUNDO UNIFIED SCHOOL DISTRICT (Registration: *9,943)

- M** To support high academic achievement, enhance student safety, and improve the 80 year old auditorium and the athletic facilities frequently used by the community, by repairing outdated wiring and plumbing, improving energy efficiency, reducing water use, and mitigating safety hazards and accessibility issues, shall the El Segundo Unified School District issue up to \$14,000,000 in bonds at legal interest rates, with all funds used locally, an independent citizens' oversight committee, annual audits and NO money for administrator salaries? 55% OF VOTES CAST

HAWTHORNE CITY (Registration: *28,495)

- V** Shall Ordinance No. 1925 be adopted to maintain the rate of the City of Hawthorne's Communication Users' Tax (formerly the Telephone Users Tax and Cable Television Users Tax) at 5% to revise the method for calculating and collecting the Communication Users' Tax to reflect technological advances and changes in federal law; to continue the tax exemption for senior-citizen and disabled households; and to ratify and approve the past collection of the Tax? MAJORITY

INGLEWOOD CITY (Registration: *45,950)

- UUT CITY OF INGLEWOOD COMMUNICATIONS USERS TAX RATE REDUCTION AND MODERNIZATION MEASURE.** Shall an ordinance be adopted reducing the existing tax rate on cable/telephone services from 10% to 8% , with revenues funding vital services including; anti-gang/after-school programs, 911 emergency, public safety, fire protection, parks, recreation, graffiti abatement, libraries, and senior services; replacing outdated ordinances with a modern ordinance ensuring taxpayers are treated equally, exemptions for low-income seniors and disabled, and annual independent audits for fiscal accountability? MAJORITY

*Figure as of October 10, 2008. Final registration figures are scheduled to be available after October 20.

LOCAL MEASURES

**VOTES
REQUIRED**

LAKWOOD CITY (Registration: *41,909)

L Shall an ordinance be adopted to update and continue the telecommunications portion of Lakewood’s utility users tax to fund law enforcement, gang and drug prevention programs, after-school activities, senior transportation, parks, street and traffic signal maintenance and other essential services, with exemptions for low-income residents and seniors and provisions for equal treatment of taxpayers regardless of technology used, annual audits, public review of expenditures, no rate increase without voter approval, and local control of revenues? MAJORITY

LONG BEACH CITY (Registration: *236,016)

G MEASURE G-LONG BEACH UTILITY USERS TAX MODERNIZATION MEASURE. Without raising current tax rates, shall an ordinance be adopted to help preserve funding for critical City services, including police and fire protection, paramedic and emergency response, street maintenance, parks, youth services, and libraries, by updating the telephone users tax to include new and evolving technologies so that all taxpayers are treated equally regardless of technology used? MAJORITY

I MEASURE I-LONG BEACH INFRASTRUCTURE REINVESTMENT ACT. To repay bonds which the City intends to issue to repair/replace city streets, sidewalks, alleys, storm drains, fire stations, police stations, libraries and recreational facilities and to acquire, restore and preserve wetlands, shall an Ordinance be adopted which establishes an annual parcel tax of \$120 per residential unit (0.4 to 8.8 cents per square foot for other uses) adjusted annually for inflation? 2/3 OF VOTES CAST

LONG BEACH UNIFIED SCHOOL DISTRICT (Registration: *259,116)

K CLASSROOM REPAIR, STUDENT SAFETY MEASURE. To make essential health/safety repairs, retain teachers, qualify for matching grants, shall Long Beach Unified School District retrofit schools for earthquake safety/handicap accessibility, repair restrooms/plumbing/roofs/fire safety, remove lead paint/asbestos, upgrade vocational classrooms/technology/energy efficiency, expand after-school programs, reduce overcrowding, by acquiring, repairing, constructing, equipping sites, facilities, joint-use buildings, and issuing \$1,200,000,000 in bonds at legal rates with independent audits, citizen’s oversight, and no money for administrators’ salaries? 55% OF VOTES CAST

*Figure as of October 10, 2008. Final registration figures are scheduled to be available after October 20.

LOCAL MEASURES

**VOTES
REQUIRED**

LOS ANGELES CITY (Registration: *1,219,141)

A CITY OF LOS ANGELES SPECIAL GANG AND YOUTH VIOLENCE PREVENTION, AFTER-SCHOOL AND JOB TRAINING PROGRAMS TAX. PROPOSITION A. To address gang violence through prevention and job training programs; preventing students from dropping out of school; funding supervised after-school programs, tutoring/mentoring, vocational/apprenticeship programs; expanded graffiti removal; requiring Controller audits, citizen oversight; funding proven programs; shall the City of Los Angeles levy an annual \$36 gang prevention tax, with discounts for low-income seniors, on each real property parcel?

2/3 OF
VOTES
CAST

B UPDATE OF LOW RENT HOUSING AUTHORIZATION. PROPOSITION B. Shall existing voter-approved authorization for low rent housing be revised to remove impediments to federal and state funding and requirements not compatible with current housing needs, authorize the development, construction or acquisition of low rent housing by public entities in the City of Los Angeles, maintaining the previously authorized voter-approved level of 3,500 units per Council District, subject to availability of funding and all City development requirements?

MAJORITY

LOS ANGELES COMMUNITY COLLEGE DISTRICT (Registration: *2,064,104)

J LOCAL COMMUNITY COLLEGE CLASSROOM REPAIR, PUBLIC SAFETY, NURSING AND JOB TRAINING MEASURE. To prepare students for jobs by improving classrooms, laboratories, equipment; train nurses, police, firefighters, paramedics; increase apprenticeship training opportunities; repair electrical wiring, plumbing, fire alarms; improve earthquake safety, energy efficiency to reduce costs; acquire/improve real property; shall Los Angeles Community College District issue \$3.5 billion in bonds at legal interest rates, requiring public review, oversight, no money for administrators' salaries and no tax rate increase?

55% OF
VOTES
CAST

LOS ANGELES UNIFIED SCHOOL DISTRICT (Registration: *1,750,287)

Q SAFE, HEALTHY NEIGHBORHOOD SCHOOLS MEASURE: To improve student health, safety and educational quality, shall the Los Angeles Unified School District: continue repair/upgrade of aging/deteriorating classrooms, restrooms; upgrade fire/earthquake safety; reduce asbestos, lead paint, air pollution, water quality hazards; build/upgrade specialized classrooms students need to meet job/college requirements; improve classroom Internet access by issuing \$7 billion in bonds, at legal interest rates; with guaranteed annual audits, citizens' oversight, no increase in maximum tax rate?

55% OF
VOTES
CAST

*Figure as of October 10, 2008. Final registration figures are scheduled to be available after October 20.

LOCAL MEASURES

**VOTES
REQUIRED**

LYNWOOD CITY (Registration: *19,334)

HH PRIORITY FOR USE OF UTILITY USER’S TAX FUNDS. Shall the Lynwood City Council make its top priority for use of Utility User’s Tax revenue law enforcement, gang suppression, crime and drug intervention, graffiti abatement, and prosecution of those engaged in prostitution? MAJORITY

II REDUCTION AND RATIFICATION OF UTILITY USER’S TAX. To help preserve the safety and character of the City of Lynwood through general City services such as law enforcement, fire protection, street repair, park maintenance, and recreational services, shall the city’s utility user’s tax be reduced to nine percent, ratified, and updated based on changes in technology and laws since it was instituted in 1990; provided that exceptions for senior citizens and disabled persons shall also remain? MAJORITY

C TERM LIMITS; CITY OF LYNWOOD. Shall a term limits ordinance be adopted in the City of Lynwood so that no member of the city council may serve more than two consecutive terms in office? MAJORITY

MANHATTAN BEACH UNIFIED SCHOOL DISTRICT (Registration: *23,204)

BB To attract and retain quality teachers, improve instruction, and ensure college and career readiness for local students, shall Manhattan Beach Unified School District rehabilitate 58-year old Mira Costa High School including replacing deteriorated classrooms with new classrooms and science labs, upgrading technology, replacing deteriorated plumbing/restrooms, and improving safety/energy-efficiency, by issuing \$67,480,000 in bonds at legal rates, with independent oversight, mandatory audits, no money for administrator salaries, and all funds staying local to improve Manhattan Beach schools? 55% OF VOTES CAST

MAYWOOD CITY (Registration: *7,111)

MC Shall an ordinance be adopted to impose a Transactions and Use Tax at the rate of one percent (1%); in order to continue funding general municipal services, such as police, fire protection and paramedic, street maintenance, parks and libraries? MAJORITY

*Figure as of October 10, 2008. Final registration figures are scheduled to be available after October 20.

LOCAL MEASURES

**VOTES
REQUIRED**

MT. SAN ANTONIO COMMUNITY COLLEGE (Registration: *322,762)

RR CLASSROOM REPAIR, EDUCATION IMPROVEMENT, PUBLIC SAFETY/JOB TRAINING MEASURE. To maintain academic excellence for students/nurses/firefighters by upgrading classrooms/laboratories/fire alarms, repairing roofs/plumbing, removing lead paint/asbestos, retrofitting building for earthquake safety/handicap accessibility, increasing energy efficiency, expanding job training, shall Mt. San Antonio Community College District repair, acquire, construct, equip buildings/sites/facilities by issuing \$353,000,000 of bonds at legal rates, with annual audits, citizens' oversight, no money for administrators' salaries, and no tax rate increase?

55% OF
VOTES
CAST

PASADENA UNIFIED SCHOOL DISTRICT (Registration: *107,323)

TT To repair or replace deteriorating and outdated plumbing, heating, ventilation, and fire alarm systems; replace aging portable classrooms; make disabled access improvements, implement energy and water-saving projects; modernize or reconstruct kindergartens, cafeterias, multipurpose facilities and gyms; and make the District eligible for millions in State matching grants, shall Pasadena Unified School District issue \$350,000,000 of bonds at lawful interest rates, with no money for administrative salaries, and spending annually reviewed by an independent citizens' oversight committee?

55% OF
VOTES
CAST

PICO RIVERA CITY (Registration: *28,080)

P MEASURE P. THE PICO RIVERA CITY SERVICES PROTECTION MEASURE. To preserve public safety, community programs and prevent significant cuts to essential services, by funding general City services including hiring additional police, maintaining anti-gang and graffiti efforts, youth and after-school parks and recreation services, expanding library and parks, fixing City streets, and other essential neighborhood improvements, shall the City sales tax be increased by one cent with annual financial audits, expenditure reports, and financial oversight?

MAJORITY

POMONA CITY (Registration: *46,134)

PC Should a temporary two years and two months Utility Users Tax (UUT) rate increase be enacted in the City of Pomona in the amount of one percent (1.0%) for Citywide improvements and services from nine percent (9.0%) to ten percent (10.0%)?

MAJORITY

*Figure as of October 10, 2008. Final registration figures are scheduled to be available after October 20.

LOCAL MEASURES

**VOTES
REQUIRED**

POMONA UNIFIED SCHOOL DISTRICT (Registration: *55,254)

PS To repair old plumbing, heating, ventilation, and air conditioning systems; provide academic academies and magnet schools; upgrade technology; improve access to computers; expand science labs; renovate and construct classrooms and educational facilities, and make the District eligible to receive an estimated \$47.5 million in State matching grants, shall Pomona Unified School District issue \$235 million of bonds at lowest possible interest rates, with no money for administrative salaries, and spending annually reviewed by an independent oversight committee?

55% OF
VOTES
CAST

REDONDO BEACH CITY (Registration: *38,771)

DD CHARTER AMENDMENT. Shall an Initiative to amend the Redondo Beach City Charter by adding Article XXVII to require voter approval of specified changes in allowable land use be adopted?

MAJORITY

EE CHARTER AMENDMENT. Shall the Redondo Beach City Charter be amended by adding Article XXVII to require voter approval before any of the following changes in allowable land use or development standards could be made: rezoning of single family residential zones; rezoning of low density multi-family residential zones to any higher density residential zone; rezoning of park or open space; or any zoning amendment that would increase the height limit on buildings in the Coastal Zone?

MAJORITY

ROSEMEAD CITY (Registration: *18,213)

CC Shall the proposed City Charter of the City of Rosemead be adopted?

MAJORITY

ROSEMEAD SCHOOL DISTRICT (Registration: *9,677)

O To upgrade outdated heating, ventilation, and air conditioning systems, and deteriorating plumbing; make health safety, and handicapped accessibility upgrades, and improve drinking water; implement computer and technology upgrades; install security and monitoring systems to increase student safety; and acquire, construct, repair, replace and modernize classrooms, cafeterias, and school facilities; shall Rosemead School District issue \$30 million in bonds at legal interest rates with annual audits and independent citizens' oversight an no money for administrators' salaries?

55% OF
VOTES
CAST

*Figure as of October 10, 2008. Final registration figures are scheduled to be available after October 20.

LOCAL MEASURES

**VOTES
REQUIRED**

SAN GABRIEL CITY (Registration: *14,425)

SG To fund general city services, including repairing, paving and maintaining local streets; keeping public areas and landscapes clean and well-maintained; preserving fire and paramedic emergency response times; improving police protection and investigations that reduce crime, shall the City of San Gabriel's existing utility users tax ordinance be amended to reflect changes in technology and federal law, and increased from 6% to 8%, with mandatory audits and all money staying local for services and facilities in San Gabriel? MAJORITY

SANTA CLARITA VALLEY SANITATION DISTRICT (Registration: *113,001)

S To reduce chloride levels in the Santa Clara River as required by the State of California and minimize future rate increases for the customers of Santa Clarita Valley Sanitation District of Los Angeles County, shall an ordinance be adopted requiring the removal of, and providing a compensation program for, all installed residential "salt-based" self-regenerating water softeners within the district's service area? MAJORITY

SANTA MONICA CITY (Registration: *57,594)

T **MEASURE T.** Shall the City's General Plan be amended through 2023 to establish a City-wide annual limit on commercial development of 75,000 square feet, which: would apply to the types of projects that required City Council or Planning Commission approval on 1/16/08; would not apply to specified uses such as residential, parking, hospitals, schools, care and government facilities; and would allow for borrowing from future years in the five-year average stays within the limit? MAJORITY

SM **MEASURE SM.** Shall an ordinance be adopted to continue and update Santa Monica's Utilities Tax on telecommunication services to fund City activities including police, fire, paramedic and emergency services, school and afterschool programs, gang and drug prevention programs, parks and recreation programs, environmental protection and other general fund services, with tax-exemptions for low-income seniors and disabled residents, with provisions ensuring equal treatment of taxpayers regardless of technology used, and with expenditures subject to independent annual audits? MAJORITY

*Figure as of October 10, 2008. Final registration figures are scheduled to be available after October 20.

LOCAL MEASURES

**VOTES
REQUIRED**

SANTA MONICA COMMUNITY COLLEGE DISTRICT (Registration: *68,983)

AA SANTA MONICA COLLEGE CAREER AND EDUCATIONAL IMPROVEMENTS. To improve job and career training, provide for modernization and safety, and increase educational opportunities, shall Santa Monica Community College District issue \$295 million in bonds at legal rates to improve student teaching/career training in science, nursing, technology, media, and emerging high-tech fields; construct/equip/modernize math and science laboratories; replace deteriorating buildings; upgrade fire, seismic safety; achieve energy savings; with citizens' oversight, annual performance/financial audits, with no funds for administration? 55% OF VOTES CAST

SOUTH PASADENA CITY (Registration: *14,750)

SP Shall the Ordinance No.2174 approving and adopting the amendment to the amended Redevelopment Plan for the Downtown Revitalization Project No. 1 be adopted? MAJORITY

TORRANCE UNIFIED SCHOOL DISTRICT SPECIAL ELECTION (Registration: *74,358)

Y To make classrooms and core academic facilities safe and modern, improve learning and qualify for State matching money, shall Torrance Unified School District renovate or replace outdated classrooms and school buildings; repair damaged walls and floors; replace worn-out roofs, plumbing and lighting systems; repair faulty drainage systems, hardscapes, and other safety hazards, by issuing \$265 million in bonds at legal interest rates with mandatory audits, independent citizen oversight, and all money staying local? 55% OF VOTES CAST

Z To fund additional upgrades to school facilities that support student learning and extra-curricular activities, shall Torrance Unifies School District also issue \$90 million in bonds at legal interest rates to renovate worn-out physical education facilities and playgrounds for health and safety; construct music/art classrooms and science labs; and replace deteriorating covered walkways to establish a safe school environment; with mandatory audits, independent citizen oversight, and all money staying local? 55% OF VOTES CAST

*Figure as of October 10, 2008. Final registration figures are scheduled to be available after October 20.

LOCAL MEASURES

**VOTES
REQUIRED**

VICTOR VALLEY COMMUNITY COLLEGE DISTRICT (Registration: *101)

JJ VICTOR VALLEY COLLEGE PUBLIC SAFETY, HEALTH CARE JOB TRAINING MEASURE. To improve education, prepare students for well-paying jobs and university transfer and qualify for State matching funds, shall Victor Valley Community College District improve classrooms, labs and educational buildings and establish a Workforce Training Center and Public Safety Academy for nursing, healthcare, emergency medical, police, firefighting and business careers, upgrade aging infrastructure, acquire sites, equipment, construct/repair buildings/science labs, by issuing \$297,500,000 million in bonds , at legal rates with independent citizens' oversight/no money for administrators' salaries?

55% OF
VOTES
CAST

WESTSIDE UNION SCHOOL DISTRICT (Registration: *31,390)

WS To improve the quality of education; construct new elementary and middle schools to reduce overcrowding; upgrade and renovate outdated classrooms; increase student access to computers and modern technology; make health, safety and security improvements; and qualify the District for \$72 million in State-matching grants, shall the Westside Union School District issue \$63.5 million of bonds at legal interest rates, with no money for teacher or administrative salaries, and spending annually reviewed by an independent citizens' oversight committee?

55% OF
VOTES
CAST

WHITTIER UNION HIGH SCHOOL DISTRICT (Registration: *97,776)

W To provide excellent high schools for all students in the Whittier Union High School District; build instructional, vocational and career technical classrooms; upgrade security and student support facilities including athletic facilities; and improve heating, ventilation and air conditioning systems; shall the Whittier Union High School District be authorized to issue up to \$75,000,000 in bonds at legal interest rates, with an independent citizens' oversight committee, annual audits, and no money for administrative salaries?

55% OF
VOTES
CAST

WILLIAM S. HART UNION HIGH SCHOOL DISTRICT (Registration: *119,368)

SA To improve educational opportunities for local students shall William S. Hart Union High School District: repair, replace and upgrade outdated classrooms, science/computer labs, instructional technology, wiring, plumbing, heating, ventilation; improve safety to meet current fire/seismic codes, add a new high school and facilities and classrooms to relieve student overcrowding; by issuing \$300,000,000 in bonds at interest rates below legal limits, with independent citizen's oversight, annual financial audits, all funds remaining local and no money for administrator salaries?

55% OF
VOTES
CAST

*Figure as of October 10, 2008. Final registration figures are scheduled to be available after October 20.

ELECTION DAY/NIGHT

SPEED OF BALLOT COUNTING ELECTION NIGHT - HISTORICAL TRENDS

DO NOT EXPECT very many ballots to be counted before 11:00 p.m. Results of early vote by mail ballots will be available by 8:30 p.m.; however, most precinct ballots do not begin to arrive at the Tally Center in Norwalk until 10:30 - 11:00 p.m. Upon arrival, there are many check-in steps prior to tabulation (see “How do the ballots get to Norwalk?”).

Los Angeles County tabulates the vote using a central count system. There is no tabulation at the voting locations.

Historically for Countywide general elections, approximately 50% of the ballots are counted by midnight on election night. The following chart provides statistical information on the speed of ballot tabulation from midnight onward. We realize that media deadlines are often prior to midnight; however, we cannot count ballots until they physically arrive in Norwalk.

2002 GENERAL ELECTION			2004 GENERAL ELECTION			2006 GENERAL ELECTION		
TIME	BALLOTS COUNTED	%	TIME	BALLOTS COUNTED	%	TIME	BALLOTS COUNTED	%
Midnight	1,100,541	63.53	Midnight	1,579,853	50.20	Midnight	1,198,021	59.67
12:31 am	1,318,016	79.26	12:40 am	1,971,556	67.51	12:40 am	1,362,916	71.58
12:51 am	1,403,045	85.09	1:00 am	2,180,626	77.12	1:00 am	1,468,861	78.94
1:11 am	1,485,250	90.47	1:20 am	2,393,902	86.38	1:20 am	1,598,003	87.65
1:31 am	1,571,151	95.88	1:40 am	2,541,224	92.68	1:40 am	1,697,173	94.69
1:51 am	1,601,206	97.85	2:00 am	2,629,632	96.46	3:00 am	1,760,232	99.48
2:11 am	1,627,585	99.65	2:20 am	2,672,488	98.37	4:00 am	1,762,547	100.00
2:32 am	1,632,352	99.94	2:40 am	2,704,220	99.72			
4:01 am	1,632,957	100.00	3:06 am	2,708,586	99.91			
			4:13 am	2,701,280	100.00			

VOTE BY MAIL BALLOT COUNTING - TIMES WHEN COUNTED

The following chart provides the number of vote by mail ballots counted beginning election day and the number processed and updated during the official canvass period.

2002 GENERAL ELECTION		2004 GENERAL ELECTION		2006 GENERAL ELECTION	
DATE	# VOTE BY MAIL BALLOTS COUNTED	DATE	# VOTE BY MAIL BALLOTS COUNTED	DATE	# VOTE BY MAIL BALLOTS COUNTED
11/05	246,063	11/02	564,156	11/07	370,825
11/08	57,144	11/09	95,724	11/10	73,565
11/12	48,271	11/12	20,283	11/14	63,271
11/15	3,947	11/16	9,255	11/17	11,878
11/19	3,054	11/19	6,024	11/21	6,285
11/22	1,125	11/23	4,904	11/27	4,582
11/26	78	11/26	1,347	11/29	397
				12/01	579
	359,682		701,693		531,383

ELECTION DAY/NIGHT

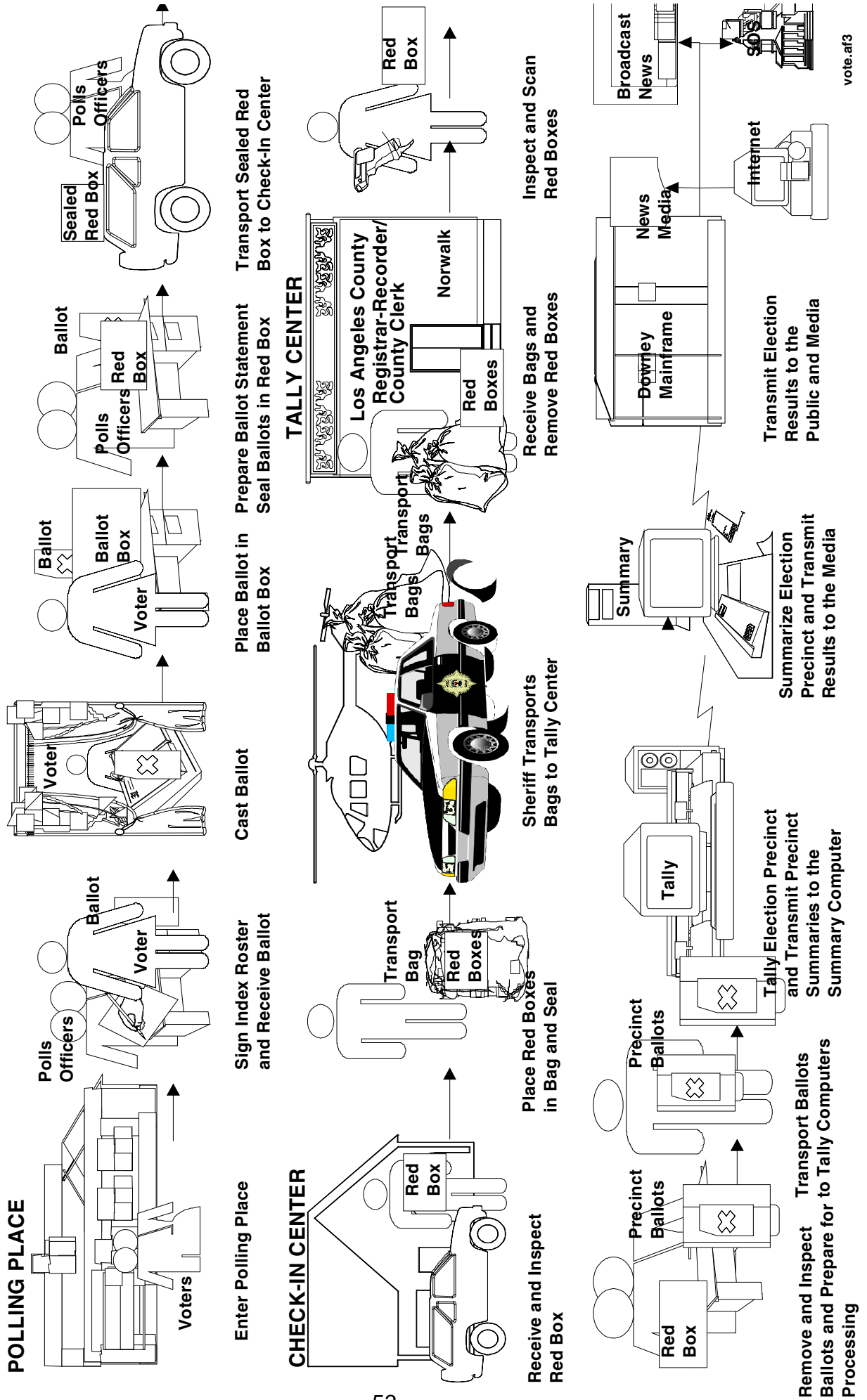
HOW DO THE BALLOTS GET TO NORWALK?

On election night, ballots from all 4,394 voting precincts are brought to the Registrar-Recorder/County Clerk's headquarters in Norwalk for tabulation.

- After the polls close at 8:00 p.m., the precinct officials must complete the paperwork to balance the number of ballots cast with the number of voters signing in and account for the number of remaining unvoted ballots. Most precincts complete this function between 9:00-9:30 p.m.
- Then precinct officials from the 4,394 precincts bring their ballots and supplies to one of 69 designated check-in centers located throughout the County, usually arriving between 9:30 - 10:30 p.m.
- Sheriff deputies transport the voted ballots from the check-in-centers, via helicopter or by car, to Norwalk. Ballots come in from as far away as Lancaster, Palmdale and Catalina Island.
- Between 10:30 - 11:30 p.m. a large number of ballots begin to arrive at RR/CC headquarters (we expect over 1 million ballots).
- Prior to tabulation, all ballots must be checked-in, taken out of boxes, inspected and prepared for counting.
- Ballots are moved into the tabulation center in a continuous flow. There operators load the ballot cards onto card readers.
- There are 18 counting stations, each with two card readers, for a total of 36 card readers.
- Because there is no specific order of processing/counting, ballots from locations closer to Norwalk are co-mingled with ballots from more distant destinations. Therefore, ballots from locations close to Norwalk are not necessarily counted first.

Thousands of dedicated individuals are involved in ballot transport, preparation and tabulation. Los Angeles County is the largest county electoral jurisdiction in the U.S. We count the most ballots by far on election night!

Voting And Ballot Processing Flow Chart





COUNTY OF LOS ANGELES

REGISTRAR-RECORDER/COUNTY CLERK

12400 IMPERIAL HWY. – P.O. BOX 1024, NORWALK, CALIFORNIA 90651-1024 - www.lavote.net

DEAN C. LOGAN

Registrar-Recorder/County Clerk

October 10, 2008

TO: All Campaigns and Political Parties

FROM: Dean C. Logan, Registrar-Recorder/County Clerk

INCOMPLETE BALLOT COUNTING ON ELECTION NIGHT

Campaigns and political parties are frequently surprised on the day after a major election when they learn that there are several hundred thousand ballots countywide remaining to be counted. Statewide, typically 20% of ballots cast are not yet included in the election night tally. This memo explains the logistics of election night counting and follow-up ballot tabulation that occurs in the days/weeks following the election. State law requires each election jurisdiction to complete an official audit called a “canvass” during the 28 days after the election. When the canvass is completed, the Secretary of State certifies the results.

There are three categories of ballots which cannot be processed on Election Night:

- Vote by Mail ballots (those turned in at voting locations and those received by mail just before or on Election Day)
- Provisional ballots voted at the polls
- Write-in ballots

NOTE: All valid ballots in the above categories are counted prior to official certification of the results.

VOTE BY MAIL BALLOTS TURNED IN AT POLLING LOCATIONS

Many vote by mail voters wait until the last minute to make their voting choices and then drop off their ballots at a polling place or at RR/CC headquarters on Election Day. We receive these ballots very late on election night. All vote by mail ballots must be pre-processed before they are counted. We must verify every vote by mail voter’s signature prior to opening the vote by mail ballot envelopes to remove the ballots in preparation for counting.

PROVISIONAL BALLOTS

Provisional ballots are issued at the polls when a voter’s name is not listed in the poll roster, or when our records indicate the voter was already sent a vote by mail ballot. Provisional ballots are sealed in special envelopes at the polls and must be individually researched and verified at the Registrar-Recorder/County Clerk’s Office before ballots are counted or rejected in accordance with election laws. Once a provisional voter’s eligibility to vote is determined, the ballot is counted.

WRITE-IN BALLOTS

When a voter chooses to vote for a write-in candidate whose name is not printed on the ballot, that ballot cannot be counted on election night. Each ballot containing a write-in vote must be individually reviewed to determine whether or not the write-in vote is for a qualified write-in candidate and whether or not the voter overvoted (i.e. voted for a candidate on the ballot and also voted for a write-in candidate for the same office). When an overvote occurs, neither vote can be counted, although the rest of the ballot selections will be counted. Due to the individual scrutiny involved, no portion of any ballot containing a write-in vote is counted on election night. **(Vote tallies for write-in candidates are not available until the conclusion of the official canvass because each ballot containing a write-in vote must be set aside for manual review.)**

SUMMARY

Supplemental ballot counting of vote by mail, provisional and write-in ballots occurs in sequential order after the election but before certification of official results (i.e. all Vote by Mail ballots must be verified and cleared prior to verifying provisional ballots in order to ensure there are no duplicates among these categories). These ballots are not segregated by district prior to counting. Therefore, the number of outstanding ballots for any specific electoral district is unknown until the voting system tallies these ballots.

California law requires election authorities to complete and certify results within 28 days. This provision of the law recognizes the complexity of completing the ballot count and conducting a thorough audit of the election results to ensure accuracy. Part of the canvass process is a legally required manual tally of the votes cast for all candidates and measures on the ballots in 1% of the 4,394 voting precincts. This manual process verifies the accuracy of the computer count.

Supplemental ballot counting takes place at 2 p.m. every Friday and Tuesday throughout the canvass period. Therefore, the first supplemental count will be held on Friday, November 7th at 2:00 p.m. We anticipate the majority of the outstanding vote by mail ballots will be included by the Tuesday, November 11th update. However, due to the extra research required to validate provisional ballots, these ballots are usually the last to be tallied prior to the completion of the official canvass (which must be completed by December 2nd, 2008).

Candidates and the public are invited to observe supplemental ballot counting and the manual tally of ballots from the randomly selected 1% of the voting precincts. After election night, the schedule of supplemental ballot counting will also be posted on the entrance door of our office in Norwalk and on our website www.lavote.net.

We realize it is difficult for candidates/campaigns involved in close contests to wait and know the results of the election. The legally mandated processes described above are utilized to ensure that every vote is counted and included in the official final election returns.

PROVISIONAL BALLOT OVERVIEW

According to California Election Code (secs. 14310,14311) registered voters whose voter registration or Vote By Mail status cannot be determined may vote a provisional ballot on Election Day. Provisional voters are voters who typically move to a different residence address within the same county and fail to reregister to vote or who otherwise fail to notify the county elections official and who attempt to vote at a polling location. They may also be voters whose Vote By Mail status cannot be determined. Provisional voters may vote at polling locations, county election offices, or at designated central locations if they fill out and sign a provisional ballot envelope and provide proof of residency such as a drivers license or an item containing their name and current address. A government issued photo ID is not required.

Assigned precincts for registered voters are determined by a voter's residence as referenced on their voter registration form. All voters who choose to vote at the polls are encouraged to visit their assigned precinct polling place location. However, voters who choose to vote at a location other than their assigned precinct may vote a provisional ballot. All polling place staff are trained to notify voters of their voting options, including their eligibility to vote a provisional ballot. After a provisional ballot is voted a voter's registration status must be determined at Election Headquarters before the provisional ballot is counted and added to the overall election tally. If a voter's registration status cannot be determined his/her provisional ballot is not counted.

The Election Code was amended by the State Assembly in 2003. Prior to that time, most provisional ballot races were not counted. The current Election Code allows provisional voters whose registration status can be verified and who vote outside of their precinct location but within their assigned electoral jurisdictions (such as school board or state assembly districts) to have their vote counted. Votes for statewide or presidential candidates and ballot measures will also be counted if they are cast outside of a voter's electoral jurisdiction.

To facilitate this process, staff at the Registrar-Recorder/County Clerk's office segregate all provisional ballot envelopes to determine the registration status and precincts of provisional voters. Then, staff determines the eligible contests in those precincts and the contests marked on the ballot. If a contest or contests on a voted ballot do not represent those contests offered on the precinct ballot, the ballot is remade to include only those votes cast that correspond with those contests offered in the precinct. Then, eligible ballots are counted and added to the final tally. All provisional ballot envelopes are marked and entered into the system as "count".

If you have questions regarding your registration status or provisional voting you are encouraged to call the Registrar-Recorder/County Clerk at 562-466-1310.

HOW TO READ ELECTION RESULTS BULLETIN

Election Results Bulletins contain vote tallies for candidates and measures and also the number of precincts, registered voters, and total ballots cast within Los Angeles County. Therefore, only partial results are available for statewide political offices and for those districts that overlap neighboring counties. The first bulletin produced election night contains Vote by Mail ballot results and will be available at approximately 8:30 p.m. After the initial precinct bulletin and as ballots are processed, semi-official results will be available approximately every 60 minutes until all precincts have reported. *Election results will also be continuously updated and displayed on the Internet election night at:*

www.lavote.net AND www.sos.ca.gov

The following is intended to assist you in understanding the statistical information provided on the front page of the Election Results Bulletin. Listed below are two sample bulletins from the 2004 General Election.

<u>ELECTION RESULTS</u> <u>BULLETIN (A)</u>				<u>ELECTION RESULTS</u> <u>BULLETIN (A)</u>			
			8:00 PM				10:59 PM
TOTAL PRECINCTS	4,571			TOTAL PRECINCTS	4,571		
PRECINCTS REPORTING	0 (G)	0.00		PRECINCTS REPORTING (B)	1,780	38.94	
PARTY REGISTRATION (B)				PARTY REGISTRATION (C)			
NONPARTISAN	1,522			NONPARTISAN	239,044		
DEMOCRATIC	4,054			DEMOCRATIC	729,301		
REPUBLICAN	2,566			REPUBLICAN	378,629		
OTHER PARTIES	412			OTHER PARTIES	57,588		
TOTAL	8,554 (C)			TOTAL	1,404,562		
BALLOTS CAST (E)/TURNOUT (F)				BALLOTS CAST (D)/TURNOUT (E)			
ABSENTEE TOTAL	252,444 (D)			ABSENTEE TOTAL	252,444		
NONPARTISAN	22,978	(9.10)		NONPARTISAN	58,867	(9.66)	
DEMOCRATIC	131,388	(52.05)		DEMOCRATIC	333,353	(54.73)	
REPUBLICAN	94,314	(37.36)		REPUBLICAN	204,959	(33.65)	
OTHER PARTIES	3,764	(1.49)		OTHER PARTIES	11,898	(1.97)	
TOTAL	252,444 (E)			TOTAL	(D) 609,077	(E) (43.36)	
<p>(A) A sample of the FIRST BULLETIN which reflects absentee ballots pre-processed for tabulation by 8:00 p.m.</p> <p>(B) Reflects registration by party for precincts that have been tabulated.</p> <p>(C) Reflects registration only for declared absentee voter precincts which are precincts that due to their remote location and sparse population may only vote by absentee ballot.</p> <p>(D) Reflects that a total of 252,444 absentee ballots were tabulated.</p> <p>(E) Reflects the total ballots cast 252,444 by party and percentage.</p> <p>(F) No turnout is provided because the program is designed to suppress reporting this information until registration exceeds ballots cast.</p> <p>(G) Reflects that no precinct ballots have been tabulated.</p>				<p>(A) A sample of the PRECINCT results bulletin where voter turnout is displayed.</p> <p>(B) Bulletin reflects election results for absentee ballots voting plus 1,780 or 38.94% of the total election precincts 4,571.</p> <p>(C) Reflects total registration (1,404,562) by party for declared absentee voter precincts plus the 1,780 election precincts that have been processed.</p> <p>(D) Reflects total ballots cast (609,077) of which 252,444 are absentee ballots voting results. Provides breakdown of ballots cast by party and percentage.</p> <p>(E) Reflects a voter turnout of 43.36%. However, this number is skewed because of the 252,444 absentee ballots voting results reported on the first elections results bulletin with no accompanying registration except for declared absent voter precincts. The voter turnout skewing decreases as ballots are delivered and tabulated from the precincts until all have reported.</p>			

WRAPPING UP THE ELECTION/CANVASS

WHAT IS THE VOTE CANVASS?

The election canvass process is an internal audit and is required by state law to ensure the accuracy of election results. California election law allows 28 days for the conduct of the official canvass of final election results. The canvass begins on Thursday, November 6th and will be concluded no later than Tuesday, December 2nd. All aspects of the canvass are open for public observation. During the canvass, vote by mail and provisional ballots not counted on election night are researched to validate eligibility. Once validated, these additional vote by mail and provisional ballots will be counted beginning on November 7th and every Tuesday and Friday thereafter until completed. The canvass concludes with the certification and issuance of official election results. Listed below are the major components of the official canvass.

AUDIT

Roster Reconciliation - Following the close of the polls election night, precinct officers are responsible for completing the Official Ballot Statement shown below which is located on the front cover of each precinct's roster of voters.

OFFICIAL BALLOTS STATEMENT

1. TOTAL BALLOTS RECEIVED	1. <u>400</u>
2. NUMBER OF VOIDED BALLOTS	2. <u>0</u>
3. NUMBER OF UNUSED BALLOTS	3. <u>306</u>
4. NUMBER OF VOTED BALLOTS	4. <u>94</u>
5. NUMBER OF PROVISIONALLY VOTED BALLOTS	5. <u>0</u>
6. TOTAL (add 2+ 3 + 4 + 5) - SHOULD AGREE WITH #1	6. <u>400</u>
7. NUMBER OF Audio BALLOTS	7. <u>50</u>
8. TOTAL (add 4 + 7)	8. <u>144</u>
9. NUMBER OF SIGNATURES IN ROSTER - SHOULD AGREE WITH #8	9. <u>144</u>

As part of the official canvass, the number of signatures indicated by the inspector on the roster is compared to the number of ballots tabulated by the computer tally system.

1% Manual Vote Tally - All voted ballots from a randomly selected 1% of the 4,394 precincts are manually tallied and balanced against the computer counts to verify the accuracy of the election tally system. This process is required by law.

BALLOTS ADDED DURING OFFICIAL CANVASS

The following ballots are withheld from the tally system on election night. Once eligibility is determined, these ballots are added to the election results. Withheld ballot types include:

- Vote by Mail Ballots returned on election day to our office and dropped off at polling locations. These ballots do not arrive in sufficient time to be individually signature-verified, opened and prepared for tabulation on election night.

- Damaged Ballots that are unable to be processed through the election tally system and, therefore, must be manually duplicated prior to tabulation.
- Write-In Ballots must be individually reviewed to determine if the write-in vote is for a qualified/unqualified write-in candidate and whether or not the voter also voted for a candidate listed on the ballot for the same office (i.e. overvoted the ballot).
- Provisional Ballots issued at the 4,394 voting locations on Election Day. These ballots must be individually researched to determine eligibility. Provisional ballots are issued at polling locations when a person's voter registration cannot immediately be authenticated.

In the June 6, 2006 Gubernatorial Primary Election, approximately 351,224 provisional, vote by mail and damaged ballots remained to be processed after election night.

CANVASS SCHEDULE

The following provides the canvass schedule of events for supplemental ballot counting.

NOVEMBER 4, 2008
PRESIDENTIAL GENERAL ELECTION
SCHEDULED TALLY UPDATES

- Friday, November 7th
1st Ballot Counting Update
- Tuesday, November 11th
2nd Ballot Counting Update
- Friday, November 14th
3rd Ballot Counting Update
- Tuesday, November 18th
4th Ballot Counting Update
- Friday, November 21st
5th Ballot Counting Update
- Monday, November 24th
6th Ballot Counting Update
- Wednesday, November 26th
(If needed).
- Friday, November 28th
(If needed).

Board of Supervisors declares results official Tuesday, December 2, 2008.

REQUESTING



A RECOUNT

2008

A recount is conducted by the elections official for the purpose of verifying the number of votes counted for any office or measure in an election. California Elections Code Chapter 9, Sections 15620 through 15634 govern voter requested recounts.

REQUESTING A RECOUNT

Who can request

Any voter of the State may file a request. (E.C. 15620)

Timing of Request

The request must be filed within five (5) calendar days after the completion of the official canvass. The canvass is complete when the elections official signs the Certification of the Election Results. (E.C. 15620)

Exceptions: *For statewide contests, the request must be filed within five (5) calendar days beginning on the 29th day after the election.*

Format of request

- The request must be in writing. (E.C. 15620)
- Must specify the contest to be recounted. (E.C. 15620)
- Must state on behalf of which candidate, slate of electors, or position on a measure (affirmative or negative) it is filed. (E.C. 15620)
- May specify the order in which precincts shall be counted. (E.C. 15622)
- May specify the method of counting to be used (computer, manual or both). (E.C. 15627)
- May specify any other relevant material to be examined. (E.C. 15630)
- For statewide contests, may specify in which county or counties the recount is sought. (E.C. 15621)

Place of filing

- With the county elections official responsible for conducting the election, if the contest is not voted upon statewide. (E.C. 15620)
- If election is conducted in more than one county, the request may be filed with the county elections official of, and the recount conducted within, any or all of the affected counties. (E.C. 15620)
- With the Secretary of State if the contest is voted upon statewide. (E.C. 15621)
- With the City Clerk if it is a city election (or if the city has not consolidated with the county). (E.C. 15620)

Notice of recount

- A notice stating the date and place of the recount will be posted by the elections official at least one day prior to the recount and the following persons will be notified in person or by telegram. (E.C. 15628)
- All candidates for the office being recounted.
- Authorized representatives for presidential candidates, if the race for presidential delegates is to be recounted.
- Proponents of any initiative or referendum or persons filing ballot arguments for or against any initiative, referendum or measure to be recounted.
- Secretary of State if the recount is for candidates for any state or federal office, delegates to a national convention, or any state measure.

Process of recount

- The recount is open to the public. (E.C. 15629)
- Recount must start no later than seven calendar days following the receipt of the request and shall be continued daily, Saturdays, Sundays, and holidays excepted, for not less than six hours each day until completed. (E.C. 15626)
- A manual recount must be conducted under the supervision of the elections official by recount boards, consisting of four voters of the county, appointed by the elections official. (E.C. 15625)

Result of Recount

- The results of a recount are declared null and void unless every vote in which the contest appeared is recounted. (E.C. 15632)
- Upon completion of a recount, if a different candidate, slate of electors, or position on a measure receives a plurality of votes, the results of the official canvass will be changed and the election results re-certified. (E.C. 15632)
- A copy of the results of any recount conducted shall be posted conspicuously in the office of the elections official. (E.C. 15633)

Cost and payment

- The elections official shall determine the amount of deposit necessary to cover costs of the recount for each day. (E.C. 15624)
- The voter filing the request for recount must deposit, before the recount commences and at the beginning of each day following, such sums as required by the election official to cover the cost of the recount for that day. (E.C. 15624)

IF UPON COMPLETION OF THE RECOUNT THE RESULTS ARE REVERSED, THE DEPOSIT SHALL BE RETURNED. (E.C. 15624)

COST BREAKDOWN FOR MANUAL RECOUNT *	
No. of Boards	Cost per Day
1	\$3,260
2	\$5,217
3	\$7,174
4	\$9,131
5	\$12,392
6	\$14,349
7	\$16,306
8	\$18,263
9	\$21,523
10	\$23,480
11	\$25,437
12	\$27,394

*Cost includes labor, equipment, material and personnel. If computer recount is requested costs vary.

NOTE: Automatic Manual Recount - By law, a random sample of ballots from every election must be recounted manually to verify the computer count. A minimum of all votes cast in one percent (1%) of the precincts is included in this process. *The Automatic Manual Recount is open to the public.*
(E.C. § 15360)

MOST COMMONLY ASKED QUESTIONS



WHAT IS A PROVISIONAL BALLOT AND WHY DO THEY TAKE SO LONG TO PROCESS AFTER EACH ELECTION?

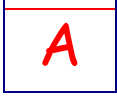


Provisional ballots are provided at the voting locations to those voters whose names are not listed on the precinct's roster. Often the voter has moved without informing the Registrar's Office. Sometimes the voter's registration was canceled in error. Often the voter is at the wrong polling place. Another case of provisional voting is when the voter has an "AV" marked in the precinct's roster designating that an absentee ballot was already issued for that voter. However, the voter claims he/she never requested or received an absentee ballot, or states that he/she did not vote the absentee ballot but does not have the absentee ballot to surrender. In these cases, a voter may vote but the ballot is inserted and sealed into a provisional envelope in order to avoid co-mingling with other voted ballots.

The voter, and the precinct inspector at the polling place complete the required information listed on the outside of the provisional envelope. After the envelope is complete, the Pollworker will enter the serial number and the line number from the Provisional Ballot List on the pink Provisional Voter Receipt and give it to the voter. The pink Provisional Voter Receipt was first used in the June 2004 Primary Election. This receipt will give the voter proper information that he/she needs to determine whether or not a provisional vote has been counted. Such "provisional ballots" are not opened or counted until the registration information is researched by the Registrar's Office and the voter is determined to be eligible to vote. This research occurs during the days immediately following election day as part of the official vote canvass. Eligible ballots are added to the count during the canvass period. The law allows 28 days to complete the official tally of the vote (Canvass). Over 100,000 provisional ballots were cast in L.A. County at high voter turnout at the October 2003 Special Recall Election.



WHY ARE THE PHONES SO BUSY AT THE REGISTRAR'S OFFICE ON ELECTION DAY?



On Presidential Election Day, November 2000, the phone company reported that up to 10,000 calls per hour were flooding our phone system. While it is not possible to have sufficient staff to respond to such call volume, an Interactive Voice Response (IVR) system was installed and proved to double our call response capability.

The vast majority of callers ask "Where do I go to vote?" Listed below are the responses the caller will hear when calling a designated toll-free number (800) 815-2666:

- While callers are on hold awaiting connection with the IVR or a "live" operator, voice messages inform them alternate sources to obtain information on polling place look up including the back page of the voter's sample ballot booklet, our Internet website address, City Clerk's offices, County libraries and political party headquarters.
- For major elections we provide lists of polling place locations to the 88 city clerks in L.A. County, many of whom also have Internet access. Additionally, over 90 County libraries have Internet access and, along with the political parties and dozens of public and private organizations, partner with our office to assist the voting public. The cooperation of these offices and organizations has been outstanding.
- Since November 1996, poll location look-up by address has been available on our web site at: www.lavote.net.





WHY HAS MY VOTING LOCATION CHANGED?

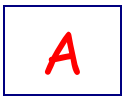


Every voter's polling place address is printed on the back cover of the sample ballot booklet he/she received in the mail prior to the election. Reasons for changes in polling place locations from previous elections include:

- In 2001, AB 280, Chapter 904 was enacted to revise the maximum number of voters in a precinct from 1,000 to 1,250 in counties with a population of 1,000,000 or more. This law had a sunset date of January 1, 2005 which meant that as of that date the law was repealed and the provisions allowing the increase to 1,250 would only be operative until that time. Effective on that same date, January 1, 2005, AB 280 also reinstated the original 1,000 maximum number of voters in a precinct. This change in law reducing the maximum precinct size from 1,250 to 1,000 resulted in creating a requirement for an additional 430 precincts beginning with the June 2006 Primary Election.
- Precinct boundary changes are required due to increased registration or consolidation of precincts.
- Polling place locations are not permanent, and are subject to availability of the public building, church, private residence, etc. for each election.
- A polling place across the street is not necessarily in the voting precinct for all residents of an area because the precinct boundary line may be established in the middle of the street due to bisecting district lines (i.e. a water district bisecting a precinct).



ARE THERE ANY SAFEGUARDS IN THE VOTE TALLY SYSTEM TO GUARD AGAINST FRAUD?



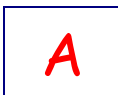
As required by law, the Department's computer tally software has been certified by the Secretary of State's Office.

- The Department is required by law to conduct computer Logic and Accuracy tests before, during, and after vote tallying on election night. Additionally, a copy of the vote count program is on file with the Secretary of State's Office.

All voted ballots from a randomly selected 1% of the 4,394 precincts are manually tallied and balanced against the computer counts to verify the accuracy of the election tally system during the Official Canvass period which takes place after election day, but before results are officially certified. This is also required by law.



WHAT PROVISIONS ARE MADE FOR VOTERS WITH DISABILITIES?

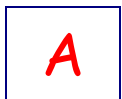


- **InkaVote Plus** An audio ballot booth is available to assist voters with special needs at every polling place on election day. Voters, who are disabled, including those who are blind or visually impaired, may vote privately and independently using an audio headset and a simple keypad. Once voting is complete, a paper ballot is printed. That ballot is then inserted into the InkaVote Plus PBR like any other ballot. Also, voters whose main language is not English may choose to vote an audio ballot in Chinese (Mandarin or Cantonese), Japanese, Korean, Spanish, Tagalog/Filipino or Vietnamese.
- **Curbside Voting** Any voter who cannot reach the voting area at the poll because of architectural barriers or physical limitations may request to vote "curbside", meaning outside of the poll location. A poll worker will bring a ballot and marking device to the voter, assist the voter if necessary, and place the voter's ballot in the ballot box.
- **Voters with Wheelchairs** Designated wheelchair accessible voting booths are available at every County poll location.

- **Permanent Absent Voting** California law permits any voter to apply for Permanent Absent Voter (PAV) status. PAV's are automatically sent an absentee ballot for each election. For further information regarding this program, please call (562) 466-1323.
- **TDD Services for the Hearing Impaired** A telecommunications device for the deaf (TDD) is available to receive calls from any citizen who has a hearing impairment. The TDD service number is (562) 462-2259.



WHAT PROVISIONS ARE MADE FOR MULTILINGUAL VOTERS?



In 1992 federal legislation (Public Law 102-344) passed extending the minority language provisions of the Voting Rights Act of 1965. Any County with more than 10,000 residents whose native language is not English and who indicated on their U.S. census form a lack of proficiency in English, is required to provide election materials in the identified languages. In Los Angeles County these language requirements extend to Chinese, Japanese, Korean, Spanish, Tagalog and Vietnamese. The Registrar-Recorder/County Clerk has installed a toll free number (800) 481-8683 for L.A. County residents to call to obtain voting materials in any of these six designated languages. Translated election materials are automatically mailed to voters who have requested this information in past elections. Multilingual information and oral assistance is also available at those polling places where a specific language threshold exists indicating a need for this assistance.



Also, on Election Day every polling place has the InkaVote Plus voting system which includes an audio ballot booth available to assist voters with special needs. Voters whose main language is not English may choose to vote an audio ballot in Chinese (Mandarin or Cantonese), Japanese, Korean, Spanish, Tagalog/Filipino or Vietnamese by using an audio headset and a simple keypad. Once voting is complete, a paper ballot is printed. That ballot is then inserted into the InkaVote Plus PBR like any other ballot.

In a continuous effort to reach voters whose first language is not English, our department's website has been expanded to include information on voting services for persons requiring assistance in Chinese, Japanese, Korean, Spanish, Tagalog/Filipino and Vietnamese (the languages mandated for translation in compliance with the U.S. Voting Rights Act). Viewers have translated links located on the home page into these specific languages for accessibility. When clicked, viewers will find a Multilingual Assistance Hotline which is a toll free number for voters to request translated materials (i.e., voter registration forms and sample ballot booklets) in a specific language. Hard copies of the "Multilingual Voter Services" brochure are available upon request, or can be viewed on our website www.lavote.net.

INKAVOTE PLUS



WHAT IS INKAVOTE PLUS?



InkaVote Plus is an enhancement to the InkaVote paper ballot voting system used by Los Angeles County voters since 2003. It consists of three parts:

1. The **voting device** and the attached special ink marker. Each voter inserts the ballot into the device, securing the ballot over the red pins and then “inks” the ballot card.
2. The **precinct ballot reader (PBR)** sits on top of the ballot box. The PBR checks ballots for overvotes (making more selection for a contest than allowed) and for completely blank ballots (undervotes) and notifies the voter. This provides a second chance for the voter to correct his/her ballot.
3. An **audio ballot booth** is available to assist voters with special needs. Voters who are disabled, including those who are blind or visually impaired, may vote privately and independently using an audio headset and simple up/down arrow keypad. Also, voters whose main language is not English may choose to vote using the audio headset in Chinese (Cantonese or Mandarin), Japanese, Korean, Spanish/ Tagalog/Filipino or Vietnamese. Other voters may also prefer to vote using the audio equipment.



HOW DOES INKAVOTE PLUS PROTECT THE VOTE?



InkaVote Plus alerts voters to overvotes (making more selection for a contest than allowed) or completely blank ballots. This allows for a second chance to make corrections. This protects the vote by insuring each voter’s choices are reflected properly.



HOW DOES THE PBR WORK?



The InkaVote Plus precinct ballot reader (PBR) contains sensors in the ballot slot. When the sensors read an overvoted contest or a completely blank ballot, the ballot returns with a printed notification explaining the error. Ballots without such errors simply pass through the PBR and drop into the ballot box.



IS MY VOTE STILL PRIVATE?



Yes! The InkaVote ballot may be inserted into the PBR in any direction including upside down. The PBR returns the ballot to a voter only if he/she has overvoted a contest or cast a completely blank ballot. Is so alerted, the voter then returns to the ballot booth to make the correction.



CAN VOTERS WITH DISABILITIES USE INKAVOTE PLUS?



Yes! InkaVote Plus includes an **audio ballot booth** to provide an independent and private voting experience for voters who are blind, visually impaired or otherwise disabled. Using a private audio headset, voters with visual or other disabilities indicate voting choices using a simple keypad. Once voting is complete, a paper ballot is printed. That ballot is then inserted into the InkaVote Plus PBR like any other ballot. (Note: voting with the audio ballot does take more time due to “reading” the ballot prior to making selections.)



HOW DOES INKAVOTE PLUS HELP VOTERS WITH LIMITED ENGLISH SKILLS ?



The audio ballot provides service in six languages in addition to English. Voters may choose an audio ballot in any of the languages mandated by the Federal Voting Rights Act: Chinese (Cantonese or Mandarin), Korean, Japanese, Spanish, Tagalog/Filipino, or Vietnamese.

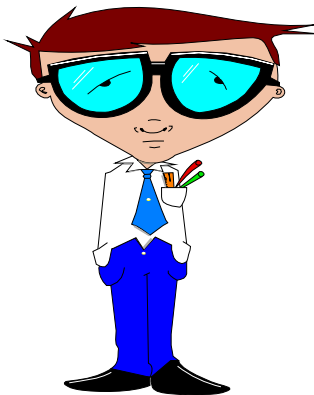
For more information on InkaVote Plus visit www.lavote.net

LOS ANGELES COUNTY REGISTRAR-RECORDER/COUNTY CLERK

COMMON QUESTIONS ABOUT VOTE BY MAIL BALLOTS, REGISTRATION AND VOTING



***VOTE BY MAIL
BALLOTS***



VOTING

REGISTRATION

	QUESTIONS	ANSWERS/AUTHORITY
VOTE BY MAIL BALLOTS		
1.	<p>WHO MAY VOTE BY MAIL?</p> <p>ARE THERE CIRCUMSTANCES UNDER WHICH A VOTER CAN BE REQUIRED TO VOTE BY MAIL?</p>	<p>Any registered voter may vote by "absentee" ballot. Prior to 1978, only persons who had a certified medical excuse or who could demonstrate that they would be out of town on election day were allowed to vote by mail. Since 1978, however, any registered voter may apply for and vote a vote by mail ballot, making "voting by mail" accessible to everyone. (E.C. SEC. 3003)</p> <p>Yes, if an election precinct has fewer than 250 registered voters on the 88th day prior to an election, that precinct can be declared by the elections official to be a "mail ballot precinct" and all voters in that precinct will automatically be sent vote by mail ballots. (E.C. SEC. 3005)</p>
HOW TO APPLY FOR A VOTE BY MAIL BALLOT		
2.	<p>WHERE CAN I OBTAIN AN APPLICATION TO VOTE BY MAIL?</p>	<p>You must apply in writing to your local elections official. The address and telephone number of your county elections official is 12400 Imperial Highway, Absent Voter Section Room 3002, Norwalk 90650, and (562) 466-1323.</p> <p>You can find the telephone number and address of your county elections official by looking in the front of your telephone directory in the white pages, government listing section, under county offices. It will be listed under either "Elections," "Registrar of Voters," "County Clerk," or "Voting."</p> <p>An application to vote by mail is also included in the sample ballot and voter information pamphlet sent to you by the county elections official prior to each election. (E.C. SEC. 3022)</p>
3.	<p>WHEN MUST I APPLY FOR A VOTE BY MAIL BALLOT?</p>	<p>Election officials process applications and mail out vote by mail ballots in the period 29-7 days prior to an election. You may submit an application prior to this time, but the elections official will hold it until the 29th day. Applications are available at the election official's office and can be completed and submitted in person. (E.C. SEC. 3001)</p> <p>The elections official cannot accept any applications received less than 7 days prior to an election. However, if during the final week before an election you become ill or disabled or for some unforeseen reason find that you will be away from your polling place on election day, you may request (in writing and signed under penalty of perjury) that a vote by mail ballot be picked up and delivered to you. You may authorize another person to bring you the ballot and to return it to the elections official after you have voted. (E.C. 3021)</p>

	QUESTIONS	ANSWERS/AUTHORITY
4.	WHAT INFORMATION MUST BE INCLUDED IN MY APPLICATION?	<p>Your application must include your printed name, your residence address, as it appears on the affidavit of registration, the address where you want the vote by mail ballot sent, and the name and date of the election for which you are applying for (e.g. November 4, 2008 Presidential General Election). In addition, you must sign and date your application. (E.C. SEC. 3006)</p> <p>NOTE: The application shall also contain a check box by which a voter not affiliated with a political party may request a vote by mail ballot for a specific party provided that the party has adopted the rule allowing those voters to vote that party's ballot.</p>
5.	I HAVE A MEDICAL DISABILITY. DO I HAVE TO APPLY FOR A VOTE BY MAIL BALLOT FOR EACH ELECTION?	<p>No, any voter may apply for permanent vote by mail voter status. Such voters are automatically sent a vote by mail ballot for every election. For further information on how to become a permanent vote by mail voter, refer to your sample ballot or call the Vote By Mail Section at (562) 466-1323. (E.C. SEC. 3201)</p> <p>Once a voter becomes a permanent vote by mail voter, he or she will retain this status as long as he or she casts a ballot in all statewide primary or general elections. If a permanent vote by mail voter fails to cast a ballot in two consecutive general elections, he or she will be removed from the permanent vote by mail voter list and will need to reapply in order to have this status restored. (E.C. SEC. 3206)</p>
6.	I WILL BE OUT OF THE COUNTRY FOR AN ELECTION AND I'M CONCERNED THAT THE MAIL IS SLOW AND I MAY NOT RECEIVE MY VOTE BY MAIL BALLOT IN TIME TO COMPLETE IT AND RETURN IT BY ELECTION DAY. IS THERE ANY WAY I CAN APPLY EARLIER THAN THE NORMAL 29 DAYS?	<p>Yes. If you are in the military or temporarily living overseas you may qualify as a "special absentee voter." Special absentee ballot applications may be processed by the elections official as many as 60 days prior to an election. Application must contain the same information cited in #4. (E.C. SEC. 3103)</p> <p>An application by a qualified special absentee voter shall be deemed an affidavit of voter registration and an application for permanent vote by mail status. (E.C. SEC. 3104)</p>
<p>HOW TO VOTE USING A VOTE BY MAIL BALLOT</p> <p>Once you have obtained your ballot by following the steps outlined above, you can vote your ballot and return it by mail or personally.</p>		
7.	I APPLIED FOR VOTE BY MAIL BALLOT. I HAVE NOT RECEIVED MY BALLOT BY RETURN MAIL AND MUST LEAVE FOR A TRIP IMMEDIATELY. IS THERE A WAY I CAN STILL VOTE WITHOUT WAITING FOR MY VOTE BY MAIL BALLOT?	<p>Yes, any voter may vote between October 6 and November 4, at the Registrar-Recorder/County Clerk's Office in Norwalk. Since you will be unable to surrender your vote by mail ballot, you will be issued a "provisional" ballot, which will not be counted until it can be determined that you did not also vote by mail.</p>

	QUESTIONS	ANSWERS/AUTHORITY
8.	<p>HOW DO I VOTE MY BALLOT?</p> <p>MAY I APPLY AND VOTE AT THE ELECTIONS OFFICIALS' OFFICE?</p>	<p>Follow the instructions, which accompany your ballot provided by the elections official. Failure to complete your ballot correctly could jeopardize your vote. You will receive all the supplies necessary for the use and return of the ballot. (E.C. SEC. 3010)</p> <p>Yes, during regular business hours and on the two weekends prior to election day. Call the Vote By Mail Section at (562) 466-1323 for office hours or if you have any questions concerning your vote by mail ballot.</p>
9.	<p>DO I HAVE TO SIGN THE VOTE BY MAIL BALLOT RETURN ENVELOPE?</p>	<p>Yes. The signature is compared to the signature on your voter registration card before the ballot is counted to determine that you are the authorized voter. This is an important protection for you. To preserve the secrecy of your ballot, once the signature comparison is made, the ballot is separated from the envelope to prevent anyone from knowing how you voted. In this manner, the ballot becomes as anonymous and secret as any of the other ballots before they are counted. If, when you apply for a vote by mail ballot, you omit any of the required information from your application, the elections official will send you a ballot, but will also include a notice that the missing information must be provided in order for the ballot to be counted. (E.C. SECS. 3009, 3019)</p>
10.	<p>WHEN MUST I RETURN THE VOTED BALLOT?</p>	<p>In order to be counted, your ballot must be <u>received</u> by the elections official no later than the close of the polls on election day. The polls close in California at 8:00 p.m. You can mail it or bring it to the elections office or to any polling place within the county. Ballots received after close of polls cannot be counted regardless of postmarks. (E.C. SECS. 3017, 3020)</p> <p>If you return your voted ballot by mail, don't forget to put the required postage on the envelope. The post office cannot deliver it without the required postage.</p>
11.	<p>IF I LOSE THE VOTE BY MAIL BALLOT SENT TO ME, CAN I GET ANOTHER ONE?</p>	<p>Yes. However, you must sign a statement under penalty of perjury that you have lost or did not receive the first vote by mail ballot. The elections official maintains a record of each request, and provides a list of these requests to the polling place to ensure that each voter only casts one ballot. If you vote by mail twice, even if by mistake, neither ballot will be counted. (E.C. SECS. 3013, 3014)</p>
12.	<p>CAN I GIVE MY VOTED VOTE BY MAIL BALLOT TO SOMEONE ELSE TO RETURN FOR ME?</p>	<p>If you are ill, or have a physical disability, you may designate a relative (spouse, child, parent, grandparent, grandchild, brother, or sister) or any person residing in the same household as you to return your voted ballot for you following the instructions printed on the back of the return envelope. Your relative may return it in person to the elections official or to a polling place in your county, or may place it in the mail for return to the elections official. Contact your county elections official for more information. (E.C. SEC. 3017)</p>

	QUESTIONS	ANSWERS/AUTHORITY
13.	IF I REQUEST A VOTE BY MAIL BALLOT, CAN I CHANGE MY MIND AND STILL VOTE AT MY REGULAR POLLING PLACE?	<p>Yes, but you must bring your unvoted vote by mail ballot and give it to the polling place worker before voting a regular ballot. (E.C. SEC 3015)</p> <p>If you are unable to surrender your vote by mail ballot, however, you may still cast a "provisional" ballot at your polling place which will not be counted until it can be determined that you have not also voted by mail ballot. (E.C. SECS. 3016, 14310)</p>
REGISTRATION		
14.	WHAT ARE THE REQUIREMENTS TO REGISTER TO VOTE?	U.S. Citizen – Resident of California – 18 years of age at next election -- Not in prison or on parole for conviction of felony. (CA. CONST. ART. II, SEC 2, E.C. SECS. 321, 2101)
15.	<p>HOW LONG MUST A PERSON RESIDE IN CALIFORNIA TO BE ELIGIBLE TO REGISTER AND VOTE?</p> <p>NEW RESIDENTS & NEW CITIZENS</p>	<p>A person who has a residence in California, and intends to remain a resident is eligible to vote in California elections. (E.C. SEC. 349)</p> <p>To vote in an election an Affidavit of Registration must be executed and received by the election official at least 15 days before the election. A properly executed affidavit postmarked on or before the 15th day before an election and received by mail after the 15th day will be accepted. (E.C. SEC. 2102)</p> <p>A "new resident" who established residency in California after the 15th day before an election may vote for President and Vice President by registering to vote in the election official's office between the 14th day and 7th day before the presidential election. (E.C. SECS. 332, 3400)</p> <p>Persons who become citizens after the close of registration may register and vote at the Registrar of Voters office between the 14th and 7th day before an election. New citizens must present a Certificate of Naturalization and declare they have established residency in the county. (E.C. SECS. 331, 3500, 3501)</p>
16.	THE U.S. CONSTITUTION STATES THAT AS A CITIZEN I HAVE THE RIGHT TO VOTE. (AMEND'S 15, 19, 24, 26) WHY MUST I REGISTER?	The U.S. Constitution also delegates many powers to the States. California law requires an Affidavit of Registration unless a Superior Court has issued a judgment directing registration. (CA. CONST. ART. II, SEC. 3, E.C. SEC. 2100)
17.	MAY I REGISTER EVEN IF MY 18TH BIRTHDAY IS THE DAY AFTER THE ELECTION?	No. Must be <u>18</u> on or before the day of the election. (E.C. Sec. 2000, County Counsel Opinion)
18.	<p>DO I NEED TO PAY TO REGISTER TO VOTE?</p> <p>CAN A WORKER AT THE POLLING PLACE ASK ME TO TAKE ANY TESTS?</p>	<p>No fees may be charged for registration. (E.C. SEC. 2121)</p> <p>No.</p>

	QUESTIONS	ANSWERS/AUTHORITY
19.	MY HUSBAND IS OUT OF TOWN, MAY I REGISTER FOR HIM?	No. The signature of the registrant certifies the truthfulness and correctness of the affidavit, under penalty of perjury. (E.C. SECS. 2102, 2150)
20.	MAY I REGISTER TO VOTE IN L.A. COUNTY WHILE I AM TEMPORARILY IN ANOTHER COUNTY?	Yes. The other county would send the registration to L.A., just as we would if the situation were reversed. (E.C. SECS. 2113, 2114)
21.	WOULD LIKE TO REGISTER TO VOTE BUT I AM AN ACTOR AND DO NOT WANT MY ADDRESS MADE PUBLIC.	Under current state law, voter registrations are a matter of public record and must be disclosed on request. Specific voter registration information is however confidential. This includes the home address, telephone number, e-mail address, precinct number, California drivers license/identification number, social security number and any other unique identifier used for purposes of identification. Exception: This information is available to any candidate, specific committees and to any person using this information for election, scholarly, journalistic, political or governmental purposes. (GOV'T. CODE 6250 et seq. PUBLIC RECORDS ACT, 6254.4 and E.C. SEC. 2194)
22.	MY MOTHER IS DISABLED. MAY I SIGN THE AFFIDAVIT OF REGISTRATION FOR HER?	If unable to write she may make a mark or cross as a signature. You, then, may sign and date the affidavit below her signature or mark. (E.C. SEC. 2150) A signature stamp may also be used by an authorized user under specified conditions. (E.C. 354.5)
23.	MAY I REGISTER TO VOTE AT MY BUSINESS ADDRESS OR MAY I USE MY P.O. BOX NUMBER?	A person may only register to vote at his or her place of residence. A business address or P.O. Box number may only be used as a mailing address. (E.C. SECS. 349, 2020-2035)
24.	WHEN MUST A VOTER REGISTER?	The registration of a voter is permanent unless a person requests cancellation, is legally found mentally incompetent, imprisoned or on parole for conviction of a felony, dies, moves out of the precinct and/or county, wants to change party affiliation, is unknown at the registered address or has a Residency Confirmation (RCOP) postcard returned or other notification by the Postal Service as undeliverable. A voter must reregister if the voter registration has been canceled for any of the above reasons, and the voter is presently eligible. (E.C. SECS. 2200, 2201, 2222, 2224)
25.	WHEN IS IT ADVISABLE, BUT NOT MANDATORY TO REREGISTER?	If a voter has a change of surname (through marriage, etc.). (E.C. SEC. 2115) If a voter moves within the same election precinct. (E.C. SEC. 2204)
26.	MAY I SIGN A PETITION IF I AM NOT REGISTERED TO VOTE?	If you complete and sign an Affidavit of Registration on the same date or a date prior to signing the petition, and if the elections official receives the affidavit on or before the date the petition is filed, the signature will be validated. (E.C. SEC. 2102)

	QUESTIONS	ANSWERS/AUTHORITY
27.	<p>DO I NEED TO RE-REGISTER IF I MOVED, CHANGE MY NAME OR POLITICAL PARTY?</p> <p>FAIL SAFE VOTING</p> <p>I MOVED AFTER THE October 20 REGISTRATION DEADLINE. CAN I VOTE IN THIS ELECTION?</p>	<p>California law requires a voter to reregister if they move out of the precinct, change their name or wish to change their political party affiliation. (E.C. SECS. 2115, 2116, 2152, 2204)</p> <p>Under Federal and State election law provisions, voters who moved 15 days or more before an election and fail to notify the elections office of the address change may vote by provisional ballot at the polling place for the NEW residence address or at the Registrar-Recorder/County Clerks Office in Norwalk. (E.C. SEC. 14311)</p> <p>Voters, who moved between October 20 and November 4, may vote at the polling place for either the NEW or PRIOR residence address or at the Registrar-Recorder/County Clerks Office in Norwalk. Voters who have moved will be asked to vote by provisional ballot. Voter registration address information will be changed for future elections. (It is recommended voters be advised to vote at polling place for new address to provide necessary change of address information to update voter file.) (E.C. SECS. 2035, 14311)</p>
VOTING		
28.	<p>WHAT DO I DO IF MY POLLING PLACE IS NOT OPEN?</p>	<p>Check the address on the back of your sample ballot to make sure you have gone to the right place. Polling places often change. If you are at the right place, call the Registrar's Office at (562) 466-1373 to let them know the polling place is not open. (COUNTY REQUEST)</p>
29.	<p>IF I DON'T KNOW WHAT TO DO WHEN I GET TO MY POLLING PLACE, CAN SOMEONE THERE HELP ME?</p>	<p>Yes, the precinct board will help you. (E.C. SECS. 14272, 14282)</p>
30.	<p>CAN I TAKE MY SAMPLE BALLOT OR OWN WRITTEN LIST INTO THE VOTING BOOTH?</p>	<p>Yes. Deciding your votes before you go to the polling place will help in voting your ballot. (COUNTY RECOMMENDATION)</p>
31.	<p>CAN I VOTE FOR SOMEONE WHOSE NAME IS NOT ON THE BALLOT?</p>	<p>Yes, if the person is a qualified write-in candidate. Only votes for "qualified" write-in candidates will be counted. You may ask your precinct board member for a list of these candidates. You may vote for these candidates by writing their names and the office on the write-in portion of the ballot. If you don't know how to do this, ask your poll worker for help. (E.C. SECS. 15340-15342)</p>
32.	<p>I'VE LOST MY SAMPLE BALLOT AND DON'T KNOW WHERE I'M SUPPOSED TO GO VOTE.</p>	<p>You can access the Internet at lavote.net for ballot and/or polling place information. You may also call 1(800) 815-2666, (562) 466-1310, (562) 466-1323 for more information.</p>



2009 SCHEDULED ELECTIONS

(AS OF OCTOBER 1, 2008)

ELECTION DATE	JURISDICTIONS	CONTESTS ON BALLOT	ELECTION PROJECT CODE	RR/CC CONDUCTED ELECTION	CLOSE OF REGISTRATION
JANUARY 13	* SAN FERNANDO CITY SPECIAL RECALL	2 CNCL	1268		DECEMBER 29
FEBRUARY 24	BURBANK CITY PRIMARY NOMINATING AND BURBANK UNIFIED SCHOOL DISTRICT		0278		FEBRUARY 9
	GENERAL LAW & CHARTER CITIES		0288 (Overall No.)		
MARCH 3	ARTESIA CITY		0298		FEBRUARY 17***
MARCH 3	AZUSA CITY		0308		FEBRUARY 17
MARCH 3	BELL CITY		0318		FEBRUARY 17
MARCH 3	BELLFLOWER CITY		0328		FEBRUARY 17
MARCH 3	BEVERLY HILLS CITY		0338		FEBRUARY 17
MARCH 3	CALABASAS CITY		0348		FEBRUARY 17
MARCH 3	CARSON CITY		0358		FEBRUARY 17
MARCH 3	CERRITOS CITY		0368		FEBRUARY 17
MARCH 3	CLAREMONT CITY		0378		FEBRUARY 17
MARCH 3	COMMERCE CITY		0388		FEBRUARY 17
MARCH 3	COVINA CITY		0398		FEBRUARY 17
MARCH 3	CUDAHY CITY		0408		FEBRUARY 17
MARCH 3	GARDENA CITY		0418		FEBRUARY 17
MARCH 3	GLENORA CITY		0428		FEBRUARY 17
MARCH 3	HIDDEN HILLS CITY		0438		FEBRUARY 17
MARCH 3	HUNTINGTON PARK CITY		0448		FEBRUARY 17
MARCH 3	LA CANADA FLINTRIDGE CITY		0458		FEBRUARY 17
MARCH 3	LA HABRA HEIGHTS CITY		0468		FEBRUARY 17
MARCH 3	LAKWOOD CITY		0478		FEBRUARY 17
MARCH 3	LA MIRADA CITY		0488		FEBRUARY 17
MARCH 3	LA VERNE CITY		0498		FEBRUARY 17
MARCH 3	LOS ANGELES CITY PRIMARY NOMINATING, LOS ANGELES UNIFIED SCHOOL & LOS ANGELES COMMUNITY COLLEGE DISTRICTS		0508		FEBRUARY 17
MARCH 3	MANHATTAN BEACH CITY		0518		FEBRUARY 17
MARCH 3	MONTEREY PARK CITY		0538		FEBRUARY 17
MARCH 3	NORWALK CITY		0548		FEBRUARY 17
MARCH 3	PALOS VERDES ESTATES CITY		0558		FEBRUARY 17
MARCH 3	PARAMOUNT CITY		0568		FEBRUARY 17
MARCH 3	REDONDO BEACH CITY GENERAL MUNICIPAL AND REDONDO BEACH UNIFIED SCHOOL DISTRICT		0598		FEBRUARY 17
MARCH 3	ROLLING HILLS CITY		0608		FEBRUARY 17
MARCH 3	ROSEMEAD CITY		0618		FEBRUARY 17
MARCH 3	SAN DIMAS CITY		0628		FEBRUARY 17
MARCH 3	SAN FERNANDO CITY		0638		FEBRUARY 17
MARCH 3	SAN GABRIEL CITY		0648		FEBRUARY 17
MARCH 3	SAN MARINO CITY		0658		FEBRUARY 17

2009 SCHEDULED ELECTIONS (Continued)

ELECTION DATE	JURISDICTIONS	CONTESTS ON BALLOT	ELECTION PROJECT CODE	RR/CC CONDUCTED ELECTION	CLOSE OF REGISTRATION
	GENERAL LAW & CHARTER CITIES (Continued)		0288 (Overall No.)		
MARCH 3	SIGNAL HILL CITY		0668		FEBRUARY 17***
MARCH 3	SOUTH GATE CITY		0678		FEBRUARY 17
MARCH 3	TEMPLE CITY		0698		FEBRUARY 17
MARCH 3	WEST HOLLYWOOD CITY		0708		FEBRUARY 17
MARCH 10	PASADENA CITY PRIMARY NOMINATING AND PASADENA UNIFIED SCHOOL DISTRICT		0578		FEBRUARY 17
APRIL 7	GLENDALE CITY GENERAL MUNICIPAL, GLENDALE UNIFIED SCHOOL AND GLENDALE COMMUNITY COLLEGE DISTRICT		0718		MARCH 23
APRIL 7	INGLEWOOD CITY GENERAL MUNICIPAL AND INGLEWOOD UNIFIED SCHOOL DISTRICT		0728		MARCH 23
APRIL 14	BURBANK CITY GENERAL (RUNOFF)		0738		MARCH 30
APRIL 14	MONROVIA CITY		0528		MARCH 30
APRIL 21	ARCADIA UNIFIED SCHOOL DISTRICT BOARD OF EDUCATION Election Tally Type: Inka Vote System		0748	YES	APRIL 6
APRIL 21	COMPTON CITY PRIMARY NOMINATING		0758		APRIL 6
APRIL 21	PASADENA CITY GENERAL (RUNOFF)		0768		APRIL 6
MAY 12	REDONDO BEACH CITY GENERAL (RUNOFF)		0778		APRIL 27
MAY 19	LOS ANGELES CITY GENERAL (RUNOFF)		0798		MAY 4
JUNE 2	COMPTON CITY GENERAL (RUNOFF)		0808		MAY 18
JUNE 2	INDUSTRY CITY GENERAL MUNICIPAL		0818		MAY 18
JUNE 16	INGLEWOOD CITY GENERAL (RUNOFF)		0828		JUNE 1
NOVEMBER 3	CONCURRENT WITH CONSOLIDATED ELECTIONS				OCTOBER 19
	IRWINDALE CITY		1159		
	LOMITA CITY GENERAL MUNICIPAL		1269		
	WESTLAKE VILLAGE CITY GENERAL MUNICIPAL		1279		
NOVEMBER 3	CONSOLIDATED ELECTIONS Election Tally Type: InkaVote System		0019 (Overall No.)	YES	OCTOBER 19
	SCHOOL DISTRICTS				
	ABC Unified	3 GBM	0029		
	Acton-Agua Dulce Unified	3 GBM	0039		
	Antelope Valley Community College (Shared w/Kern County)	3 GBM	0049		
*	Antelope Valley Joint Union High (Shared w/Kern County)	3 GBM	1319		
	Azusa Unified	3 GBM	0059		
	Baldwin Park Unified	2 GBM	0069		
	Bassett Unified	3 GBM	0079		
	Bellflower Unified	3 GBM	0089		
	Beverly Hills Unified	2 GBM	0099		
	Bonita Unified	2 GBM	0109		
	Castaic Union	3 GBM	0119		
	Centinela Valley Union High [^] Trustee Areas 1, 2 & 5	3 BOT	0129		
	Cerritos Community College	3 GBM	0139		
	Charter Oak Unified	2 GBM	0149		
	Citrus Community College Trustee Areas 1 & 3	2 BOT	0159		
	Claremont Unified	3 GBM	0179		
	Compton Community College Trustee Areas 1 & 2	2 BOT	0169		
	Compton Unified	4 GBM	0189		

ELECTION DATE	JURISDICTIONS	CONTESTS ON BALLOT	ELECTION PROJECT CODE	RR/CC CONDUCTED ELECTION	CLOSE OF REGISTRATION
NOVEMBER 3	CONSOLIDATED ELECTIONS (Continued) Election Tally Type: InkaVote System		0019 (Overall No.)	YES	OCTOBER 19
	SCHOOL DISTRICTS (Continued)				
	Covina-Valley Unified	3 GBM	0199		
	Culver City Unified	3 GBM	0209		
	Downey Unified^ Trustee Areas 1, 5 & 7	3 BOT	0219		
	Duarte Unified	2 GBM	0229		
	East Whittier City	3 GBM	0239		
	Eastside Union	3 GBM	0249		
	El Camino Community College^ Trustee Areas 4 & 5	2 BOT	0259		
	El Monte City	3 GBM	0269		
	El Monte Union High	3 GBM	0279		
	El Rancho Unified	3 GBM	0289		
	El Segundo Unified	3 GBM	0299		
	Garvey	3 GBM	0309		
	Glendora Unified	3 GBM	0319		
	Gorman Joint (Shared w/Kern County)	1 GBM	0329		
	Hacienda La Puente Unified	3 GBM	0339		
	Hawthorne	3 GBM	0349		
	Hermosa Beach City	3 GBM	0359		
	Hughes-Elizabeth Lakes Union	3 GBM	0369		
	Keppel Union	3 GBM	0379		
	La Canada Unified	3 GBM	0389		
	Lancaster	3 GBM	0399		
	Las Virgenes Unified (Shared w/Ventura County)	3 GBM	0409		
	Lawndale	3 GBM	0419		
	Lennox	3 GBM	0429		
	Little Lake City	2 GBM	0439		
	Los Nietos	3 GBM	0449		
	Lynwood Unified	2 GBM	0459		
	Manhattan Beach Unified	3 GBM	0469		
	Monrovia Unified	2 GBM	0479		
	Montebello Unified	3 GBM	0489		
	Mountain View	3 GBM	0499		
	Mt. San Antonio Community College (Shared w/Orange County)	2 GBM	0519		
	Newhall	3 GBM	0529		
	Norwalk-La Mirada Unified	4 GBM	0539		
	Palmdale	3 GBM	0549		
	Palos Verdes Peninsula Unified	3 GBM	0559		
	Paramount Unified	3 GBM	0569		
	Pasadena Area Community College Trustee Areas 1, 3, 5 & 7	4 BOT	0579		
	Pomona Unified	3 GBM	0589		
	Rio Hondo Community College Trustee Areas 1, 3 & 5	3 BOT	0599		

2009 SCHEDULED ELECTIONS (Continued)

ELECTION DATE	JURISDICTIONS	CONTESTS ON BALLOT	ELECTION PROJECT CODE	RR/CC CONDUCTED ELECTION	CLOSE OF REGISTRATION
NOVEMBER 3	CONSOLIDATED ELECTIONS (Continued) Election Tally Type: InkaVote System		0019 (Overall No.)	YES	OCTOBER 19
	SCHOOL DISTRICTS (Continued)				
	Rosemead	3 GBM	0609		
	Rowland Unified (Shared w/ Orange County)	3 GBM	0619		
	San Gabriel Unified	3 GBM	0629		
	San Marino Unified	3 GBM	0639		
	Santa Clarita Community College** Office Nos. 1 & 3	2 BOT	0649		
	Saugus Union	3 GBM	0659		
	South Pasadena Unified	3 GBM	0669		
	South Whittier	3 GBM	0679		
	Sulphur Springs Union	3 GBM	0689		
	Temple City Unified	2 GBM	0699		
	Torrance Unified	3 GBM	0709		
	Valle Lindo	3 GBM	0719		
	Victor Valley Community College (Shared w/San Bernardino County)	3 GBM	0729		
	Walnut Valley Unified	3 GBM	0739		
	West Covina Unified	2 GBM	0749		
	Westside Union	3 GBM	0759		
	Whittier City	3 GBM	0769		
	Whittier Union High	3 GBM	0779		
	William S. Hart Union High	3 GBM	0789		
	Wilsona	3 GBM	0799		
	Wiseburn	3 GBM	0809		
	CALIFORNIA WATER DISTRICT				
	Walnut Valley Divisions 2 & 3	2 BOD	0819		
	COMMUNITY SERVICES DISTRICT				
	Point Dume	3 BOD	0829		
	COUNTY WATER DISTRICTS				
	Crescenta Valley	3 BOD	0839		
	Green Valley	3 BOD	0849		
	La Habra Heights	2 BOD	0859		
	La Puente Valley	3 BOD	0869		
	Newhall	3 BOD	0889		
	Orchard Dale Water	3 BOD	0899		
	Pico Water	3 BOD	0909		
	Quartz Hill Water	3 BOD	0919		
	Rowland Water Divisions 3, 4 & 5	3 BOD	0929		
	San Gabriel	3 BOD	0939		
	Sativa-Los Angeles	2 BOD	0949		
	Valley	3 BOD	0959		
	West Valley	2 BOD	0879		

2009 SCHEDULED ELECTIONS (Continued)

ELECTION DATE	JURISDICTIONS	CONTESTS ON BALLOT	ELECTION PROJECT CODE	RR/CC CONDUCTED ELECTION	CLOSE OF REGISTRATION
NOVEMBER 3	CONSOLIDATED ELECTIONS (Continued) Election Tally Type: InkaVote System		0019 (Overall No.)	YES	OCTOBER 19
	IRRIGATION DISTRICTS				
	Kinnetola Divisions 2 & 3	2 BOD	0969		
	La Canada Divisions 1 & 4	2 BOD	0979		
	Little Rock Creek	3 BOD	0989		
	Palm Ranch@ Divisions 2 & 4	2 BOD	0999		
	Palmdale Water@ Divisions 2 & 5	2 BOD	1009		
	South Montebello@ Divisions 1 & 2	2 BOD	1019		
	LIBRARY DISTRICTS				
	Altadena	2 BOD	1029		
	Palos Verdes	2 BOD	1039		
	RECREATION AND PARK DISTRICTS				
	Miraleste	2 BOD	1049		
	Ridgecrest Ranchos	3 BOD	1059		
	GENERAL AND SPECIAL MUNICIPAL ELECTIONS				
	Agoura Hills City		1069		
	Baldwin Park City		1079		
	Bell Gardens City		1089		
	Diamond Bar City		1099		
	Duarte City		1109		
	El Monte City		1119		
	Hawaiian Gardens City		1129		
	Hawthorne City		1139		
	Hermosa Beach City		1149		
	Irwindale City		1159		
	La Puente City		1169		
	Lynwood City		1179		
	Maywood City		1189		
	Montebello City		1199		
	Palmdale City		1209		
	Pico Rivera City		1289		
	Rancho Palos Verdes City		1219		
	Rolling Hills Estates City		1229		
	Santa Fe Springs City		1239		
	South El Monte City		1249		
	* South Pasadena City		1309		
	West Covina City		1259		

LEGEND

✦	Cities consenting election consolidations w/LACCD and/or LAUSD	GBM	-	Governing Board Member
*	Change/Addition	BOD	-	Board of Directors
@	Nominated by Division - Elected at Large	BOE	-	Board of Education
**	Nominated by Office - Elected at Large	BOT	-	Board of Trustees
^	Nominated by Trustee - Elected at Large	CNCL	-	Councilmember
***	Date adjusted for Weekend and/or holiday	CY ATTY	-	City Attorney
		CY CLK	-	City Clerk
		TREAS	-	Treasurer
		MEAS	-	Measure
		U/T	-	Unexpired Term
		IPND	-	Information Pending
		CNTRL	-	Controller
		MOA	-	Member of Assembly
		BOI	-	Board of Investments
		ALT	-	Alternate Member
		BOR	-	Board of Retirement



LOS ANGELES COUNTY BOARD OF SUPERVISORS

Yvonne B. Burke
Chairperson, Second District

Gloria Molina
First District

Zev Yaroslavsky
Third District

Don Knabe
Fourth District

Michael D. Antonovich
Fifth District

Dean C. Logan
Registrar-Recorder/County Clerk